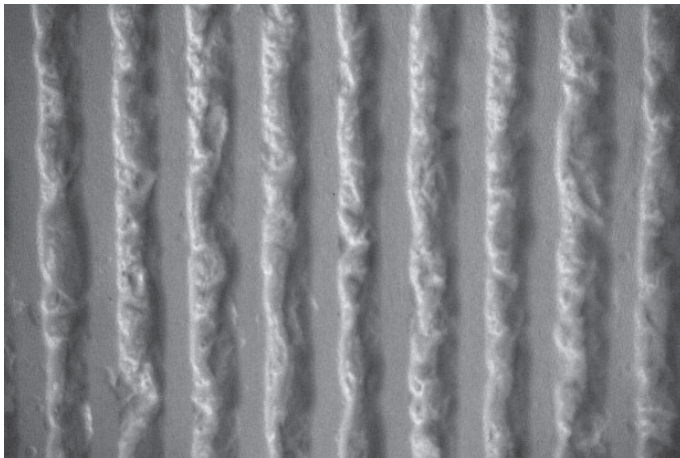
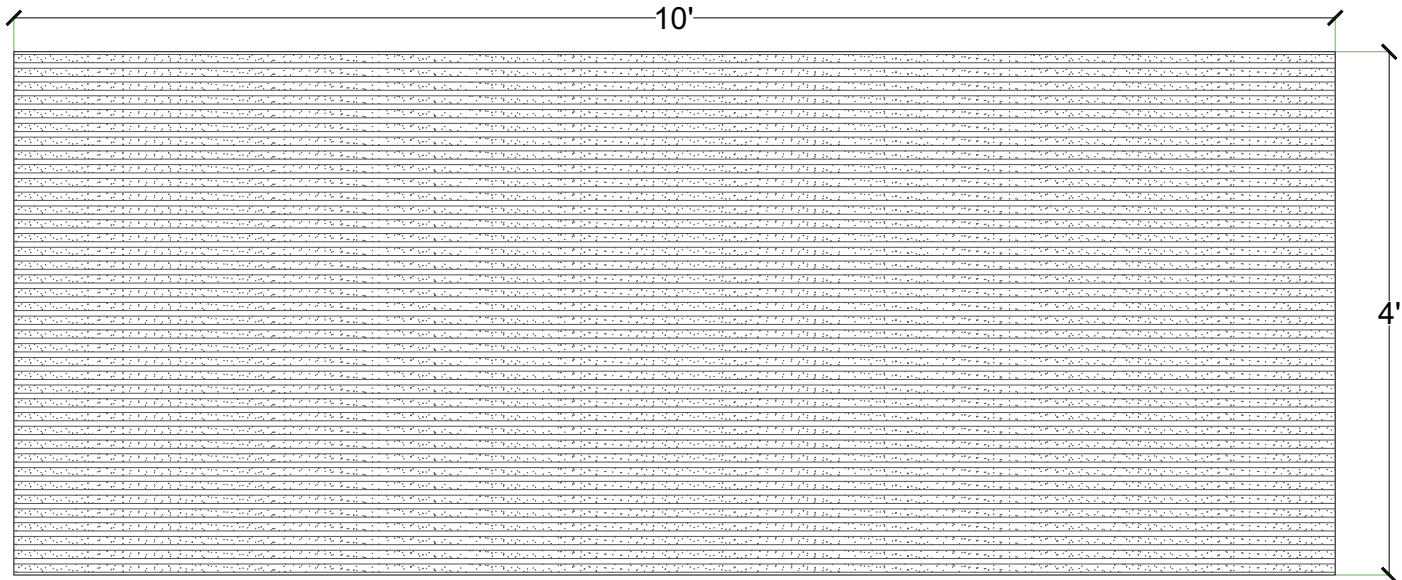
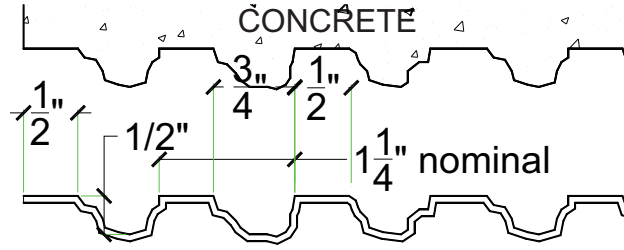


# Pattern# 3000

**1/2" Fractured Fin 1 1/4" OC nominal (1/2" Peak, 3/4" Rib)**

## General Information:

Thermoformed ABS and Styrene plastic formliners are an inexpensive alternative for providing architectural concrete. The Styrene single use liner is the least expensive liner option. The ABS plastic formliner properties allows for an up to ten reuse factor depending on the design and handling.



### Thermal Deformation:

- Do not expose to temperatures >140°F (60°C)

### Care and Handling:

- Keep out of the sunlight and covered when not in use
- Keep away from steam, acids, and certain fuels
- For further instructions refer to the application guide

### Thermal expansion:

- +/- 1/8" @ 70°F

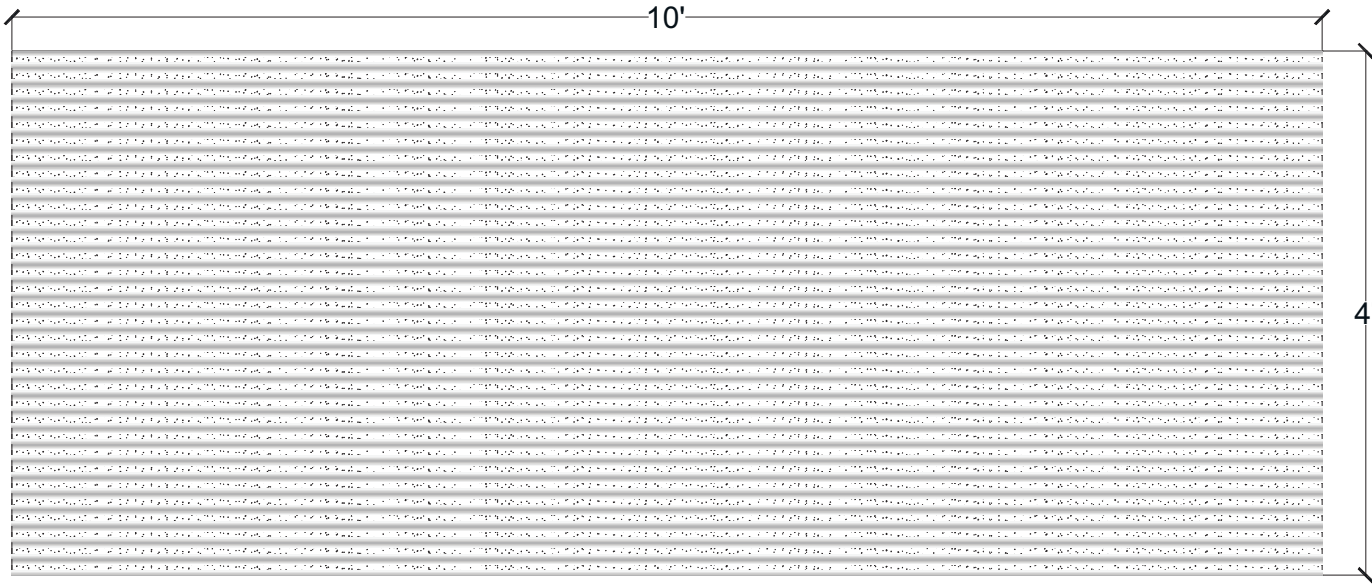
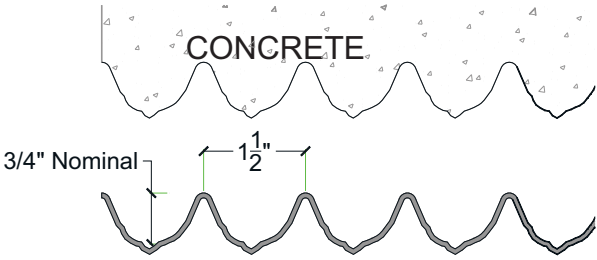
### Note:

Pattern may require additional backing. We recommend a mockup pour simulating job conditions.

Material	Product Code	# of Reuses	Std. Dims.	Color
Styrene	3000-STY	1	4'x10'	White
ABS	3000-ABS	Up to 10	4'x10'	Gray

### General Information:

Thermoformed ABS and Styrene plastic formliners are an inexpensive alternative for providing architectural concrete. The Styrene single use liner is the least expensive liner option. The ABS plastic formliner properties allows for an up to ten reuse factor depending on the design and handling.



### Thermal Deformation:

- Do not expose to temperatures >140°F (60°C)

### Care and Handling:

- Keep out of the sunlight and covered when not in use
- Keep away from steam, acids, and certain fuels
- For further instructions refer to the application guide

### Thermal expansion:

- +/- 1/8" @ 70°F

### Note:

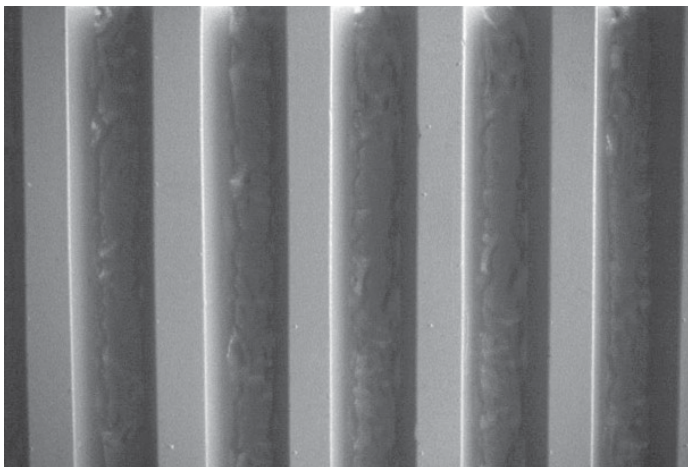
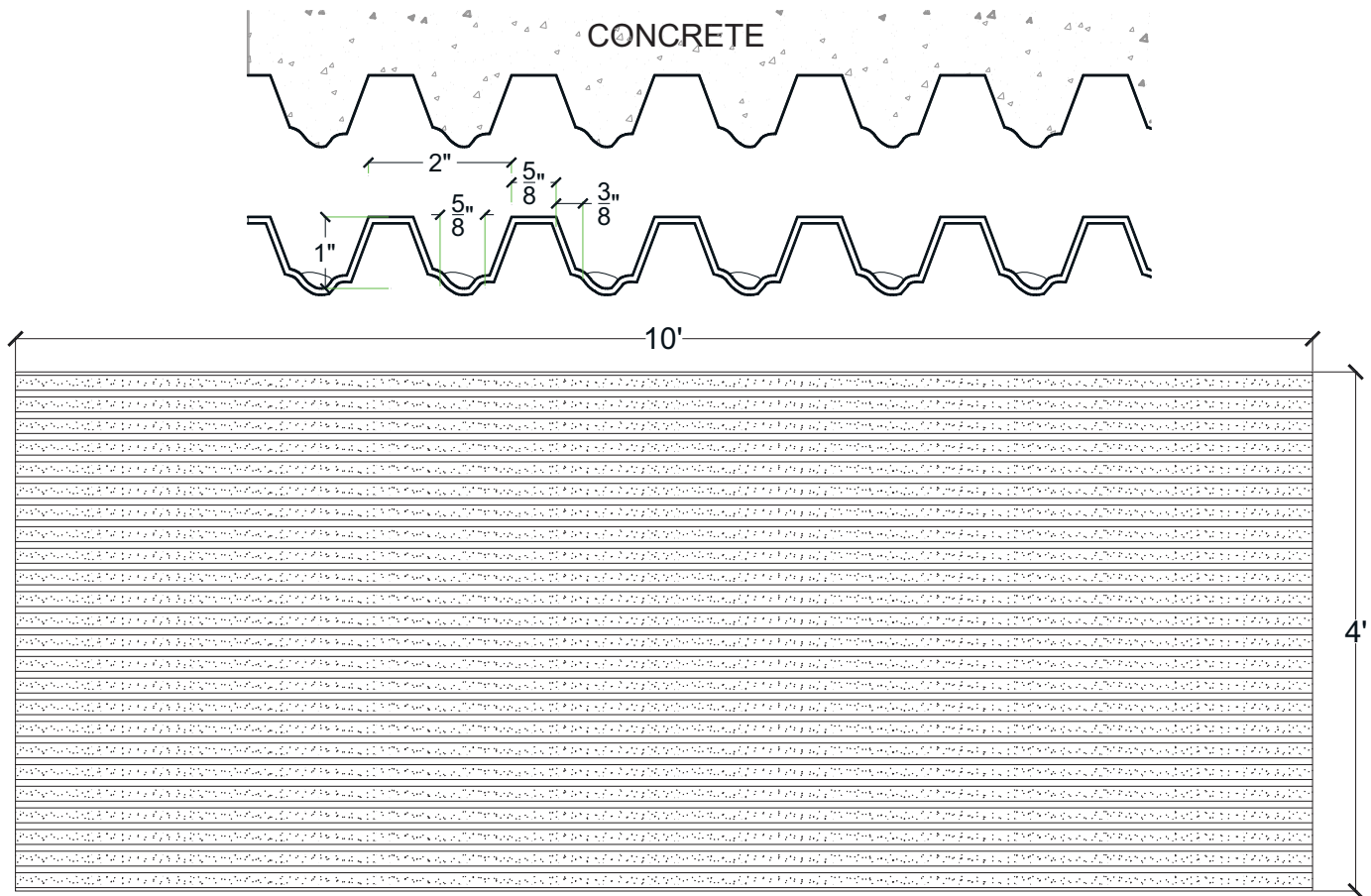
Pattern may require additional backing. We recommend a mockup pour simulating job conditions.

Material	Product Code	# of Reuses	Std. Dims.	Color
Styrene	3001-STY	1	4'x10'	White
ABS	3001-ABS	Up to 10	4'x10'	Gray

**1" Fractured Fin 2"oc (5/8" Peak, 1 3/8" Rib)**

**General Information:**

Thermoformed ABS and Styrene plastic formliners are an inexpensive alternative for providing architectural concrete. The Styrene single use liner is the least expensive liner option. The ABS plastic formliner properties allows for an up to ten reuse factor depending on the design and handling.



**Thermal Deformation:**

- Do not expose to temperatures >140°F (60°C)

**Care and Handling:**

- Keep out of the sunlight and covered when not in use
- Keep away from steam, acids, and certain fuels
- For further instructions refer to the application guide

**Thermal expansion:**

- +/- 1/8" @ 70°F

**Note:**

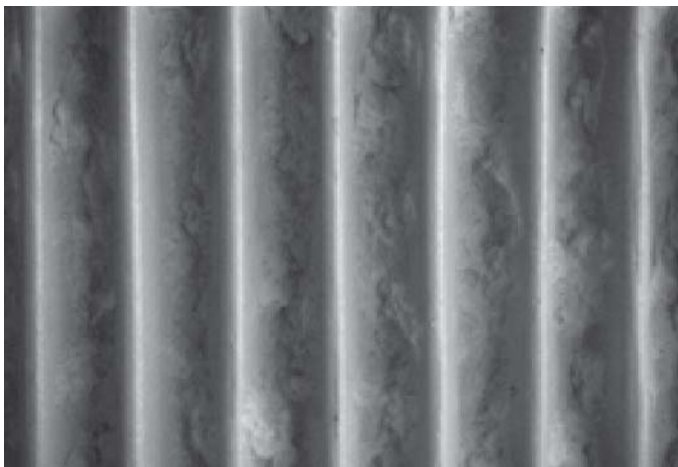
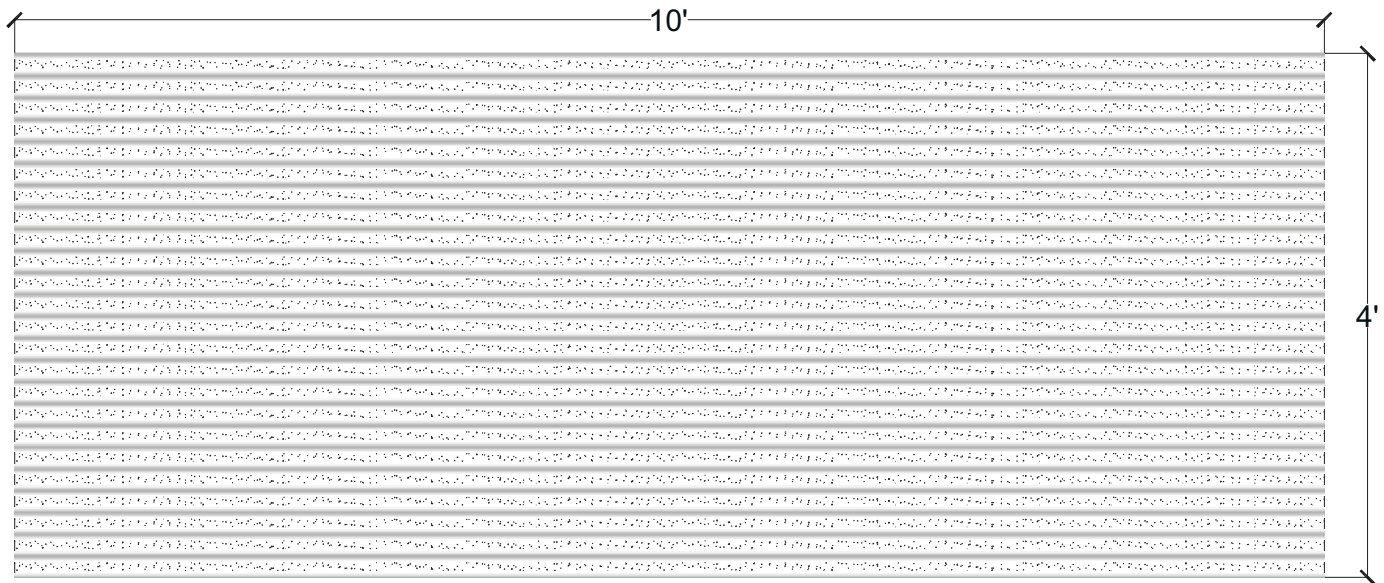
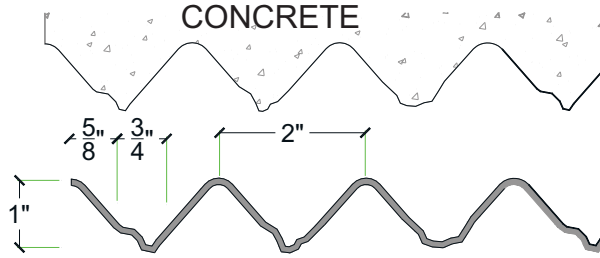
Pattern may require additional backing. We recommend a mockup pour simulating job conditions.

Material	Product Code	# of Reuses	Std. Dims.	Color
Styrene	3003-STY	1	4'x10'	White
ABS	3003-ABS	Up to 10	4'x10'	Gray

**1" Fractured Fin 2"oc (0" Peak, 2" Rib)**

**General Information:**

Thermoformed ABS and Styrene plastic formliners are an inexpensive alternative for providing architectural concrete. The Styrene single use liner is the least expensive liner option. The ABS plastic formliner properties allows for an up to ten reuse factor depending on the design and handling.



**Thermal Deformation:**

- Do not expose to temperatures >140°F (60°C)

**Care and Handling:**

- Keep out of the sunlight and covered when not in use
- Keep away from steam, acids, and certain fuels
- For further instructions refer to the application guide

**Thermal expansion:**

- +/- 1/8" @ 70°F

**Note:**

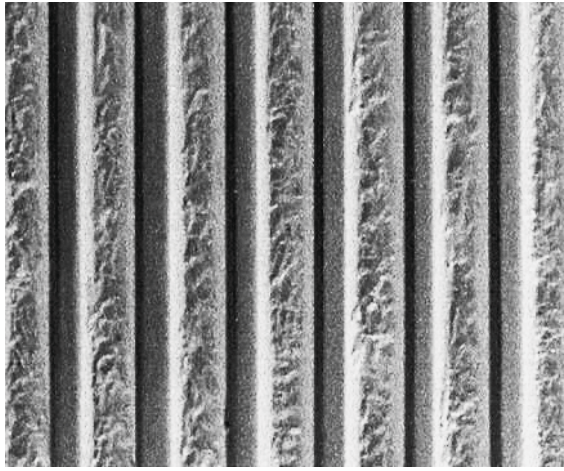
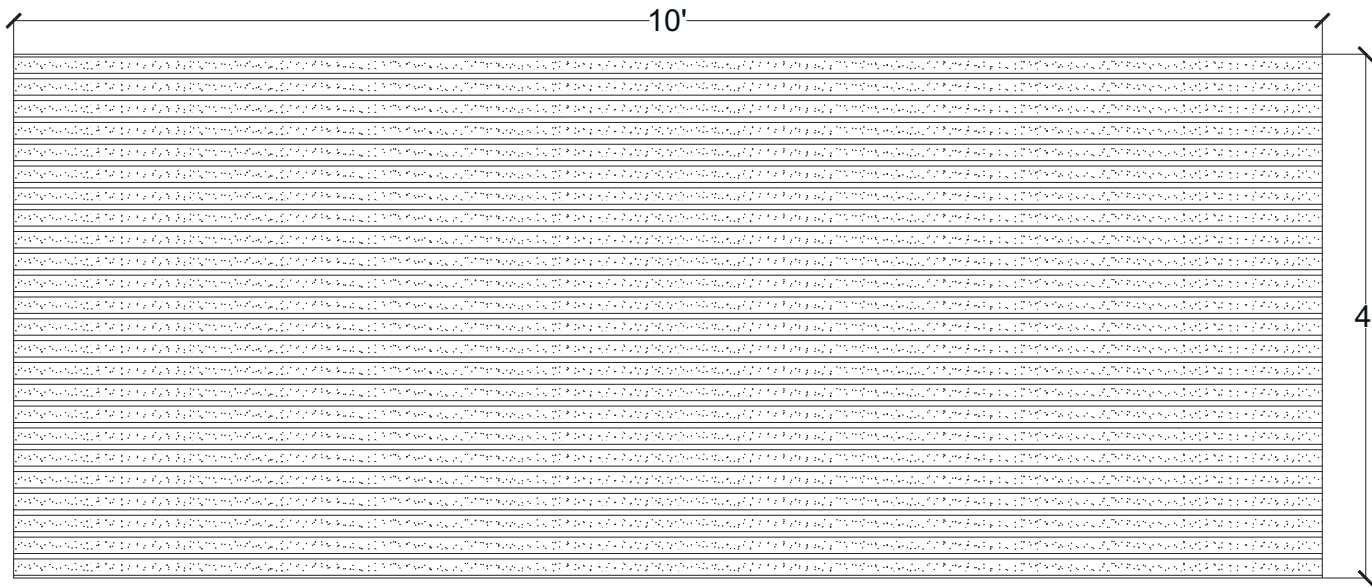
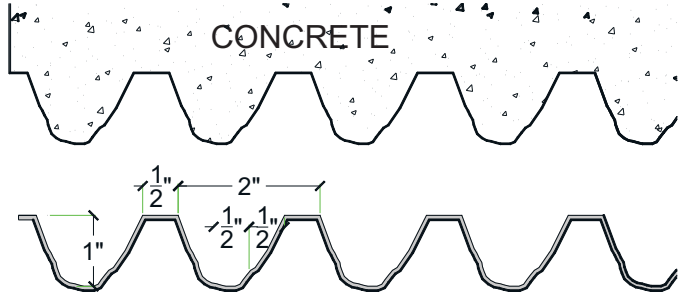
Pattern may require additional backing. We recommend a mockup pour simulating job conditions.

Material	Product Code	# of Reuses	Std. Dims.	Color
Styrene	3004-STY	1	4'x10'	White
ABS	3004-ABS	Up to 10	4'x10'	Gray



**General Information:**

Thermoformed ABS and Styrene plastic form liners are an inexpensive alternative for providing architectural concrete. The Styrene single use liner is the least expensive liner option. The ABS plastic form liner properties allows for an up to ten reuse factor depending on the design and handling.



**Thermal Deformation:**

- Do not expose to temperatures >140°F (60°C)

**Care and Handling:**

- Keep out of the sunlight and covered when not in use
- Keep away from steam, acids, and certain fuels
- For further instructions refer to the application guide

**Thermal expansion:**

- +/- 1/8" @ 70°F

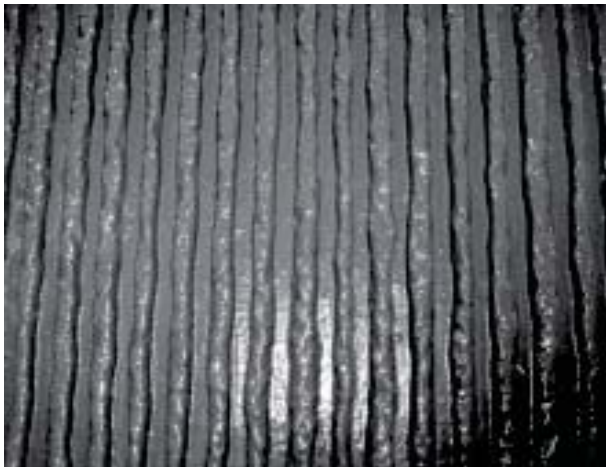
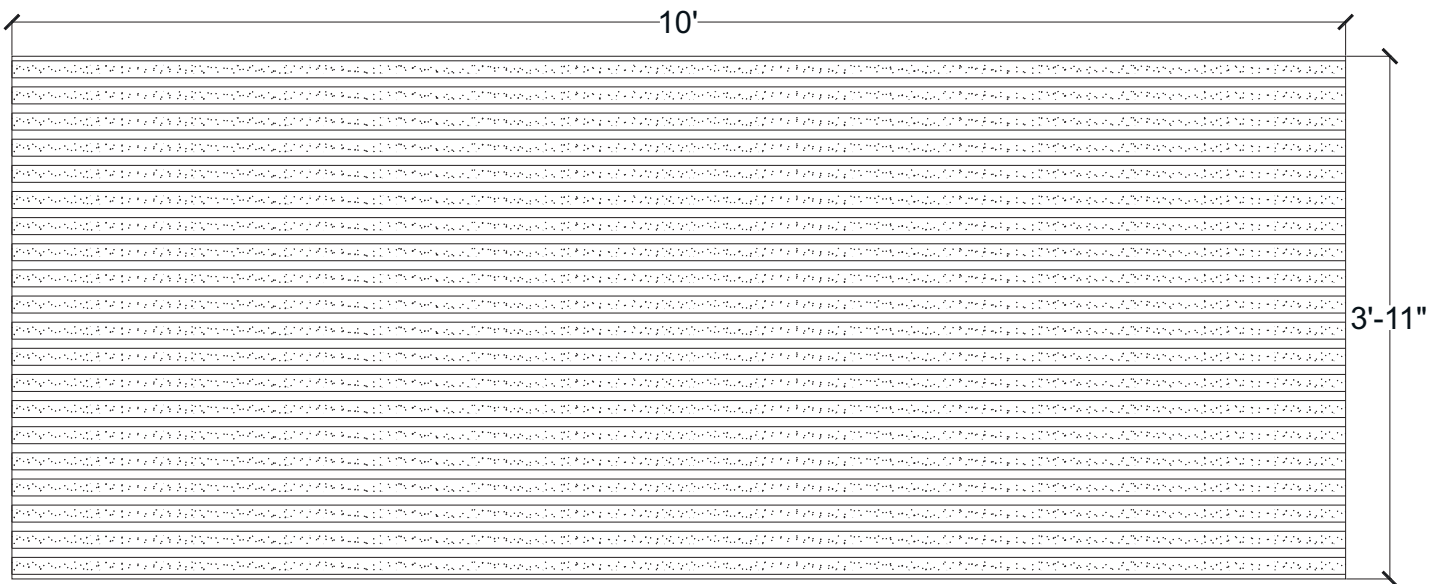
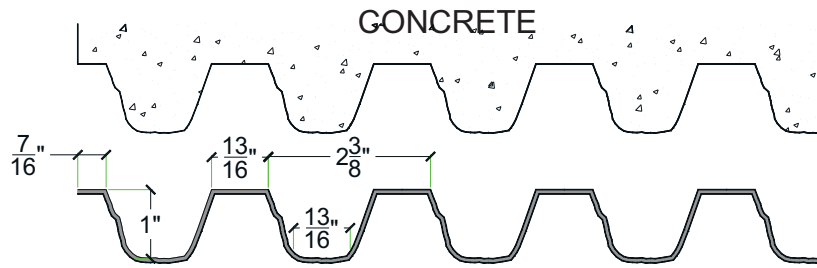
**Note:**

Pattern may require additional backing. We recommend a mockup pour simulating job conditions.

Material	Product Code	# of Reuses	Std. Dims.	Color
Styrene	3005-STY	1	4'x10'	White
ABS	3005-ABS	Up to 10	4'x10'	Gray

**General Information:**

Thermoformed ABS and Styrene plastic formliners are an inexpensive alternative for providing architectural concrete. The Styrene single use liner is the least expensive liner option. The ABS plastic formliner properties allows for an up to ten reuse factor depending on the design and handling.



**Thermal Deformation:**

- Do not expose to temperatures >140°F (60°C)

**Care and Handling:**

- Keep out of the sunlight and covered when not in use
- Keep away from steam, acids, and certain fuels
- For further instructions refer to the application guide

**Thermal expansion:**

- +/- 1/8" @ 70°F

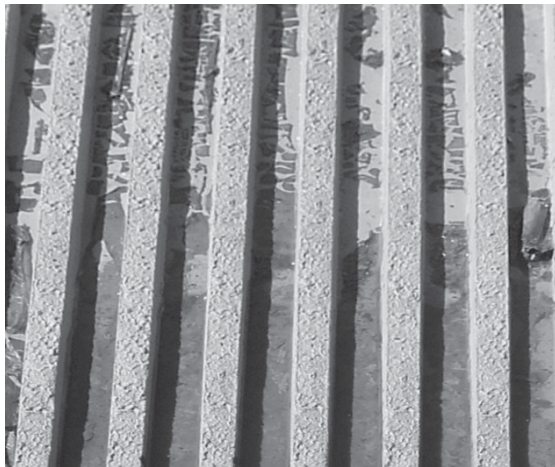
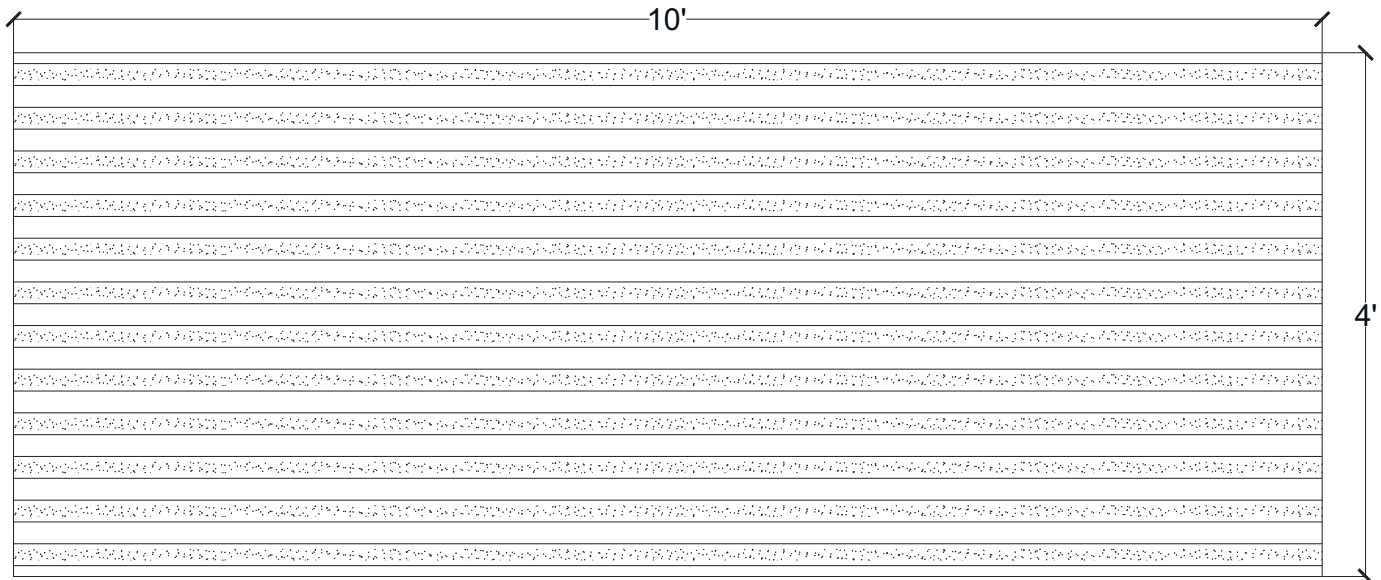
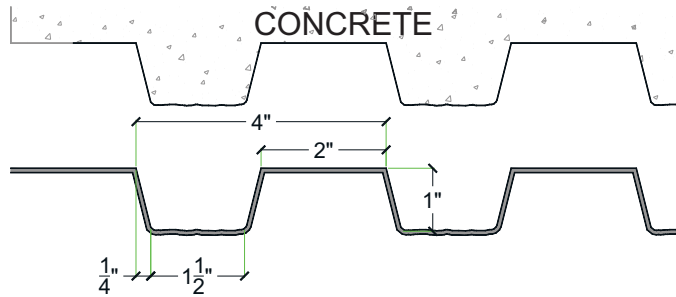
**Note:**

Pattern may require additional backing. We recommend a mockup pour simulating job conditions.

Material	Product Code	# of Reuses	Std. Dims.	Color
Styrene	3006-STY	1	3'-11"x10'	White
ABS	3006-ABS	Up to 10	3'-11"x10'	Gray

### General Information:

Thermoformed ABS and Styrene plastic formliners are an inexpensive alternative for providing architectural concrete. The Styrene single use liner is the least expensive liner option. The ABS plastic formliner properties allows for an up to ten reuse factor depending on the design and handling.



#### Thermal Deformation:

- Do not expose to temperatures >140°F (60°C)

#### Care and Handling:

- Keep out of the sunlight and covered when not in use
- Keep away from steam, acids, and certain fuels
- For further instructions refer to the application guide

#### Thermal expansion:

- +/- 1/8" @ 70°F

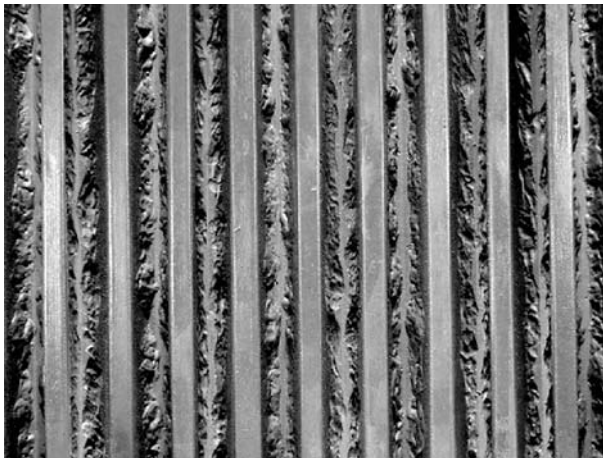
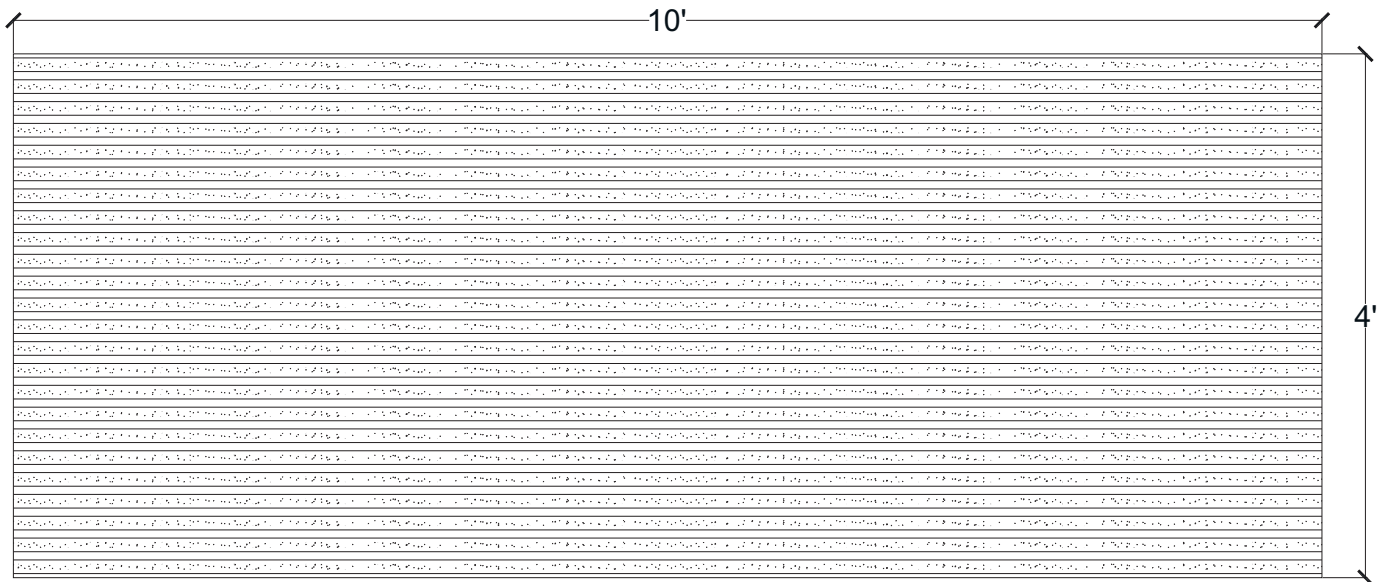
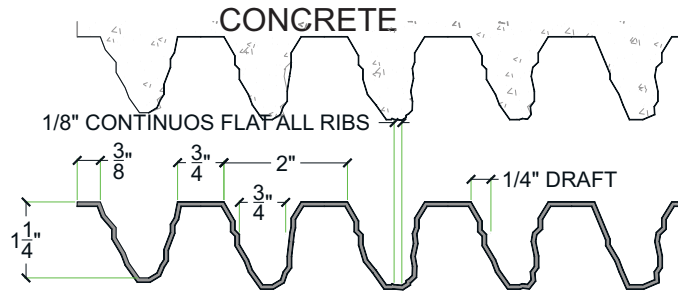
#### Note:

Pattern may require additional backing. We recommend a mockup pour simulating job conditions.

Material	Product Code	# of Reuses	Std. Dims.	Color
Styrene	3007-STY	1	4'x10'	White
ABS	3007-ABS	Up to 10	4'x10'	Gray

**General Information:**

Thermoformed ABS and Styrene plastic formliners are an inexpensive alternative for providing architectural concrete. The Styrene single use liner is the least expensive liner option. The ABS plastic formliner properties allows for an up to ten reuse factor depending on the design and handling.



**Thermal Deformation:**

- Do not expose to temperatures >140°F (60°C)

**Care and Handling:**

- Keep out of the sunlight and covered when not in use
- Keep away from steam, acids, and certain fuels
- For further instructions refer to the application guide

**Thermal expansion:**

- +/- 1/8" @ 70°F

**Note:**

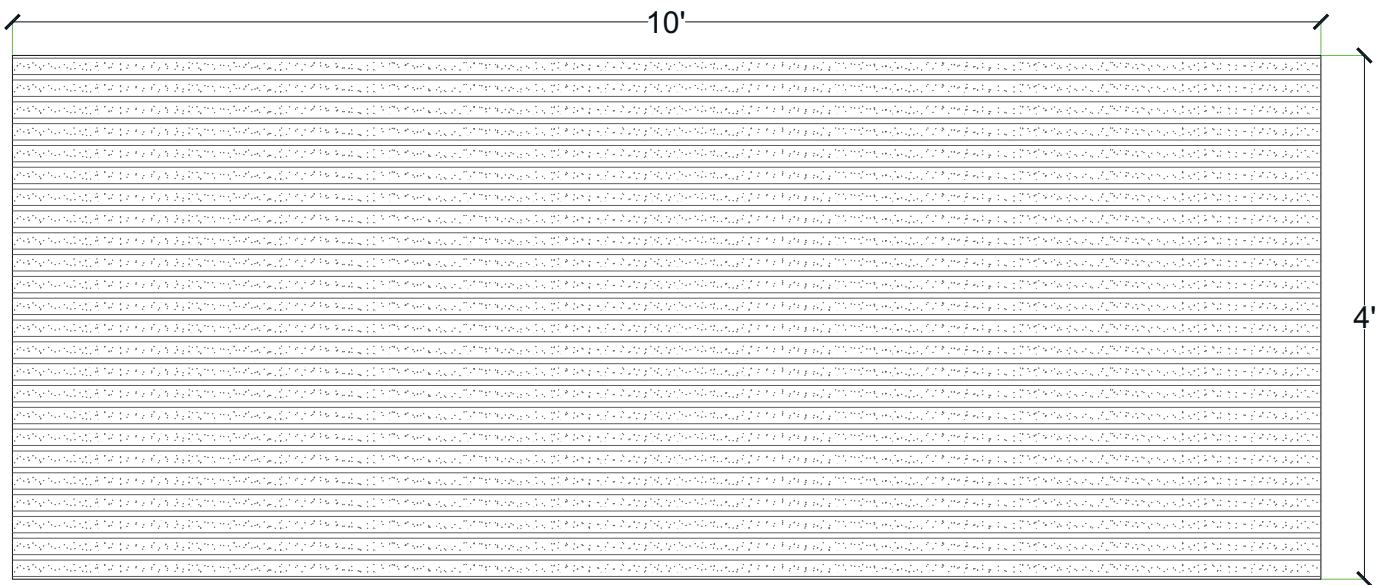
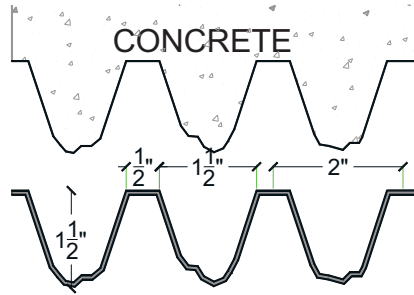
Pattern may require additional backing. We recommend a mockup pour simulating job conditions.

Material	Product Code	# of Reuses	Std. Dims.	Color
Styrene	3008-STY	1	4'x10'	White
ABS	3008-ABS	Up to 10	4'x10'	Gray



### General Information:

Thermoformed ABS and Styrene plastic formliners are an inexpensive alternative for providing architectural concrete. The Styrene single use liner is the least expensive liner option. The ABS plastic formliner properties allows for an up to ten reuse factor depending on the design and handling.



### Thermal Deformation:

- Do not expose to temperatures >140°F (60°C)

### Care and Handling:

- Keep out of the sunlight and covered when not in use
- Keep away from steam, acids, and certain fuels
- For further instructions refer to the application guide

### Thermal expansion:

- +/- 1/8" @ 70°F

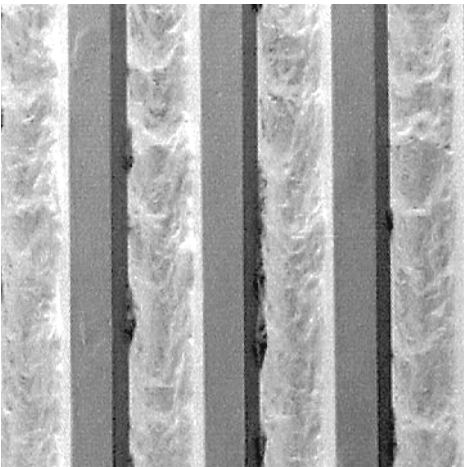
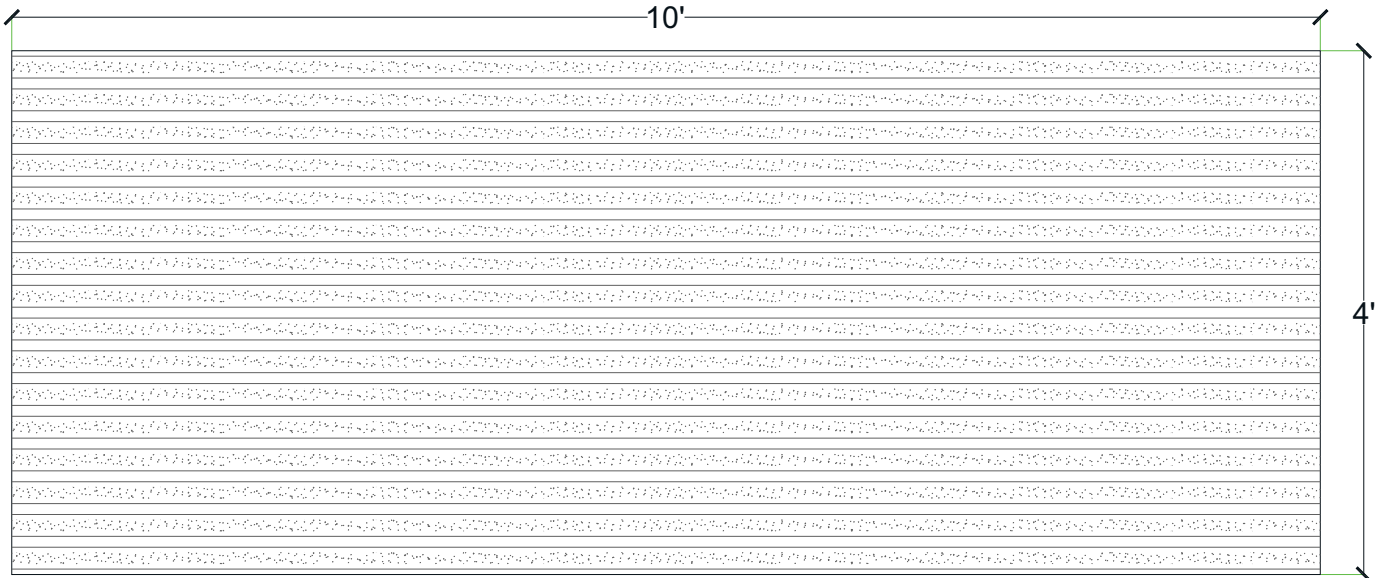
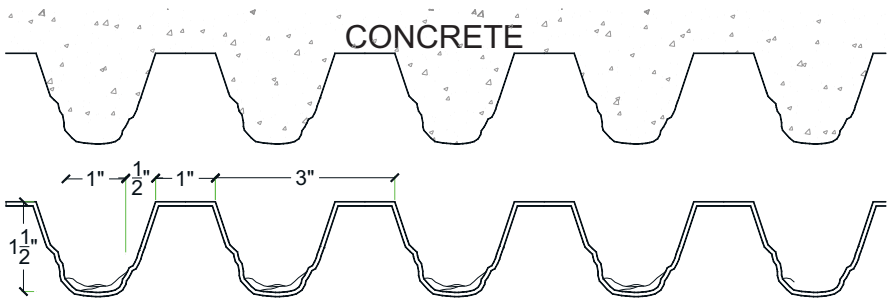
### Note:

Pattern may require additional backing. We recommend a mockup pour simulating job conditions.

Material	Product Code	# of Reuses	Std. Dims.	Color
Styrene	3011-STY	1	4'x10'	White
ABS	3011-ABS	Up to 10	4'x10'	Gray

**General Information:**

Thermoformed ABS and Styrene plastic formliners are an inexpensive alternative for providing architectural concrete. The Styrene single use liner is the least expensive liner option. The ABS plastic formliner properties allows for an up to ten reuse factor depending on the design and handling.



**Thermal Deformation:**

- Do not expose to temperatures >140°F (60°C)

**Care and Handling:**

- Keep out of the sunlight and covered when not in use
- Keep away from steam, acids, and certain fuels
- For further instructions refer to the application guide

**Thermal expansion:**

- +/- 1/8" @ 70°F

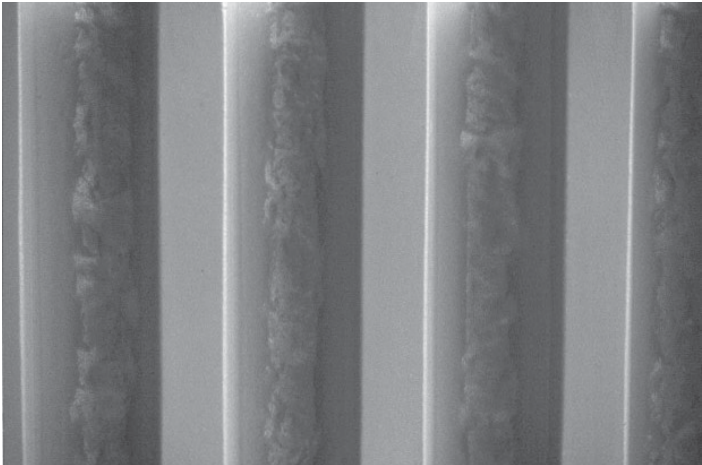
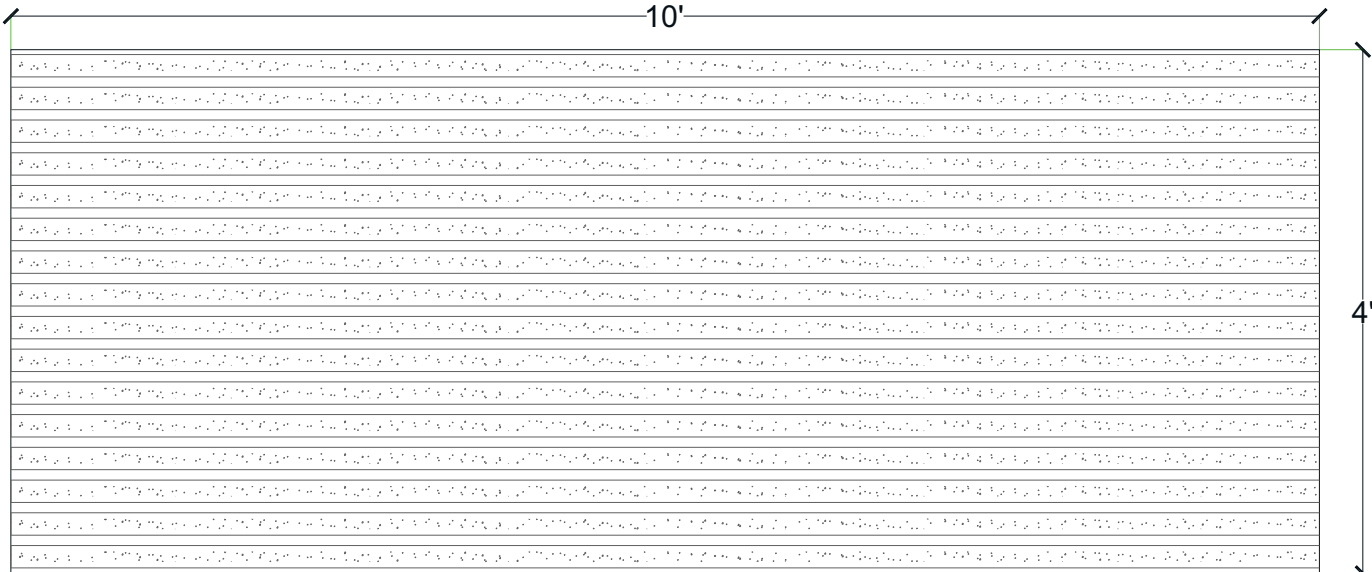
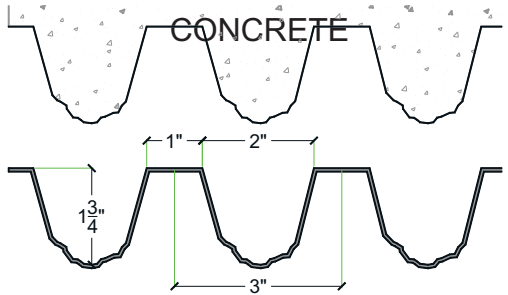
**Note:**

Pattern may require additional backing. We recommend a mockup pour simulating job conditions.

Material	Product Code	# of Reuses	Std. Dims.	Color
Styrene	3012-STY	1	4'x10'	White
ABS	3012-ABS	Up to 10	4'x10'	Gray

**General Information:**

Thermoformed ABS and Styrene plastic formliners are an inexpensive alternative for providing architectural concrete. The Styrene single use liner is the least expensive liner option. The ABS plastic formliner properties allows for an up to ten reuse factor depending on the design and handling.



**Thermal Deformation:**

- Do not expose to temperatures >140°F (60°C)

**Care and Handling:**

- Keep out of the sunlight and covered when not in use
- Keep away from steam, acids, and certain fuels
- For further instructions refer to the application guide

**Thermal expansion:**

- +/- 1/8" @ 70°F

**Note:**

Pattern may require additional backing. We recommend a mockup pour simulating job conditions.

Material	Product Code	# of Reuses	Std. Dims.	Color
Styrene	3014-STY	1	4'x10'	White
ABS	3014-ABS	Up to 10	4'x10'	Gray

# Pattern# 3015

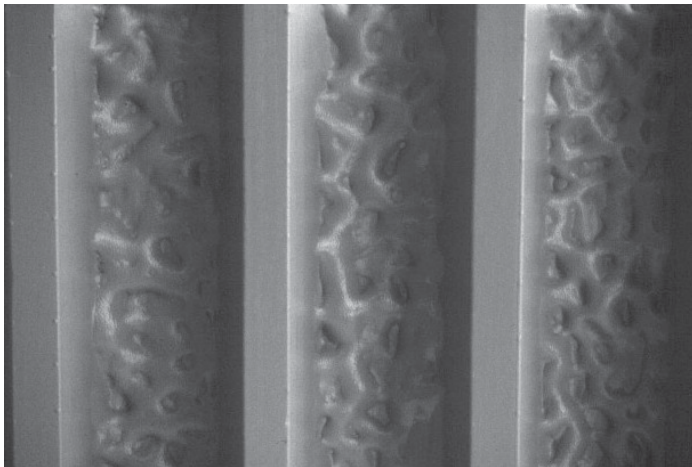
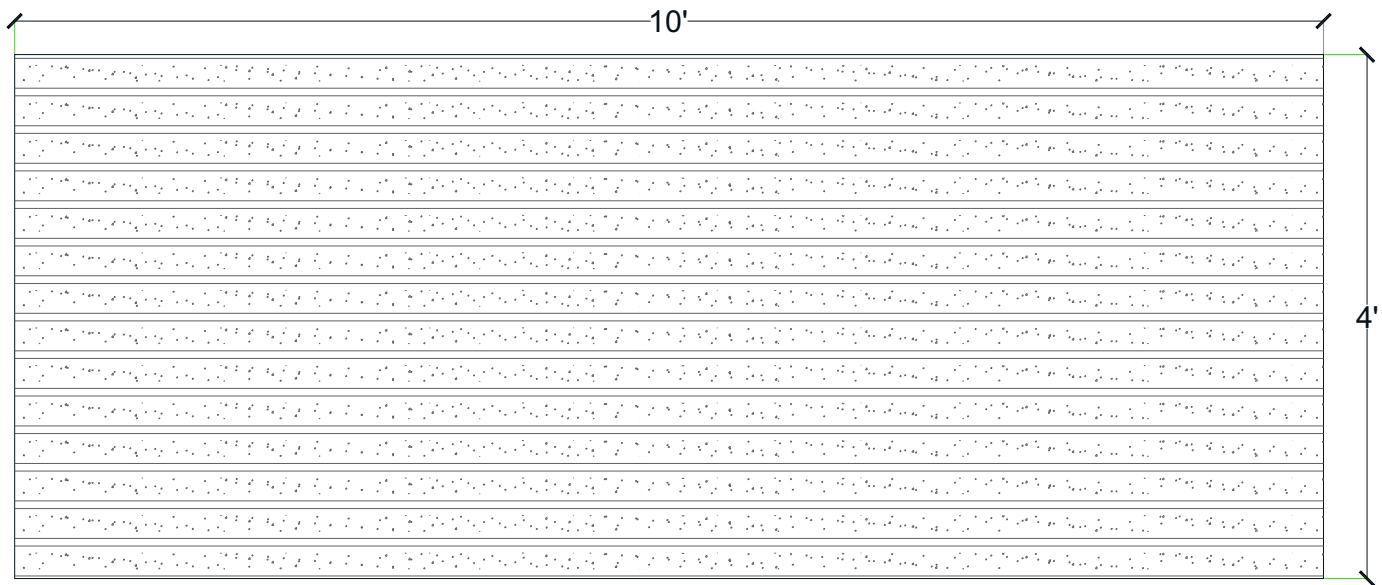
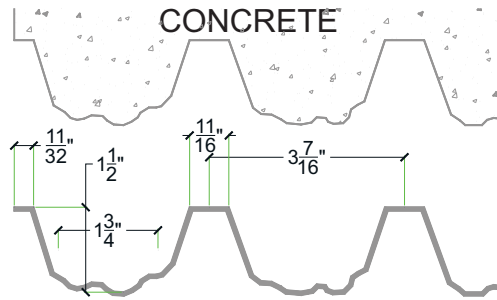
**customrock**

**1 1/2" Fractured Fin 3 7/16"oc (11/16" Peak, 2 3/4" Rib)**

FORMLINER

### General Information:

Thermoformed ABS and Styrene plastic formliners are an inexpensive alternative for providing architectural concrete. The Styrene single use liner is the least expensive liner option. The ABS plastic formliner properties allows for an up to ten reuse factor depending on the design and handling.



#### Thermal Deformation:

- Do not expose to temperatures >140°F (60°C)

#### Care and Handling:

- Keep out of the sunlight and covered when not in use
- Keep away from steam, acids, and certain fuels
- For further instructions refer to the application guide

#### Thermal expansion:

- +/- 1/8" @ 70°F

#### Note:

Pattern may require additional backing. We recommend a mockup pour simulating job conditions.

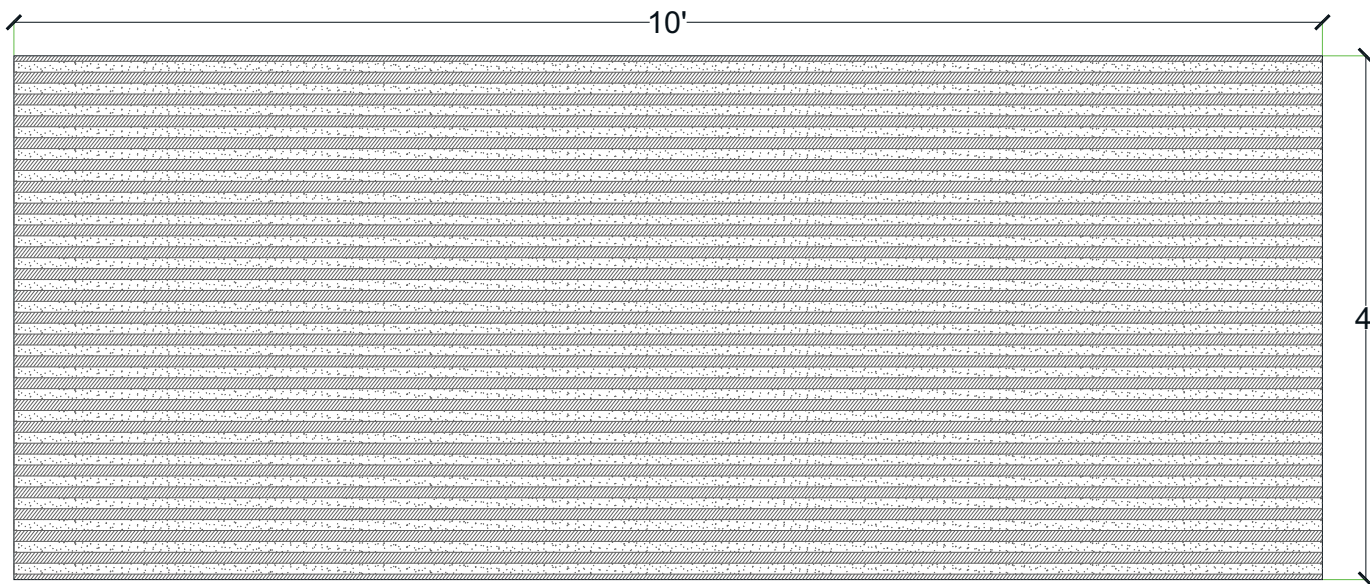
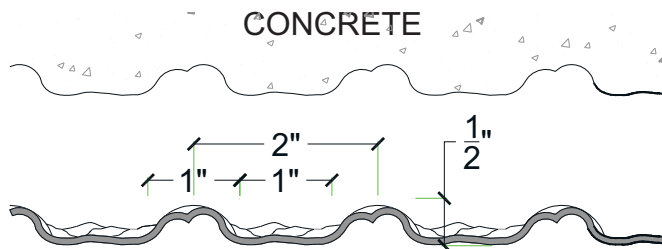
Material	Product Code	# of Reuses	Std. Dims.	Color
Styrene	3015-STY	1	4'x10'	White
ABS	3015-ABS	Up to 10	4'x10'	Gray



**1/2" Fractured Rope Rib 2"oc (1" Peak, 1" Rib)**

**General Information:**

Thermoformed ABS and Styrene plastic formliners are an inexpensive alternative for providing architectural concrete. The Styrene single use liner is the least expensive liner option. The ABS plastic formliner properties allows for an up to ten reuse factor depending on the design and handling.



**Thermal Deformation:**

- Do not expose to temperatures >140°F (60°C)

**Care and Handling:**

- Keep out of the sunlight and covered when not in use
- Keep away from steam, acids, and certain fuels
- For further instructions refer to the application guide

**Thermal expansion:**

- +/- 1/8" @ 70°F

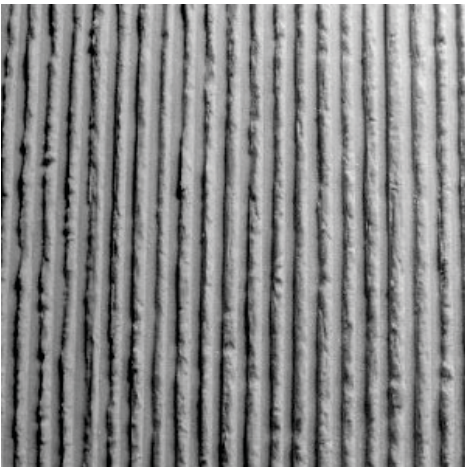
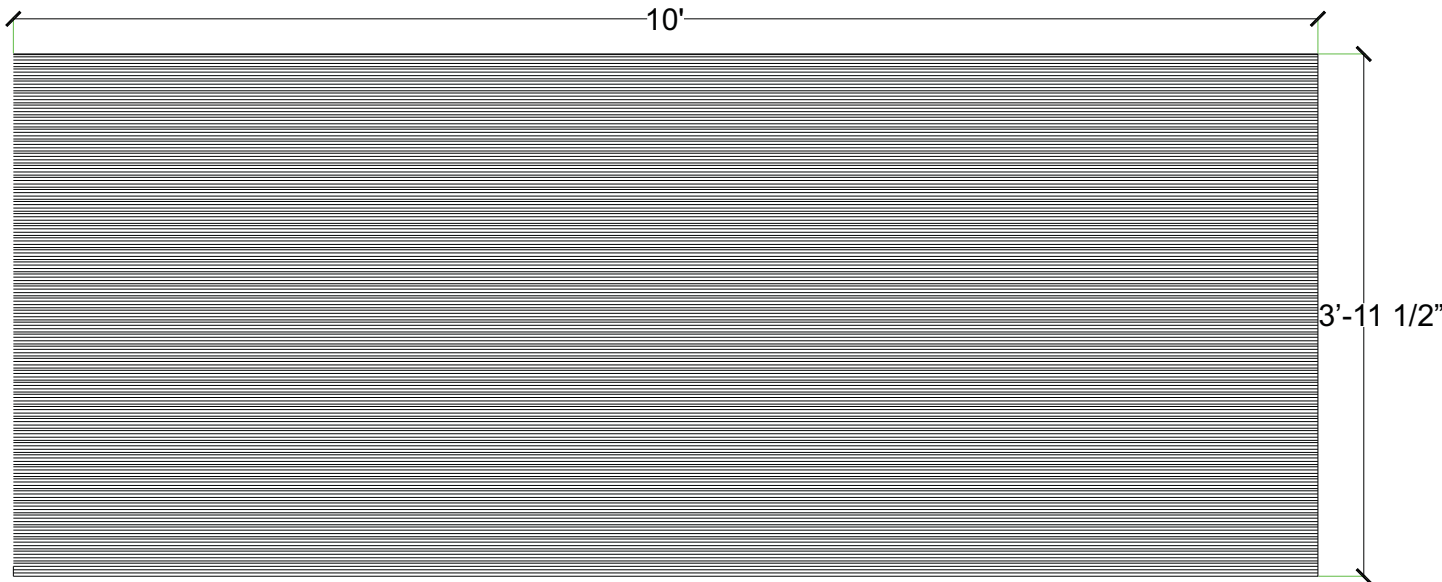
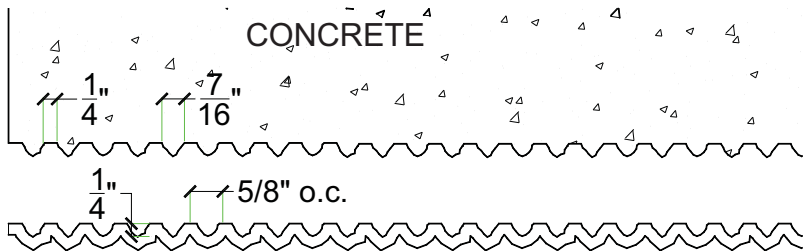
**Note:**

Pattern may require additional backing. We recommend a mockup pour simulating job conditions.

Material	Product Code	# of Reuses	Std. Dims.	Color
Styrene	3016-STY	1	4'x10'	White
ABS	3016-ABS	Up to 10	4'x10'	Gray

**General Information:**

Thermoformed ABS and Styrene plastic form liners are an inexpensive alternative for providing architectural concrete. The Styrene single use liner is the least expensive liner option. The ABS plastic form liner properties allows for an up to ten reuse factor depending on the design and handling.



**Thermal Deformation:**

- Do not expose to temperatures >140°F (60°C)

**Care and Handling:**

- Keep out of the sunlight and covered when not in use
- Keep away from steam, acids, and certain fuels
- For further instructions refer to the application guide

**Thermal expansion:**

- +/- 1/8" @ 70°F

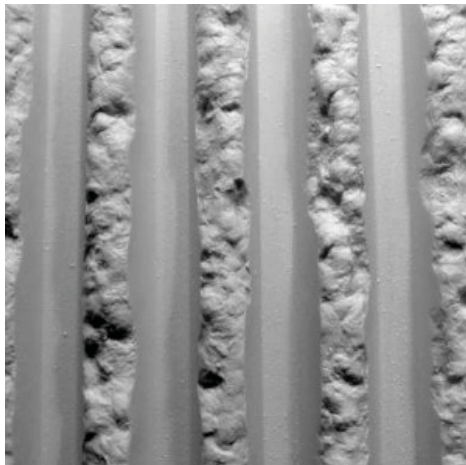
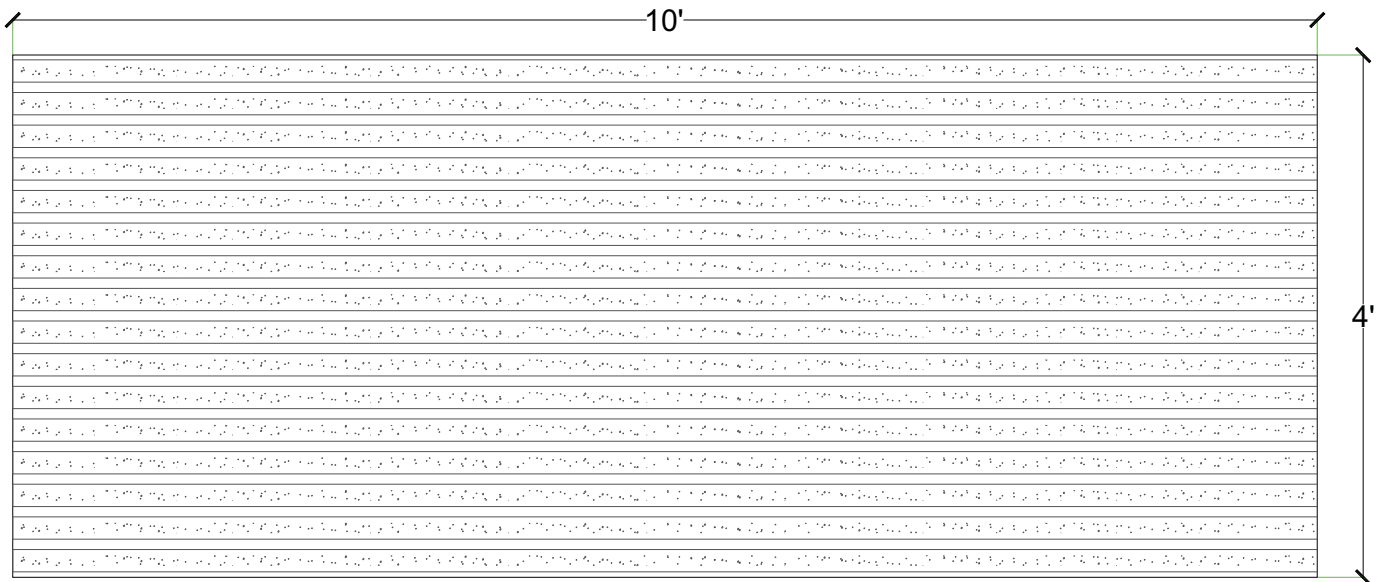
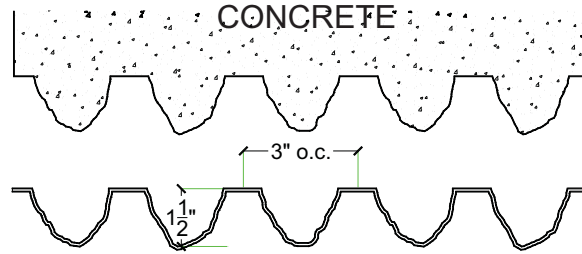
**Note:**

Pattern may require additional backing. We recommend a mockup pour simulating job conditions.

Material	Product Code	# of Reuses	Std. Dims.	Color
Styrene	3017-STY	1	3'-11 1/2"x10'	White
ABS	3017-ABS	Up to 10	3'-11 1/2"x10'	Gray

### General Information:

Thermoformed ABS and Styrene plastic formliners are an inexpensive alternative for providing architectural concrete. The Styrene single use liner is the least expensive liner option. The ABS plastic formliner properties allows for an up to ten reuse factor depending on the design and handling.



#### Thermal Deformation:

- Do not expose to temperatures >140°F (60°C)

#### Care and Handling:

- Keep out of the sunlight and covered when not in use
- Keep away from steam, acids, and certain fuels
- For further instructions refer to the application guide

#### Thermal expansion:

- +/- 1/8" @ 70°F

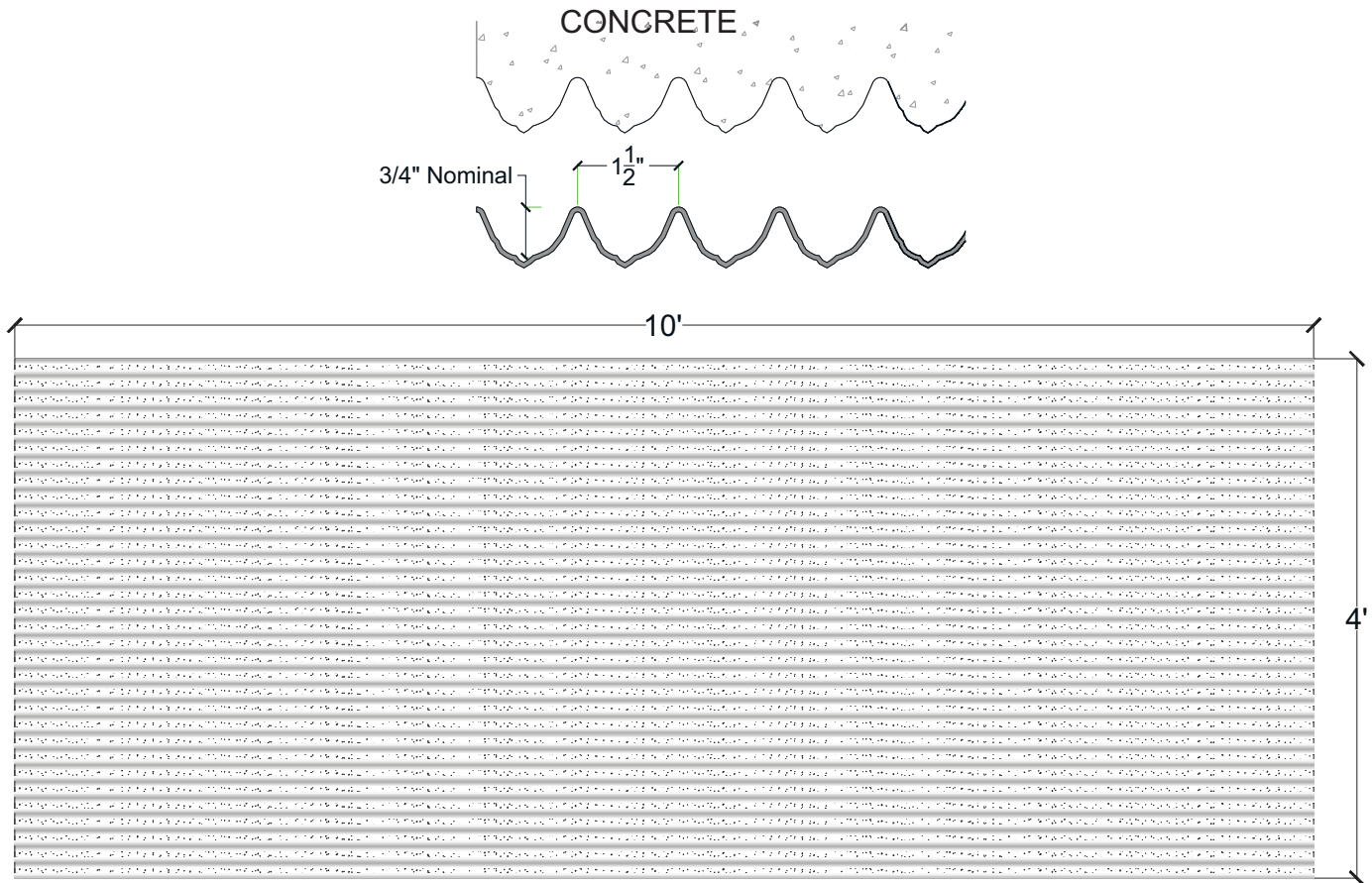
#### Note:

Pattern may require additional backing. We recommend a mockup pour simulating job conditions.

Material	Product Code	# of Reuses	Std. Dims.	Color
Styrene	3018-STY	1	4'x10'	White
ABS	3018-ABS	Up to 10	4'x10'	Gray

### General Information:

Thermoformed ABS and Styrene plastic formliners are an inexpensive alternative for providing architectural concrete. The Styrene single use liner is the least expensive liner option. The ABS plastic formliner properties allows for an up to ten reuse factor depending on the design and handling.



#### Thermal Deformation:

- Do not expose to temperatures >140°F (60°C)

#### Care and Handling:

- Keep out of the sunlight and covered when not in use
- Keep away from steam, acids, and certain fuels
- For further instructions refer to the application guide

#### Thermal expansion:

- +/- 1/8" @ 70°F

#### Note:

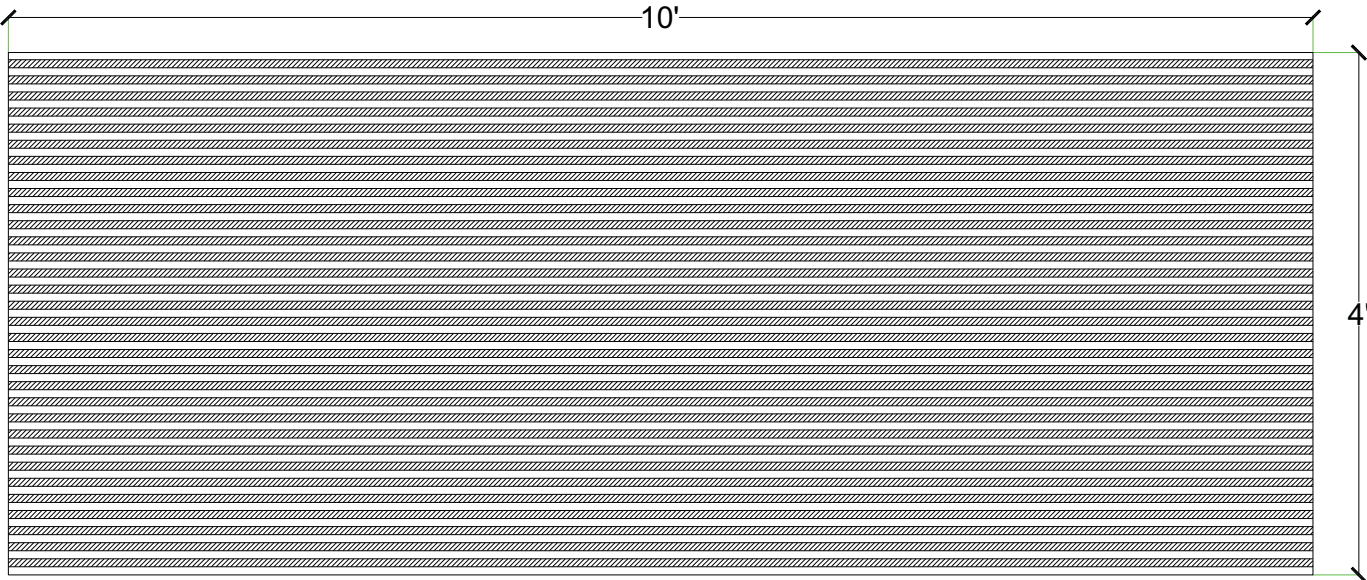
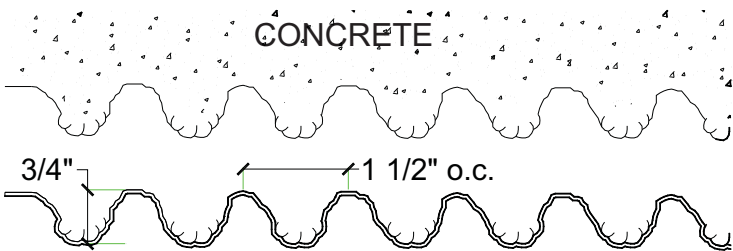
Pattern may require additional backing. We recommend a mockup pour simulating job conditions.

Material	Product Code	# of Reuses	Std. Dims.	Color
Styrene	3019-STY	1	4'x10'	White
ABS	3019-ABS	Up to 10	4'x10'	Gray



**General Information:**

Thermoformed ABS and Styrene plastic formliners are an inexpensive alternative for providing architectural concrete. The Styrene single use liner is the least expensive liner option. The ABS plastic formliner properties allows for an up to ten reuse factor depending on the design and handling.



**Thermal Deformation:**

- Do not expose to temperatures >140°F (60°C)

**Care and Handling:**

- Keep out of the sunlight and covered when not in use
- Keep away from steam, acids, and certain fuels
- For further instructions refer to the application guide

**Thermal expansion:**

- +/- 1/8" @ 70°F

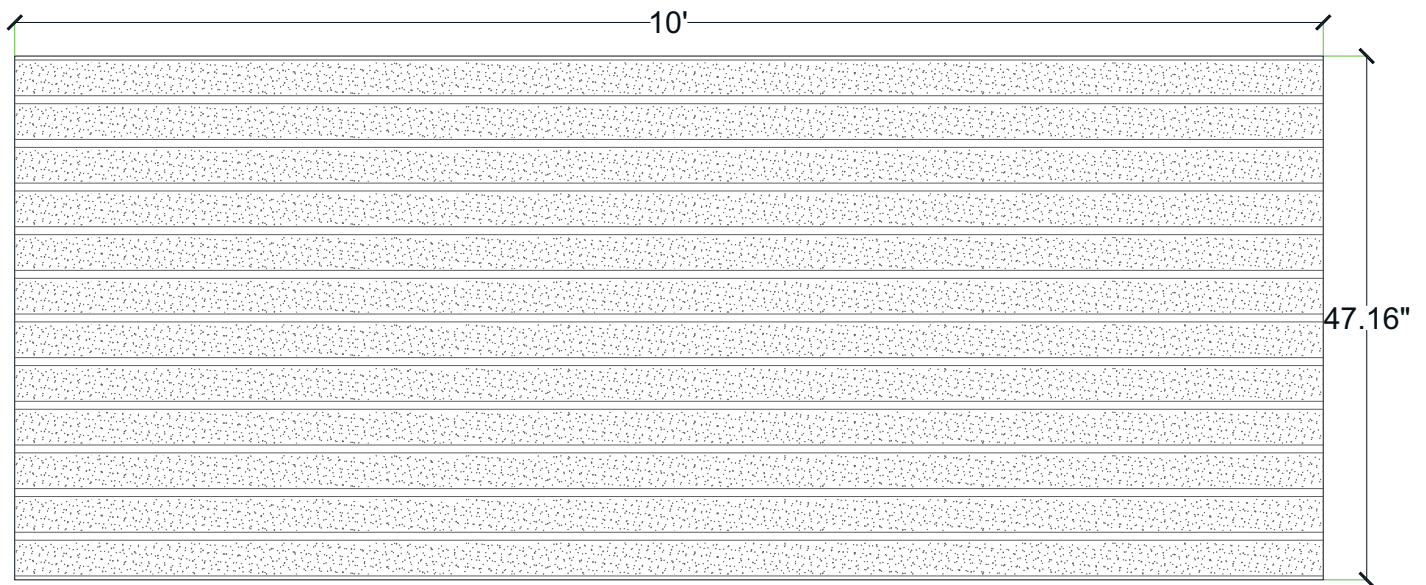
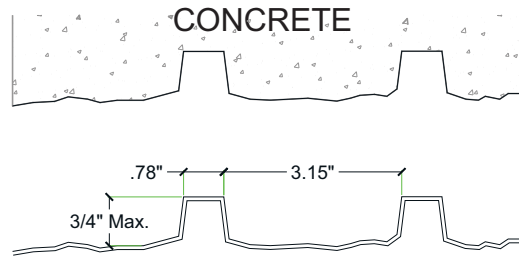
**Note:**

Pattern may require additional backing. We recommend a mockup pour simulating job conditions.

Material	Product Code	# of Reuses	Std. Dims.	Color
Styrene	3020-STY	1	4'x10'	White
ABS	3020-ABS	Up to 10	4'x10'	Gray

### General Information:

Thermoformed ABS and Styrene plastic formliners are an inexpensive alternative for providing architectural concrete. The Styrene single use liner is the least expensive liner option. The ABS plastic formliner properties allows for an up to ten reuse factor depending on the design and handling.



NO PICTURE AVAILABLE

#### Thermal Deformation:

- Do not expose to temperatures >140°F (60°C)

#### Care and Handling:

- Keep out of the sunlight and covered when not in use
- Keep away from steam, acids, and certain fuels
- For further instructions refer to the application guide

#### Thermal expansion:

- +/- 1/8" @ 70°F

#### Note:

Pattern may require additional backing. We recommend a mockup pour simulating job conditions.

Material	Product Code	# of Reuses	Std. Dims.	Color
Styrene	3022-STY	1	47.16"x10'	White
ABS	3022-ABS	Up to 10	47.16"x10'	Gray