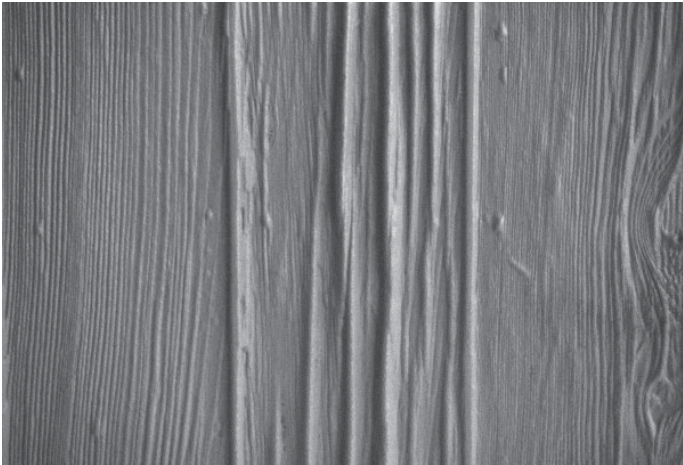
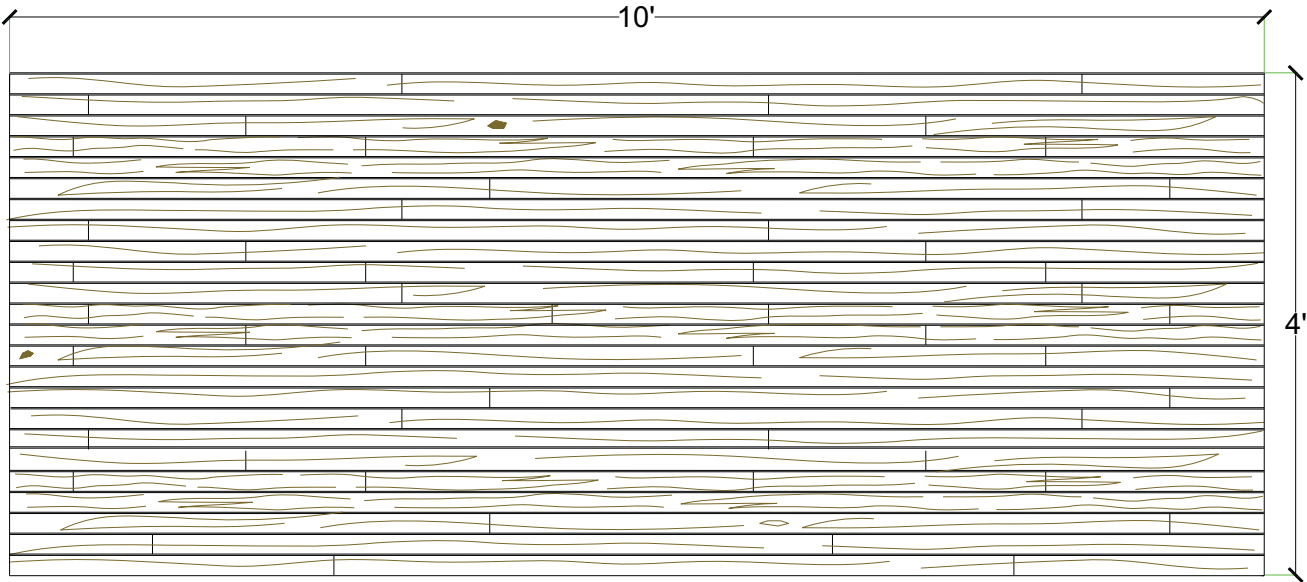
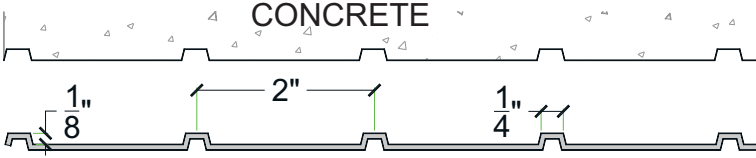


General Information:

Thermoformed ABS and Styrene plastic form liners are an inexpensive alternative for providing architectural concrete. The Styrene single use liner is the least expensive liner option. The ABS plastic form liner properties allows for an up to ten reuse factor depending on the design and handling.



Thermal Deformation:

- Do not expose to temperatures >140°F (60°C)

Care and Handling:

- Keep out of the sunlight and covered when not in use
- Keep away from steam, acids, and certain fuels
- For further instructions refer to the application guide

Thermal expansion:

- +/- 1/8" @ 70°F

Note:

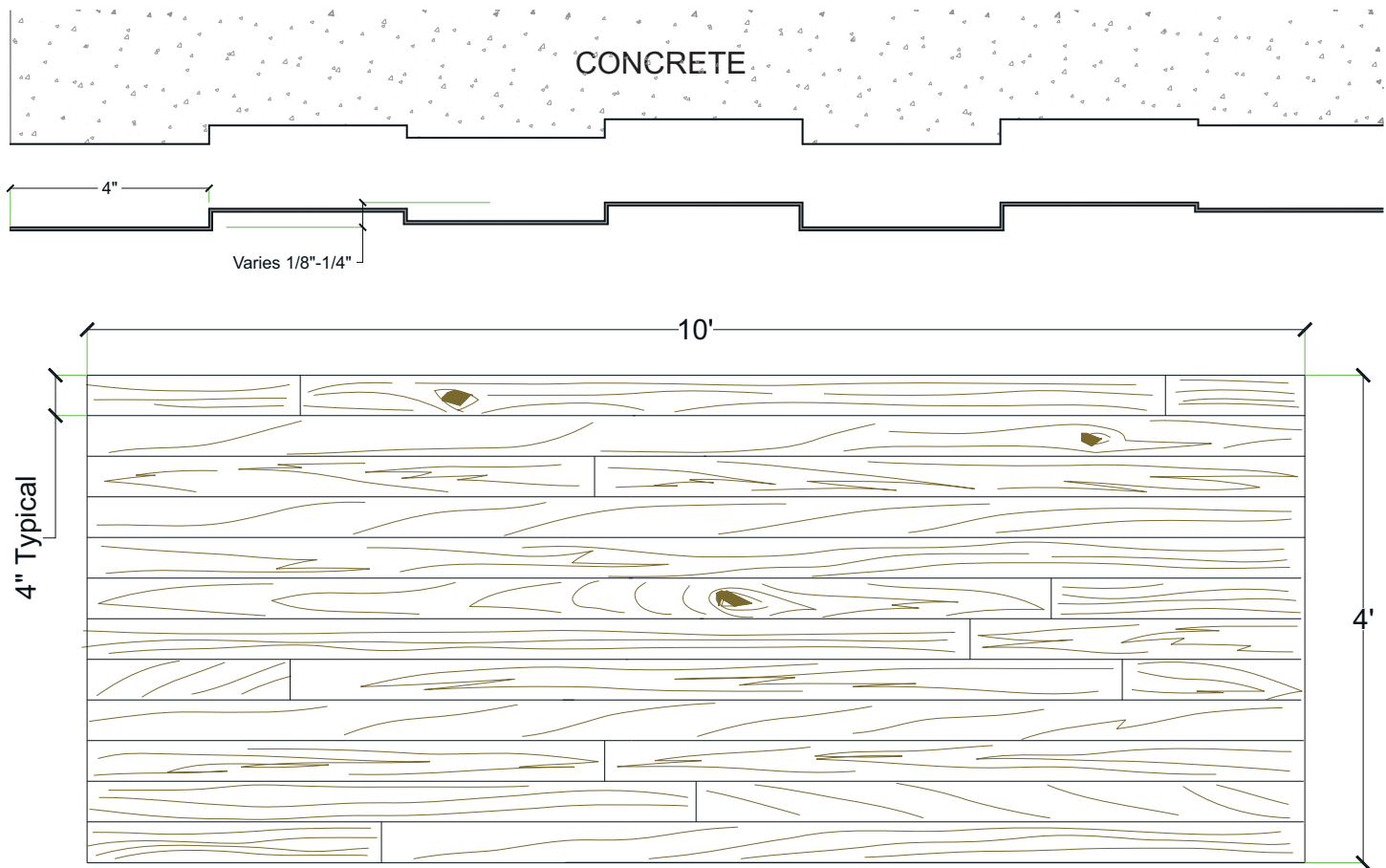
Pattern may require additional backing. We recommend a mockup pour simulating job conditions.

Material	Product Code	# of Reuses	Std. Dims.	Color
Styrene	6001-STY	1	4'x10'	White
ABS	6001-ABS	Up to 10	4'x10'	Gray

4" Wide Plank Variable Depth Cedar

General Information:

Thermoformed ABS and Styrene plastic formliners are an inexpensive alternative for providing architectural concrete. The Styrene single use liner is the least expensive liner option. The ABS plastic formliner properties allows for an up to ten reuse factor depending on the design and handling.



Thermal Deformation:

- Do not expose to temperatures >140°F (60°C)

Care and Handling:

- Keep out of the sunlight and covered when not in use
- Keep away from steam, acids, and certain fuels
- For further instructions refer to the application guide

Thermal expansion:

- +/- 1/8" @ 70°F

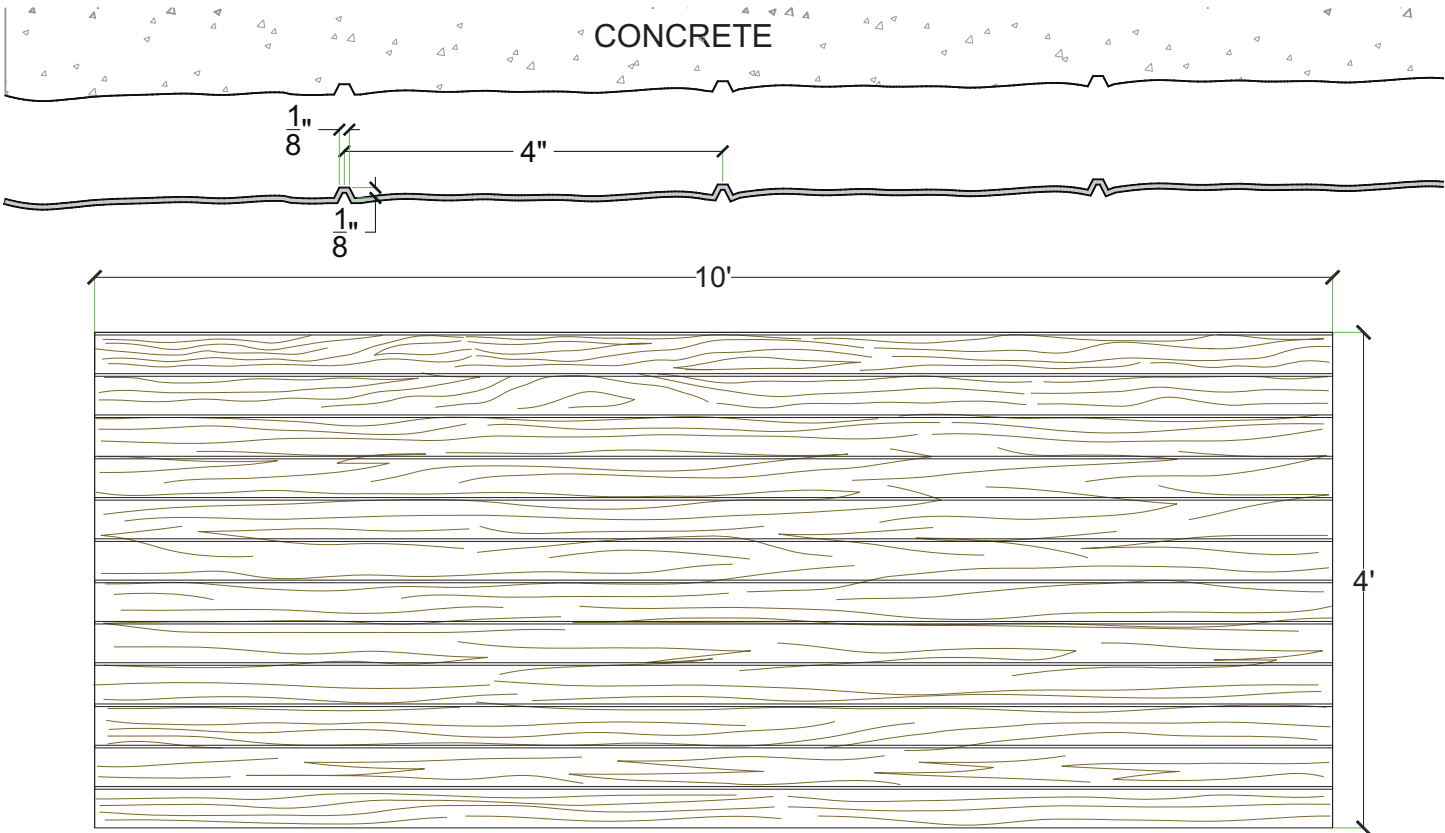
Note:

Pattern may require additional backing. We recommend a mockup pour simulating job conditions.

Material	Product Code	# of Reuses	Std. Dims.	Color
Styrene	6002-STY	1	4'x10'	White
ABS	6002-ABS	Up to 10	4'x10'	Gray

General Information:

Thermoformed ABS and Styrene plastic formliners are an inexpensive alternative for providing architectural concrete. The Styrene single use liner is the least expensive liner option. The ABS plastic formliner properties allows for an up to ten reuse factor depending on the design and handling.



Thermal Deformation:

- Do not expose to temperatures >140°F (60°C)

Care and Handling:

- Keep out of the sunlight and covered when not in use
- Keep away from steam, acids, and certain fuels
- For further instructions refer to the application guide

Thermal expansion:

- +/- 1/8" @ 70°F

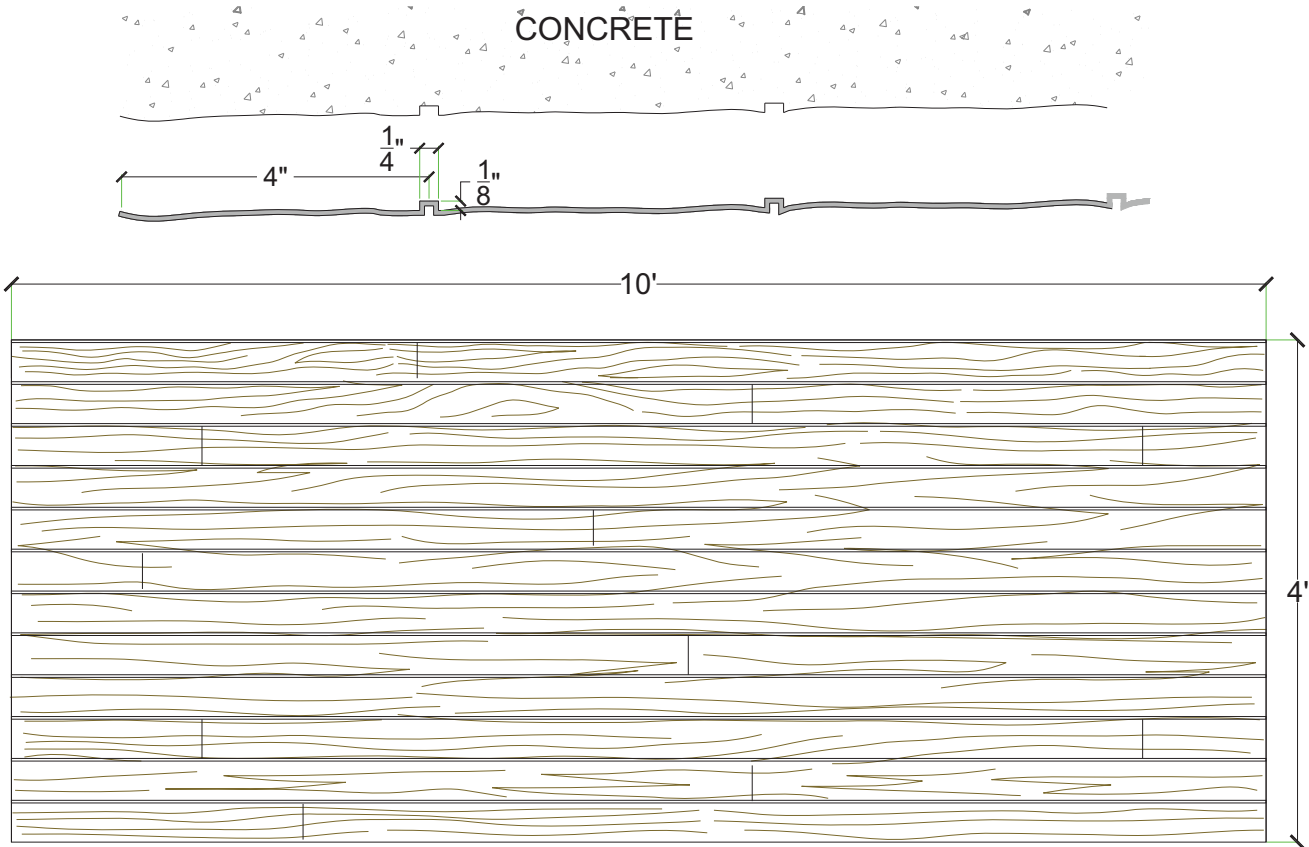
Note:

Pattern may require additional backing. We recommend a mockup pour simulating job conditions.

Material	Product Code	# of Reuses	Std. Dims.	Color
Styrene	6003-STY	1	4'x10'	White
ABS	6003-ABS	Up to 10	4'x10'	Gray

General Information:

Thermoformed ABS and Styrene plastic formliners are an inexpensive alternative for providing architectural concrete. The Styrene single use liner is the least expensive liner option. The ABS plastic formliner properties allows for an up to ten reuse factor depending on the design and handling.



Thermal Deformation:

- Do not expose to temperatures >140°F (60°C)

Care and Handling:

- Keep out of the sunlight and covered when not in use
- Keep away from steam, acids, and certain fuels
- For further instructions refer to the application guide

Thermal expansion:

- +/- 1/8" @ 70°F

Note:

Pattern may require additional backing. We recommend a mockup pour simulating job conditions.

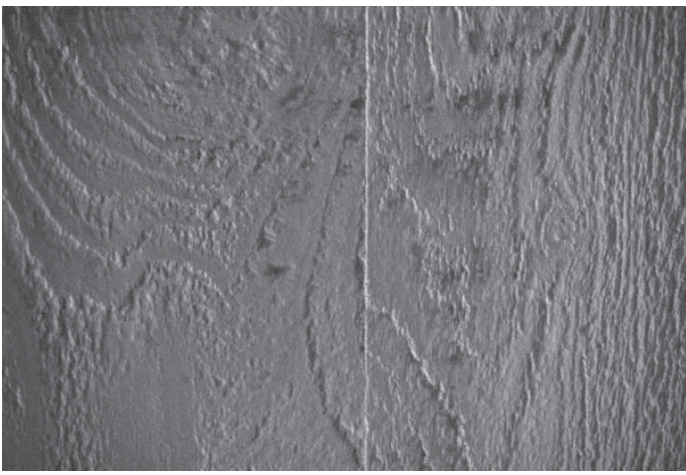
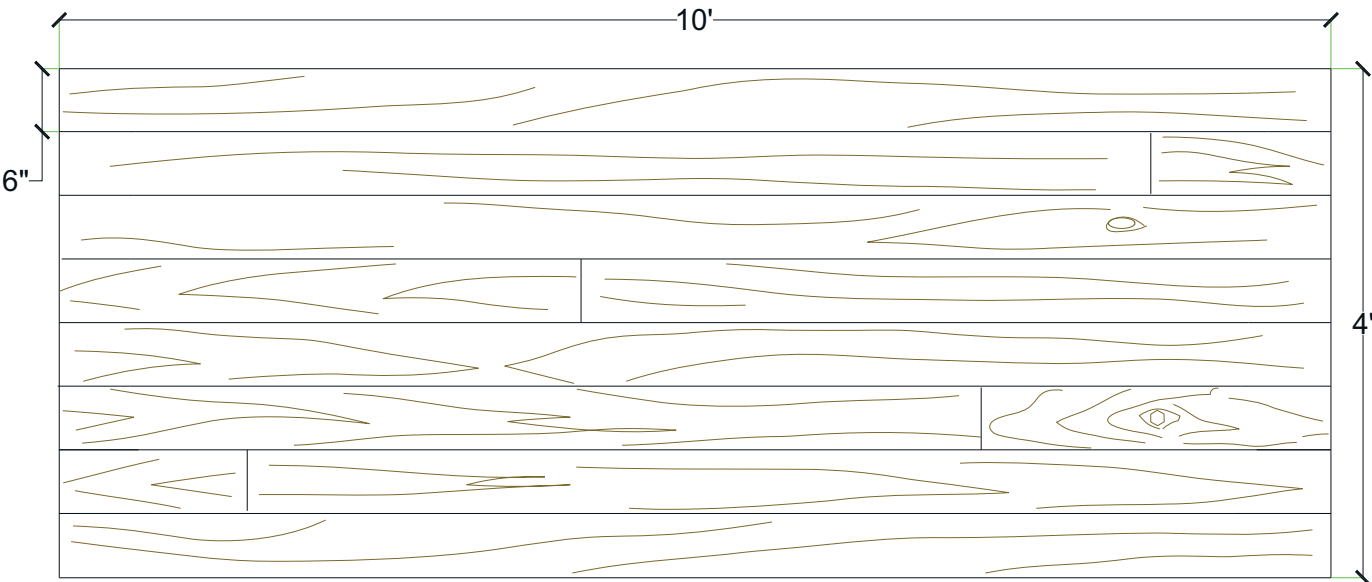
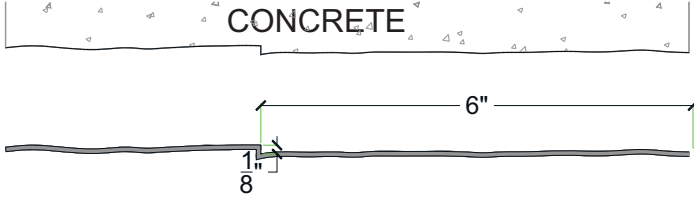
Material	Product Code	# of Reuses	Std. Dims.	Color
Styrene	6004-STY	1	4'x10'	White
ABS	6004-ABS	Up to 10	4'x10'	Gray

Pattern# 6005

6" Wide Plank Cedar

General Information:

Thermoformed ABS and Styrene plastic formliners are an inexpensive alternative for providing architectural concrete. The Styrene single use liner is the least expensive liner option. The ABS plastic formliner properties allows for an up to ten reuse factor depending on the design and handling.



- Thermal Deformation:**
- Do not expose to temperatures >140°F (60°C)
- Care and Handling:**
- Keep out of the sunlight and covered when not in use
 - Keep away from steam, acids, and certain fuels
 - For further instructions refer to the application guide
- Thermal expansion:**
- +/- 1/8" @ 70°F
- Note:**
Pattern may require additional backing. We recommend a mockup pour simulating job conditions.

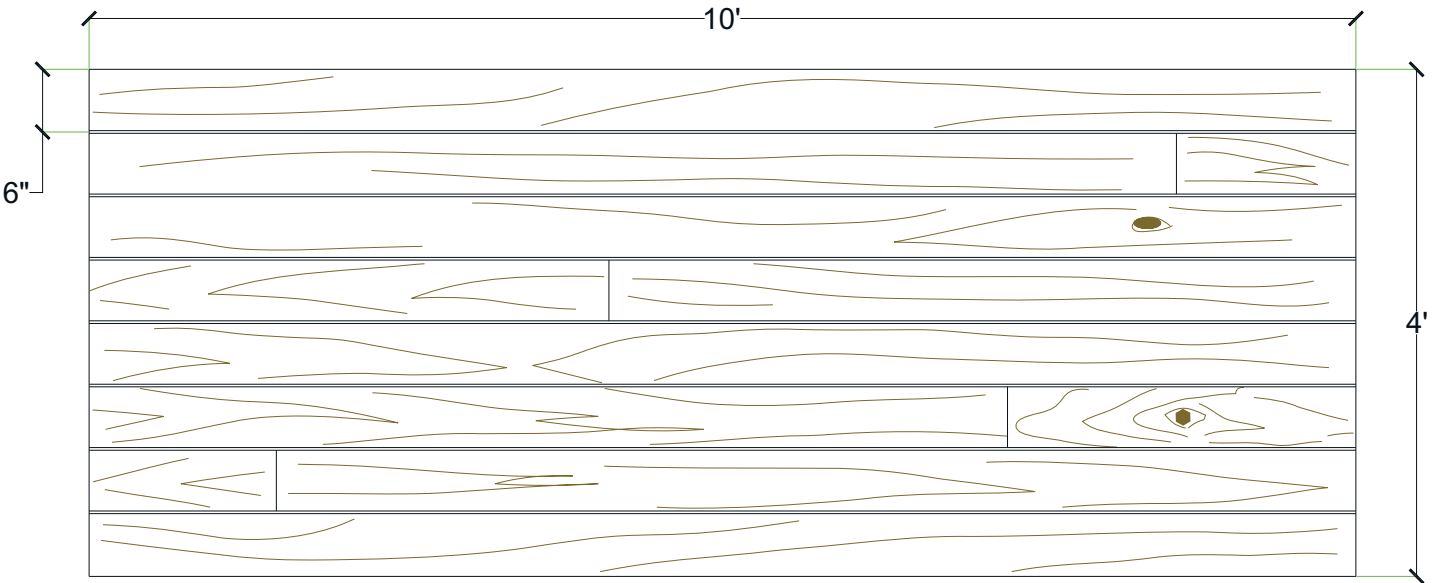
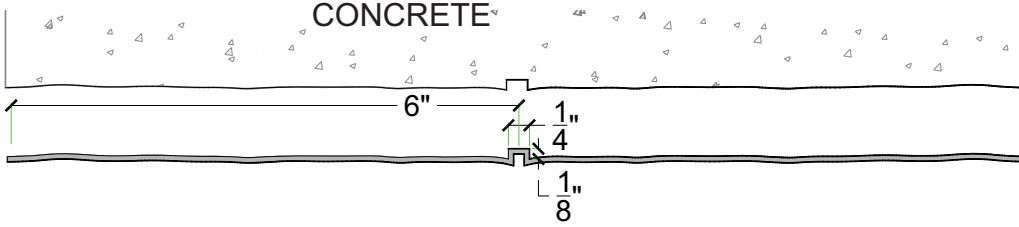
Material	Product Code	# of Reuses	Std. Dims.	Color
Styrene	6005-STY	1	4'x10'	White
ABS	6005-ABS	Up to 10	4'x10'	Gray

Pattern# 6006

6" Wide Plank Pine

General Information:

Thermoformed ABS and Styrene plastic formliners are an inexpensive alternative for providing architectural concrete. The Styrene single use liner is the least expensive liner option. The ABS plastic formliner properties allows for an up to ten reuse factor depending on the design and handling.



Thermal Deformation:

- Do not expose to temperatures >140°F (60°C)

Care and Handling:

- Keep out of the sunlight and covered when not in use
- Keep away from steam, acids, and certain fuels
- For further instructions refer to the application guide

Thermal expansion:

- +/- 1/8" @ 70°F

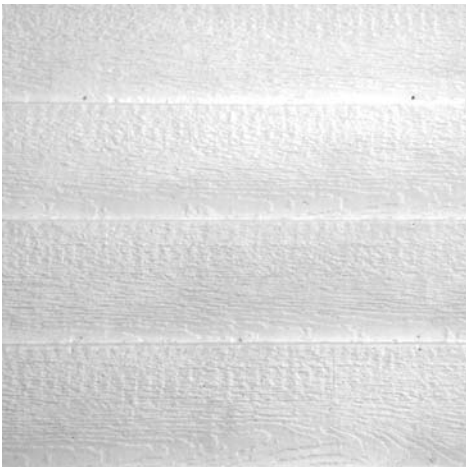
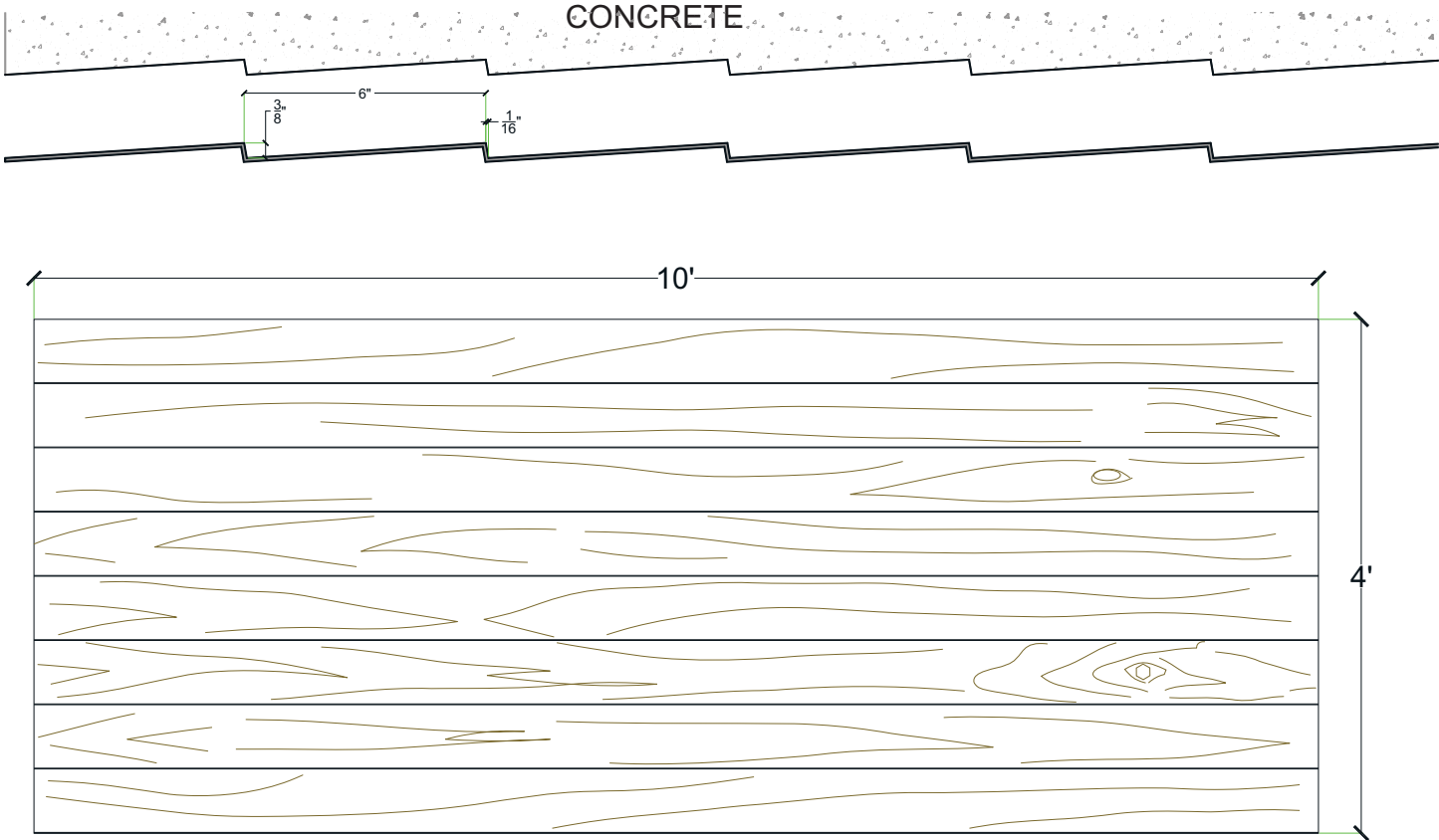
Note:

Pattern may require additional backing. We recommend a mockup pour simulating job conditions.

Material	Product Code	# of Reuses	Std. Dims.	Color
Styrene	6006-STY	1	4'x10'	White
ABS	6006-ABS	Up to 10	4'x10'	Gray

General Information:

Thermoformed ABS and Styrene plastic form liners are an inexpensive alternative for providing architectural concrete. The Styrene single use liner is the least expensive liner option. The ABS plastic form liner properties allows for an up to ten reuse factor depending on the design and handling.



Thermal Deformation:

- Do not expose to temperatures >140°F (60°C)

Care and Handling:

- Keep out of the sunlight and covered when not in use
- Keep away from steam, acids, and certain fuels
- For further instructions refer to the application guide

Thermal expansion:

- +/- 1/8" @ 70°F

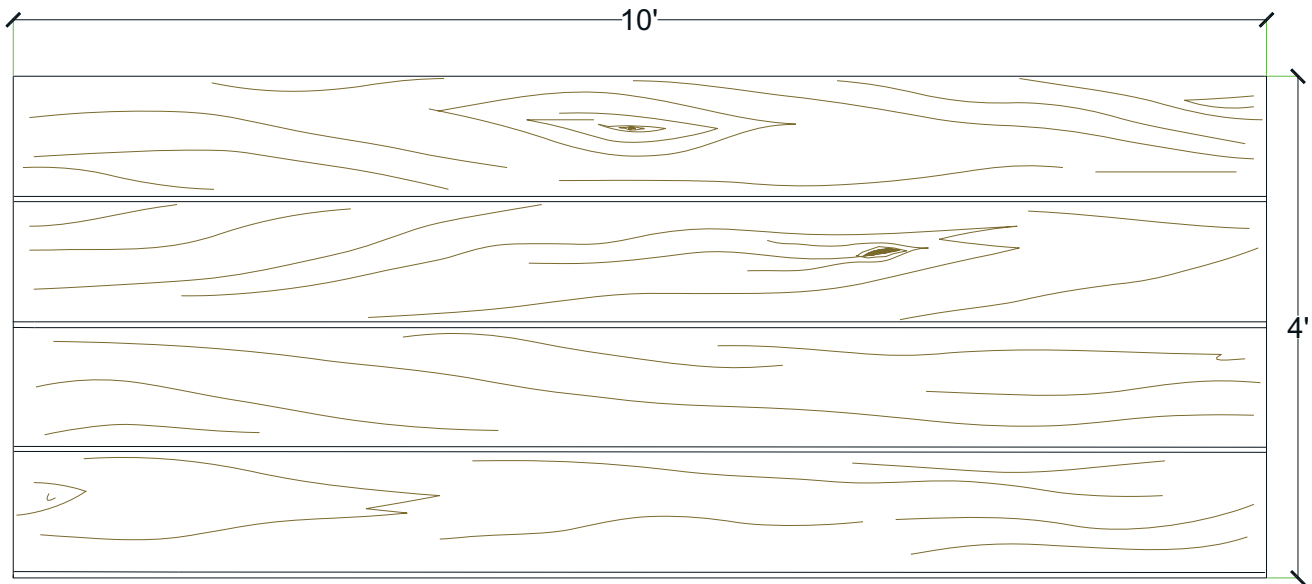
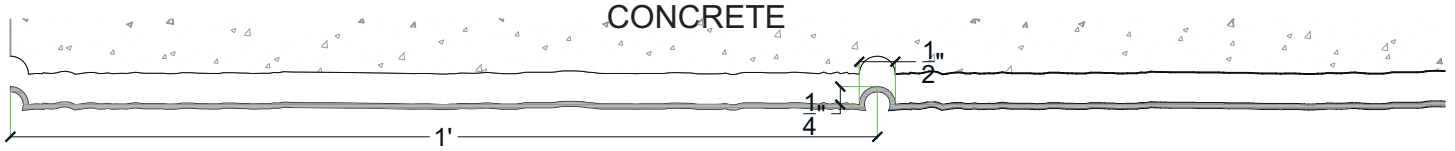
Note:

Pattern may require additional backing. We recommend a mockup pour simulating job conditions.

Material	Product Code	# of Reuses	Std. Dims.	Color
Styrene	6007-STY	1	4'x10'	White
ABS	6007-ABS	Up to 10	4'x10'	Gray

General Information:

Thermoformed ABS and Styrene plastic formliners are an inexpensive alternative for providing architectural concrete. The Styrene single use liner is the least expensive liner option. The ABS plastic formliner properties allows for an up to ten reuse factor depending on the design and handling.



Thermal Deformation:

- Do not expose to temperatures >140°F (60°C)

Care and Handling:

- Keep out of the sunlight and covered when not in use
- Keep away from steam, acids, and certain fuels
- For further instructions refer to the application guide

Thermal expansion:

- +/- 1/8" @ 70°F

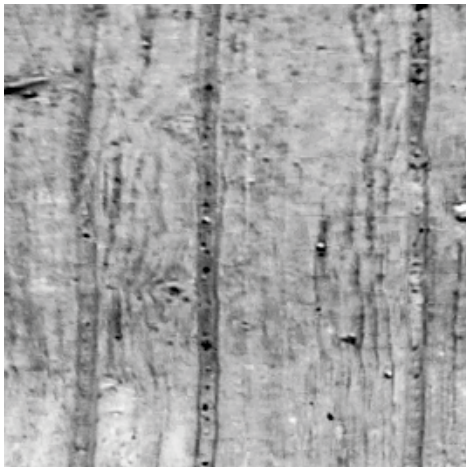
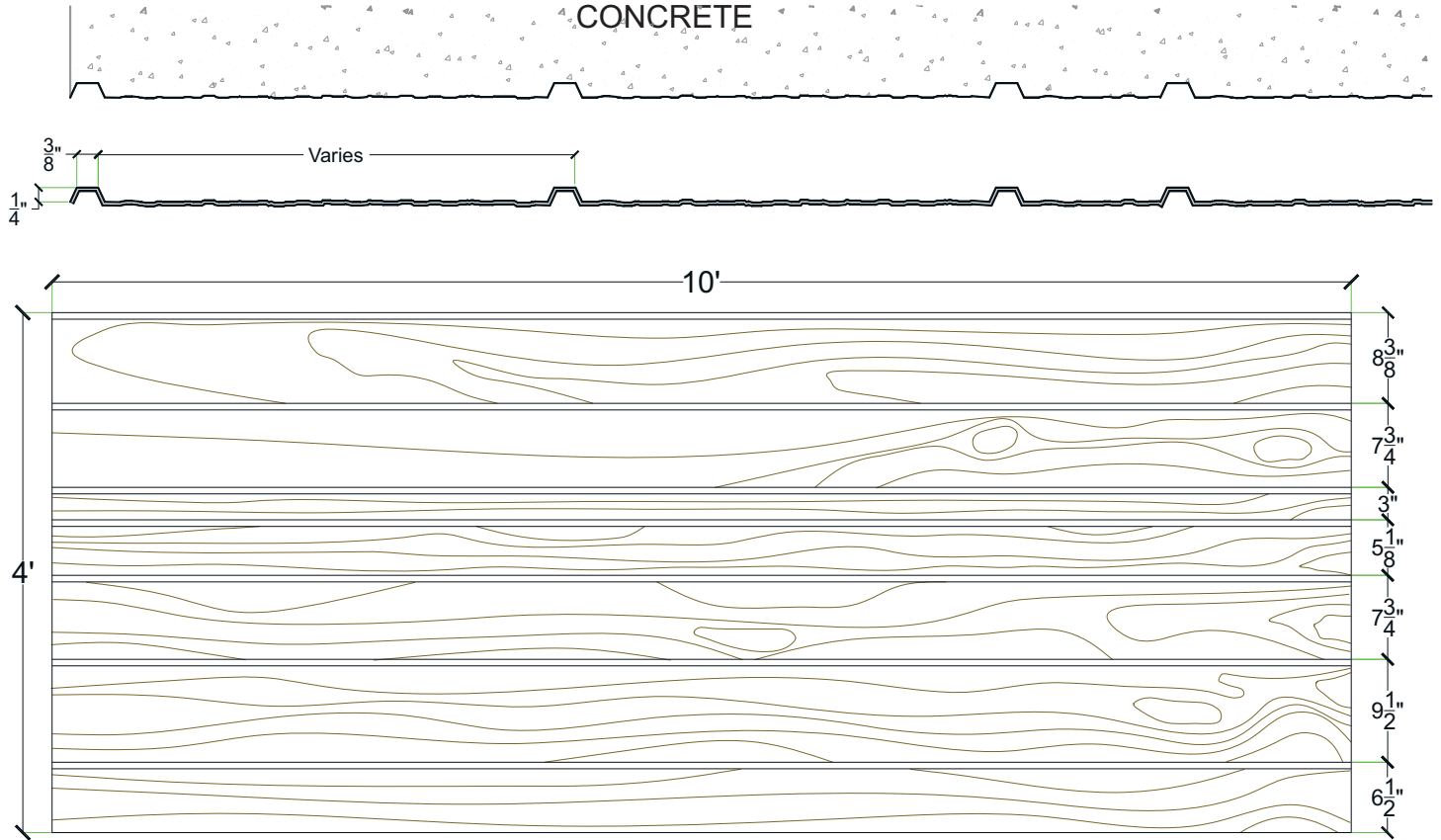
Note:

Pattern may require additional backing. We recommend a mockup pour simulating job conditions.

Material	Product Code	# of Reuses	Std. Dims.	Color
Styrene	6008-STY	1	4'x10'	White
ABS	6008-ABS	Up to 10	4'x10'	Gray

General Information:

Thermoformed ABS and Styrene plastic formliners are an inexpensive alternative for providing architectural concrete. The Styrene single use liner is the least expensive liner option. The ABS plastic formliner properties allows for an up to ten reuse factor depending on the design and handling.



Thermal Deformation:

- Do not expose to temperatures >140°F (60°C)

Care and Handling:

- Keep out of the sunlight and covered when not in use
- Keep away from steam, acids, and certain fuels
- For further instructions refer to the application guide

Thermal expansion:

- +/- 1/8" @ 70°F

Note:

Pattern may require additional backing. We recommend a mockup pour simulating job conditions.

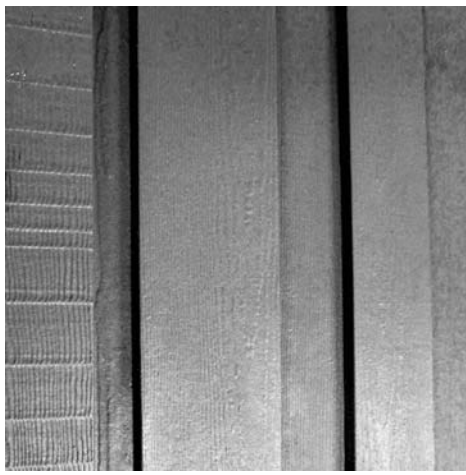
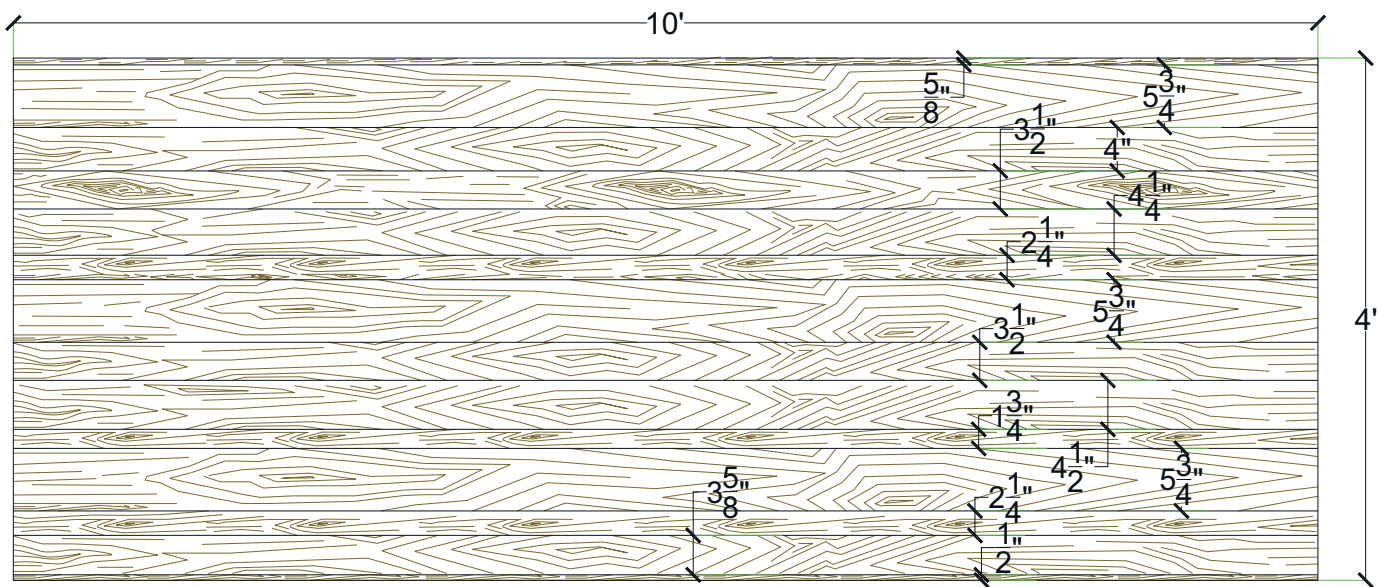
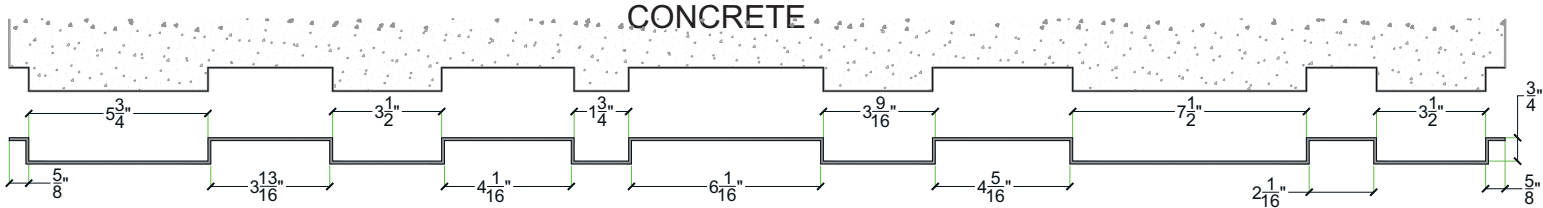
Material	Product Code	# of Reuses	Std. Dims.	Color
Styrene	6009-STY	1	4'x10'	White
ABS	6009-ABS	Up to 10	4'x10'	Gray

Pattern# 6010

Random Width and Depth Cedar

General Information:

Thermoformed ABS and Styrene plastic formliners are an inexpensive alternative for providing architectural concrete. The Styrene single use liner is the least expensive liner option. The ABS plastic formliner properties allows for an up to ten reuse factor depending on the design and handling.



- Thermal Deformation:**
- Do not expose to temperatures >140°F (60°C)
- Care and Handling:**
- Keep out of the sunlight and covered when not in use
 - Keep away from steam, acids, and certain fuels
 - For further instructions refer to the application guide

Thermal expansion:

- +/- 1/8" @ 70°F

Note:
Pattern may require additional backing. We recommend a mockup pour simulating job conditions.

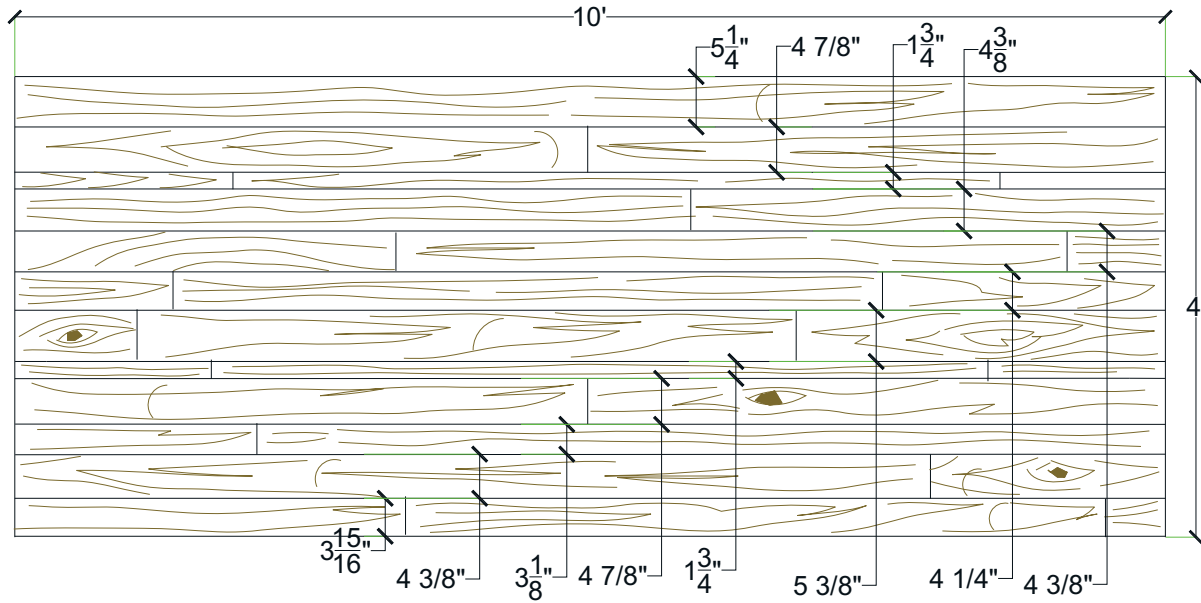
Material	Product Code	# of Reuses	Std. Dims.	Color
Styrene	6010-STY	1	4'x10'	White
ABS	6010-ABS	Up to 10	4'x10'	Gray

Pattern# 6012

Random Width and Depth Rough Sawn Cedar Planks

General Information:

Thermoformed ABS and Styrene plastic formliners are an inexpensive alternative for providing architectural concrete. The Styrene single use liner is the least expensive liner option. The ABS plastic formliner properties allows for an up to ten reuse factor depending on the design and handling.



Thermal Deformation:

- Do not expose to temperatures >140°F (60°C)

Care and Handling:

- Keep out of the sunlight and covered when not in use
- Keep away from steam, acids, and certain fuels
- For further instructions refer to the application guide

Thermal expansion:

- +/- 1/8" @ 70°F

Note:

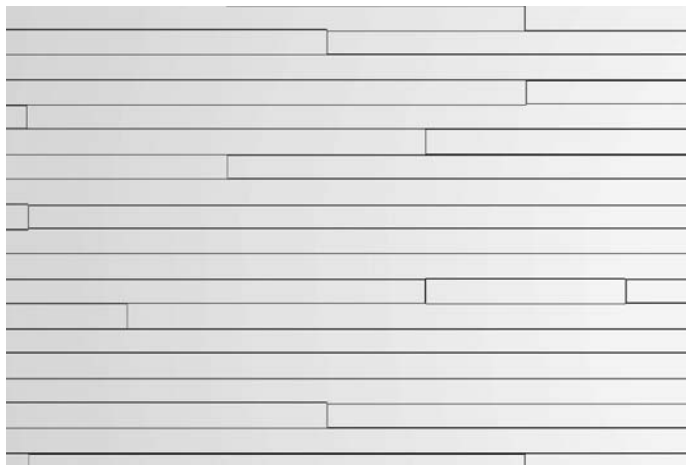
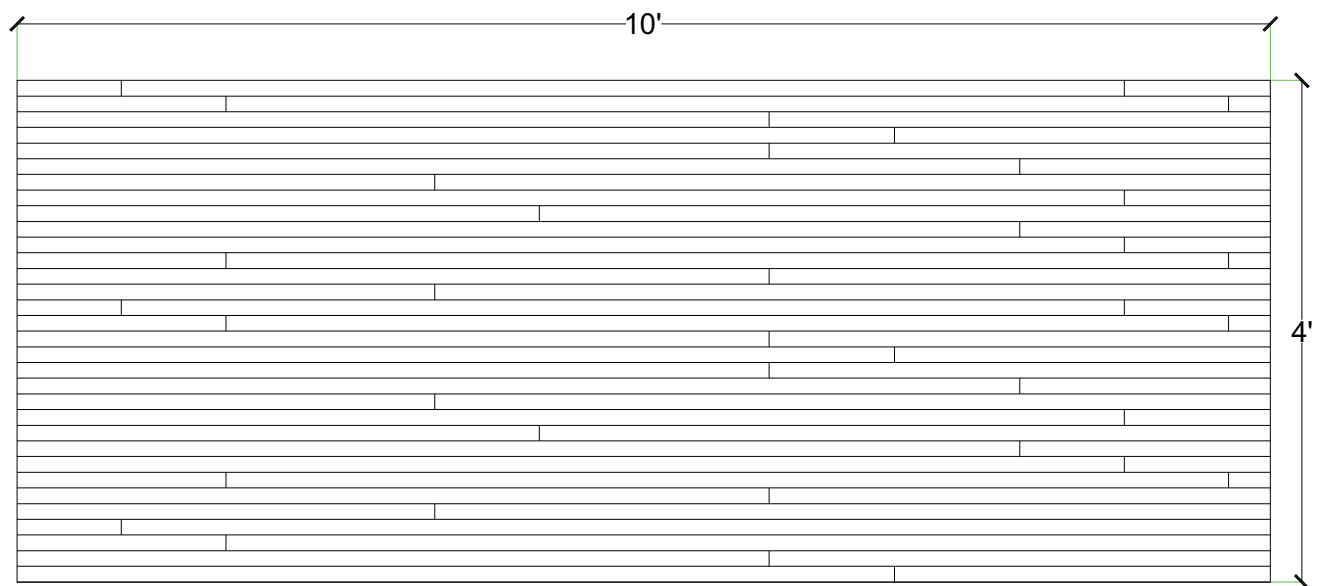
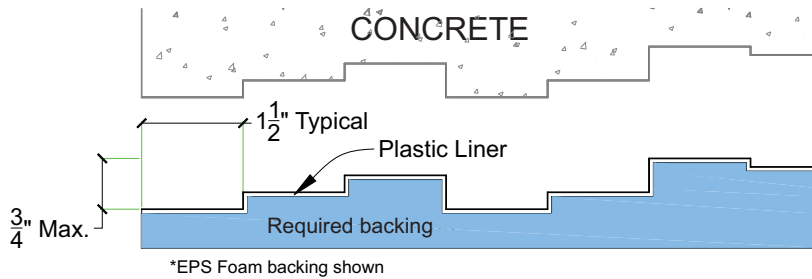
Pattern may require additional backing. We recommend a mockup pour simulating job conditions.

Material	Product Code	# of Reuses	Std. Dims.	Color
Styrene	6012-STY	1	4'x10'	White
ABS	6012-ABS	Up to 10	4'x10'	Gray

1 1/2" Smooth Planks - Variable Depths

General Information:

Thermoformed ABS and Styrene plastic formliners are an inexpensive alternative for providing architectural concrete. The Styrene single use liner is the least expensive liner option. The ABS plastic formliner properties allows for an up to ten reuse factor depending on the design and handling.



Thermal Deformation:

- Do not expose to temperatures >140°F (60°C)

Care and Handling:

- Keep out of the sunlight and covered when not in use
- Keep away from steam, acids, and certain fuels
- For further instructions refer to the application guide

Thermal expansion:

- +/- 1/8" @ 70°F

Note:

Pattern may require additional backing. We recommend a mockup pour simulating job conditions.

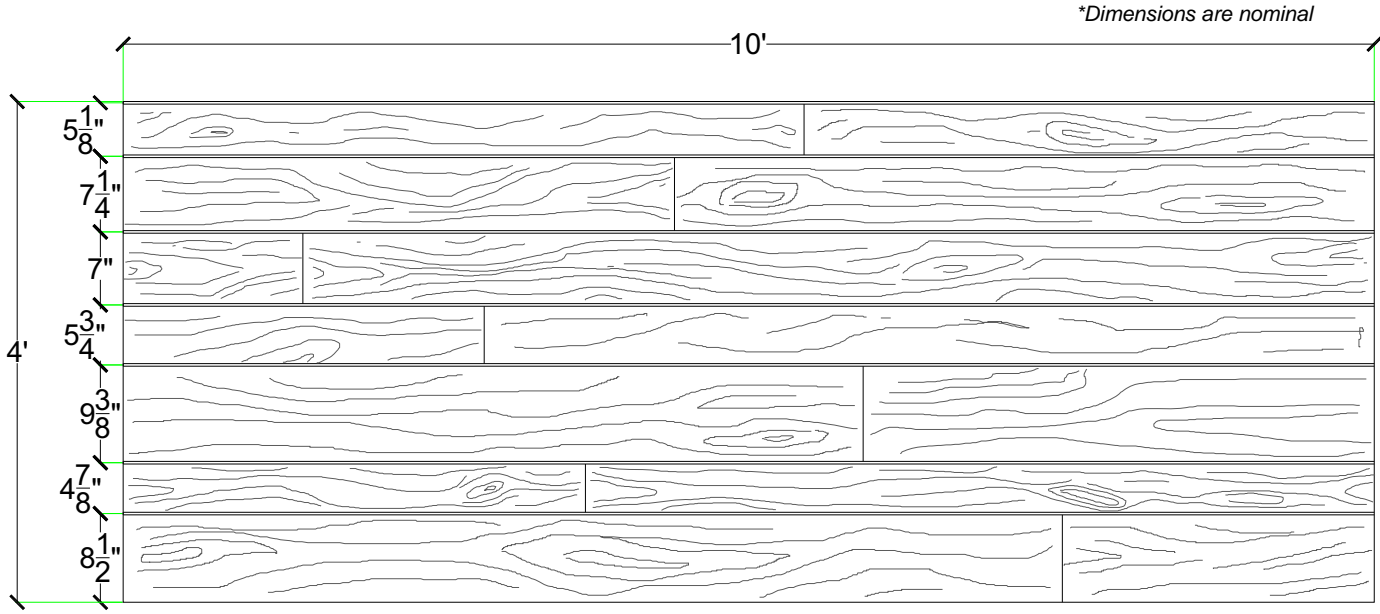
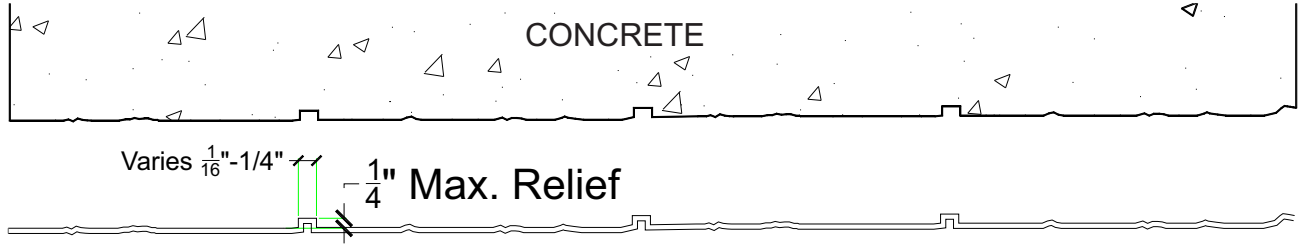
Material	Product Code	# of Reuses	Std. Dims.	Color
Styrene	6014-STY	1	4'x10'	White
ABS	6014-ABS	Up to 10	4'x10'	Gray

Pattern #6015

Rustic Barnwood

General Information:

Thermoformed ABS and Styrene plastic form liners are an inexpensive alternative for providing architectural concrete. The Styrene single use liner is the least expensive liner option. The ABS plastic form liner properties allows for an up to ten reuse factor depending on the design and handling.



- Thermal Deformation:**
- Do not expose to temperatures >140°F (60°C)
- Care and Handling:**
- Keep out of the sunlight and covered when not in use
 - Keep away from steam, acids, and certain fuels
 - For further instructions refer to the application guide
- Thermal expansion:**
- +/- 1/8" @ 70°F
- Note:**
Pattern may require additional backing. We recommend a mockup pour simulating job conditions.

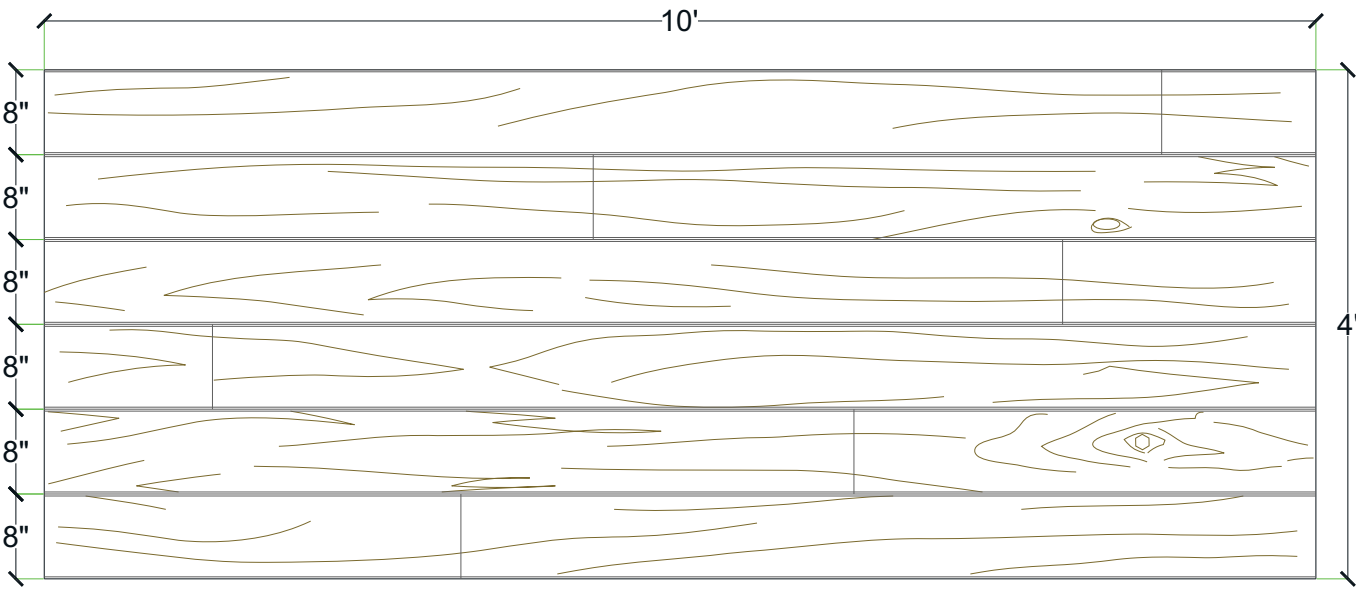
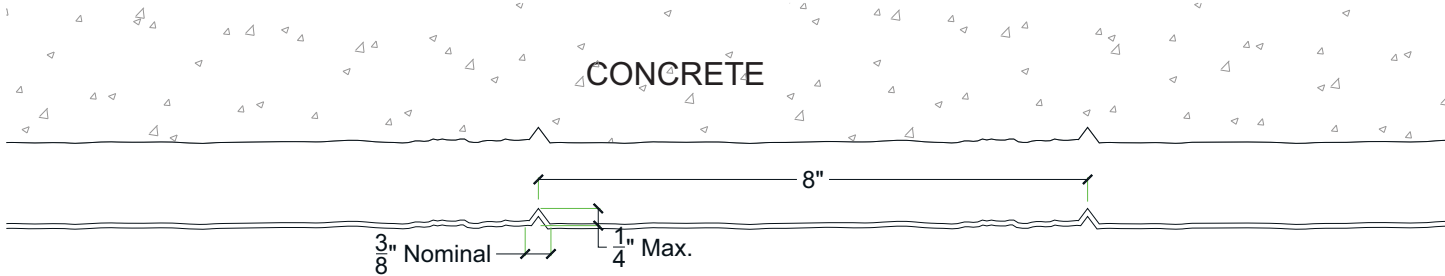
Material	Product Code	# of Reuses	Std. Dims.	Color
Styrene	6015-STY	1	4'x10'	White
ABS	6015-ABS	Up to 10	4'x10'	Gray

Pattern# 6017

8" Wide Plank Cedar

General Information:

Thermoformed ABS and Styrene plastic formliners are an inexpensive alternative for providing architectural concrete. The Styrene single use liner is the least expensive liner option. The ABS plastic formliner properties allows for an up to ten reuse factor depending on the design and handling.

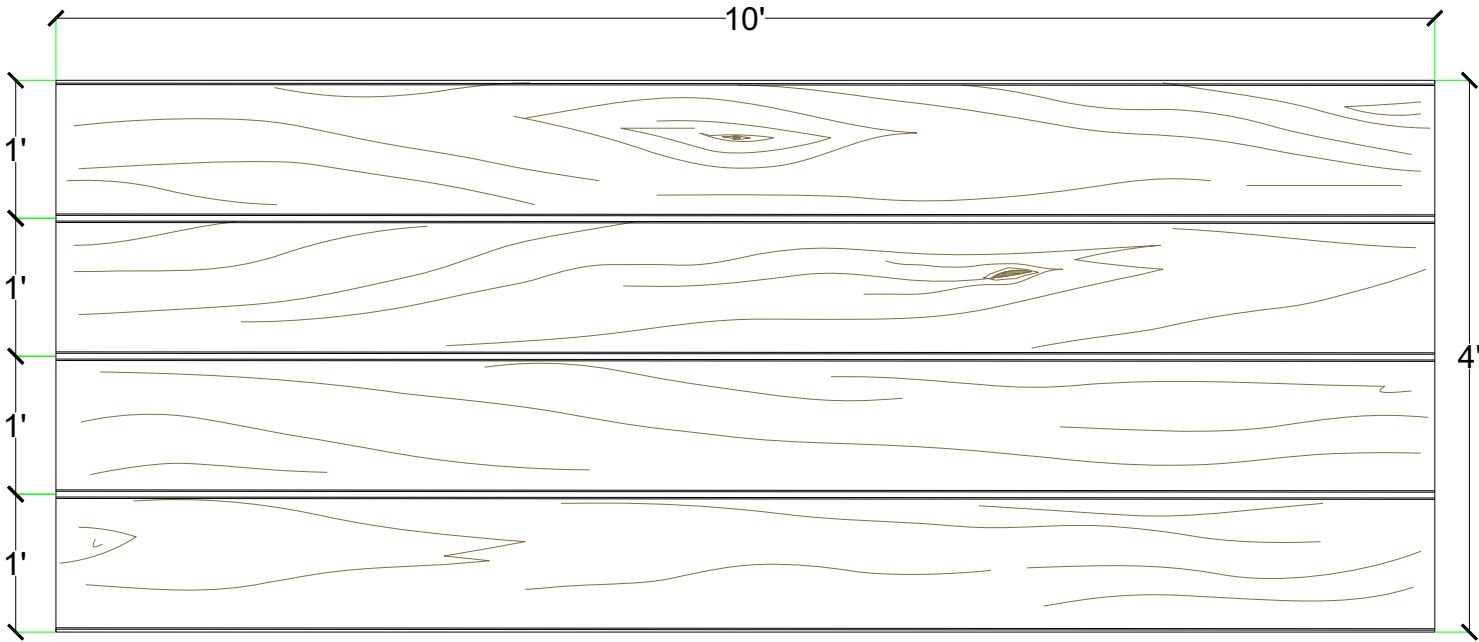
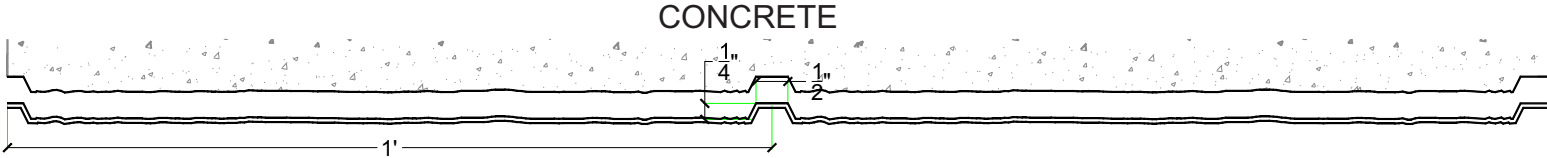


- Thermal Deformation:**
- Do not expose to temperatures >140°F (60°C)
- Care and Handling:**
- Keep out of the sunlight and covered when not in use
 - Keep away from steam, acids, and certain fuels
 - For further instructions refer to the application guide
- Thermal expansion:**
- +/- 1/8" @ 70°F
- Note:**
Pattern may require additional backing. We recommend a mockup pour simulating job conditions.

Material	Product Code	# of Reuses	Std. Dims.	Color
Styrene	6017-STY	1	4'x10'	White
ABS	6017-ABS	Up to 10	4'x10'	Gray

General Information:

Thermoformed ABS and Styrene plastic formliners are an inexpensive alternative for providing architectural concrete. The Styrene single use liner is the least expensive liner option. The ABS plastic formliner properties allows for an up to ten reuse factor depending on the design and handling.



Thermal Deformation:

- Do not expose to temperatures >140°F (60°C)

Care and Handling:

- Keep out of the sunlight and covered when not in use
- Keep away from steam, acids, and certain fuels
- For further instructions refer to the application guide

Thermal expansion:

- +/- 1/8" @ 70°F

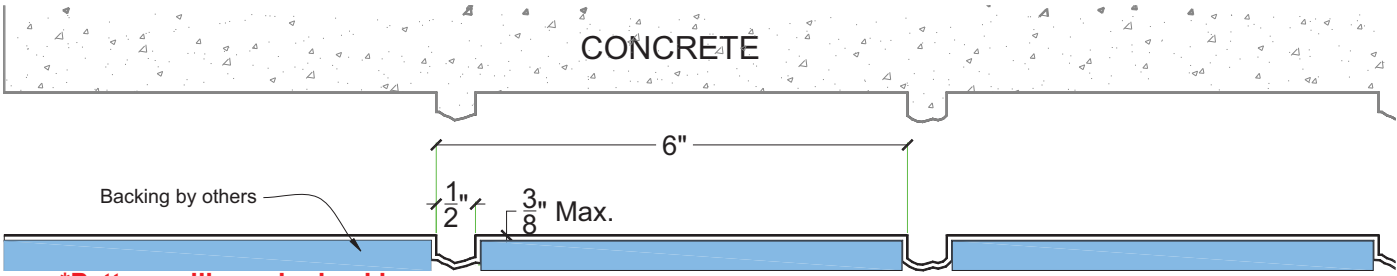
Note:

Pattern may require additional backing. We recommend a mockup pour simulating job conditions.

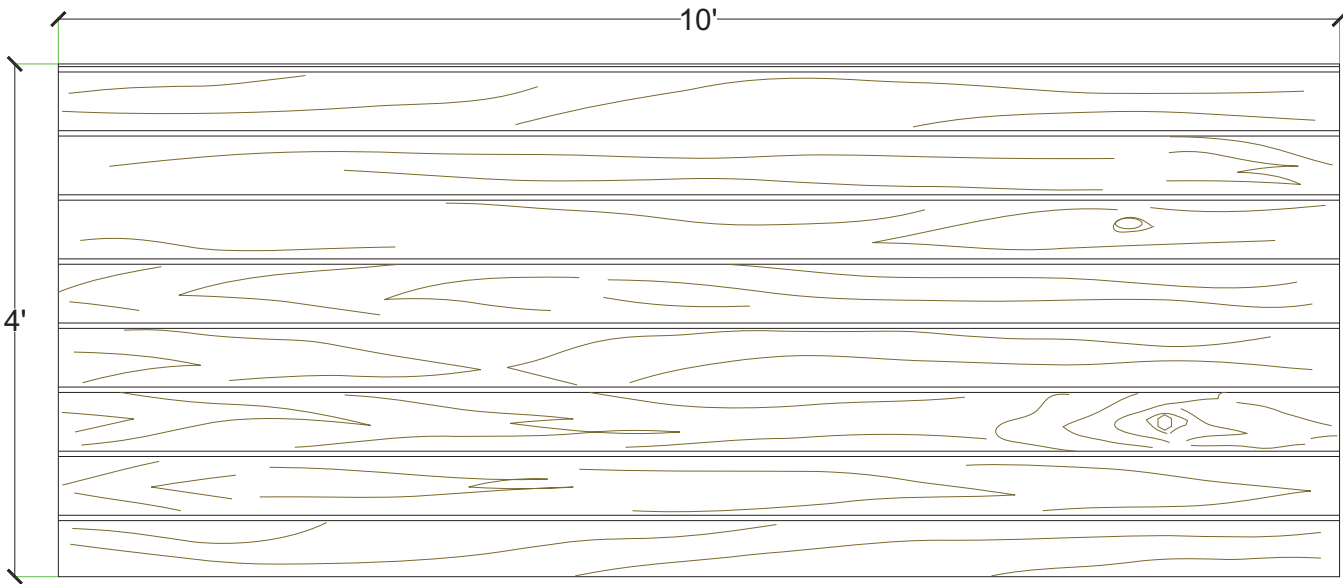
Material	Product Code	# of Reuses	Std. Dims.	Color
Styrene	6019-STY	1	4'x10'	White
ABS	6019-ABS	Up to 10	4'x10'	Gray

General Information:

Thermoformed ABS and Styrene plastic formliners are an inexpensive alternative for providing architectural concrete. The Styrene single use liner is the least expensive liner option. The ABS plastic formliner properties allows for an up to ten reuse factor depending on the design and handling.



***Pattern will require backing**
****Dimensions are nominal**



Thermal Deformation:

- Do not expose to temperatures >140°F (60°C)

Care and Handling:

- Keep out of the sunlight and covered when not in use
- Keep away from steam, acids, and certain fuels
- For further instructions refer to the application guide

Thermal expansion:

- +/- 1/8" @ 70°F

Note:

Pattern may require additional backing. We recommend a mockup pour simulating job conditions.

Material	Product Code	# of Reuses	Std. Dims.	Color
Styrene	6021-STY	1	4'x10'	White
ABS	6021-ABS	Up to 10	4'x10'	Gray

Pattern #6023

Variable Depth Variable Width
Smooth Boards

customrock

FORMLINER



2' x 2' Picture Area

V-Lite Plastic Fomliner

Materials:

- STY - Polystyrene (White) - Single Use
- ABS (Gray) - Up to 10 Reuses

Care and Handling:

- Keep out of the sunlight and cover when not in use.
- Keep away from steam, acids, and certain fuels
- For further instructions refer to application guide

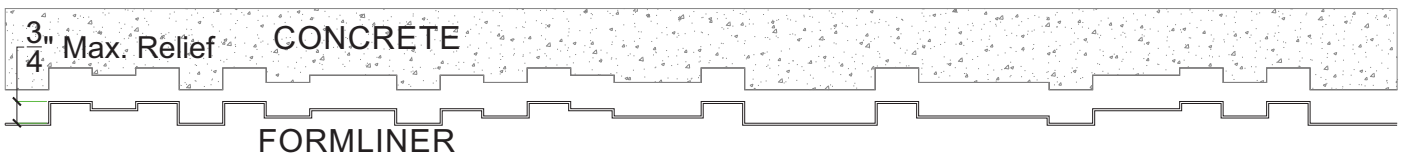
Thermal Expansion:

- Approximately 1/16" per every 10°F change in material temperature.

Note:

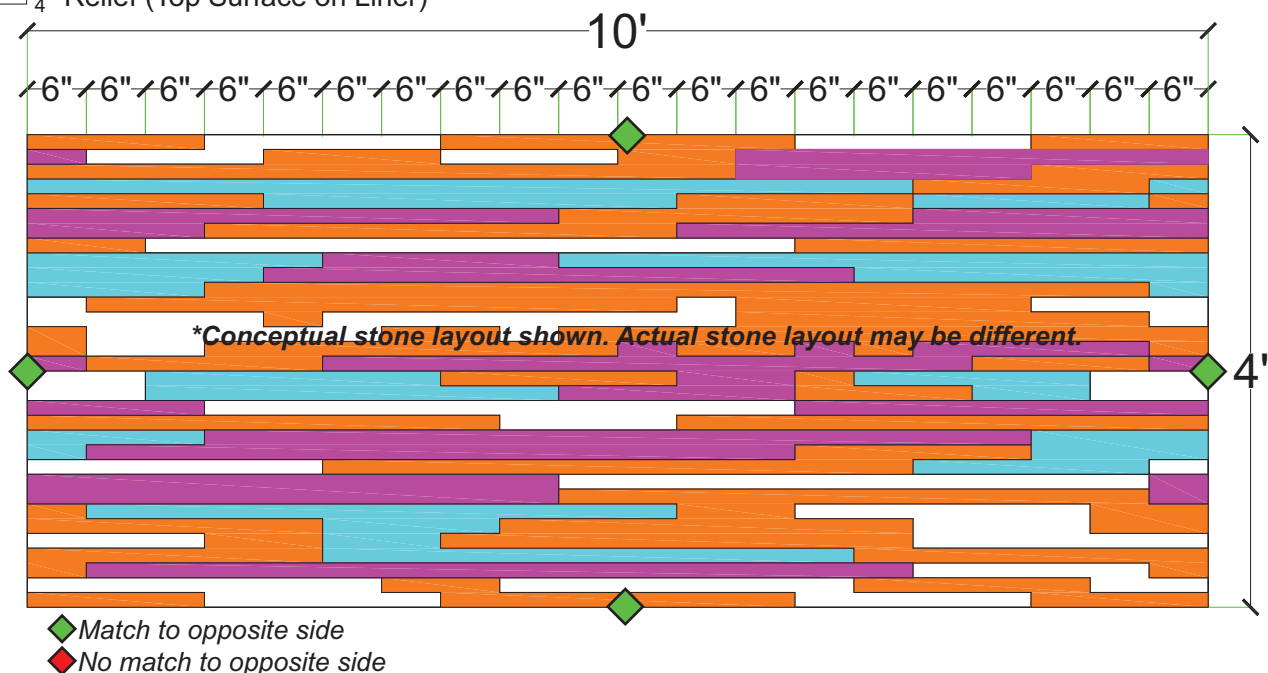
- Pattern may require additional backing. We recommend a mockup pour simulating actual job conditions.
- Refer to Application Guide.

Section View

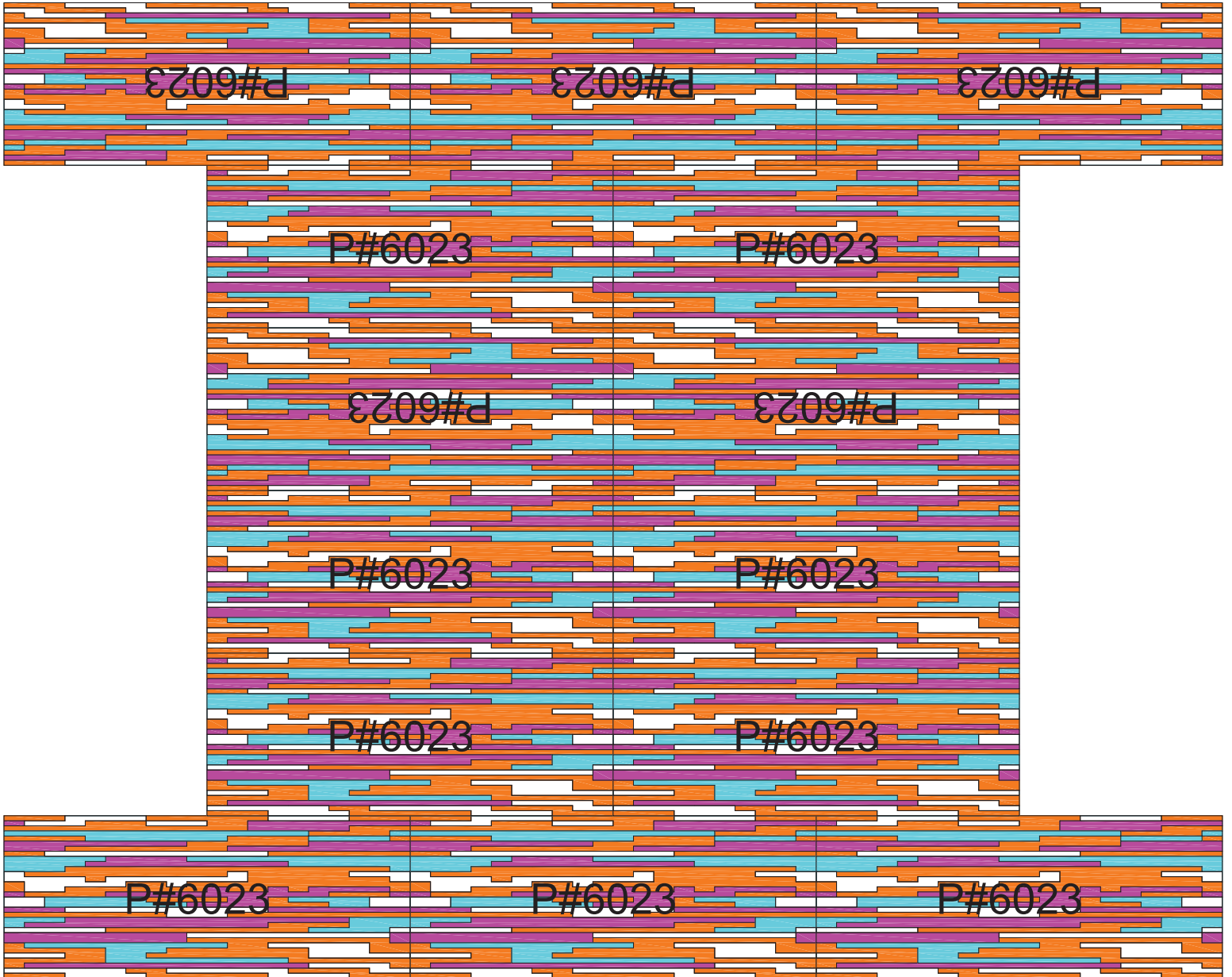


- 0" Relief (Bottom Surface on Liner)
- 1/4" Relief
- 1/2" Relief
- 3/4" Relief (Top Surface on Liner)

Elevation View



Pattern Layout



Pattern #6025

Variable Depth Variable Width
Rustic Woodgrain Boards

V-Lite Plastic Fomliner

Materials:

- STY - Polystyrene (White) - Single Use
- ABS (Gray) - Up to 10 Reuses

Care and Handling:

- Keep out of the sunlight and cover when not in use.
- Keep away from steam, acids, and certain fuels
- For further instructions refer to application guide

Thermal Expansion:

- Approximately 1/16" per every 10°F change in material temperature.

Note:

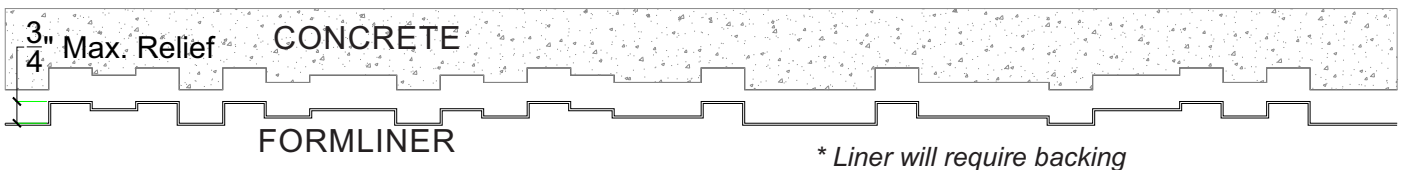
- Pattern may require additional backing. We recommend a mockup pour simulating actual job conditions.
- Refer to Application Guide.

*Custom Liner
Picture Not Available*

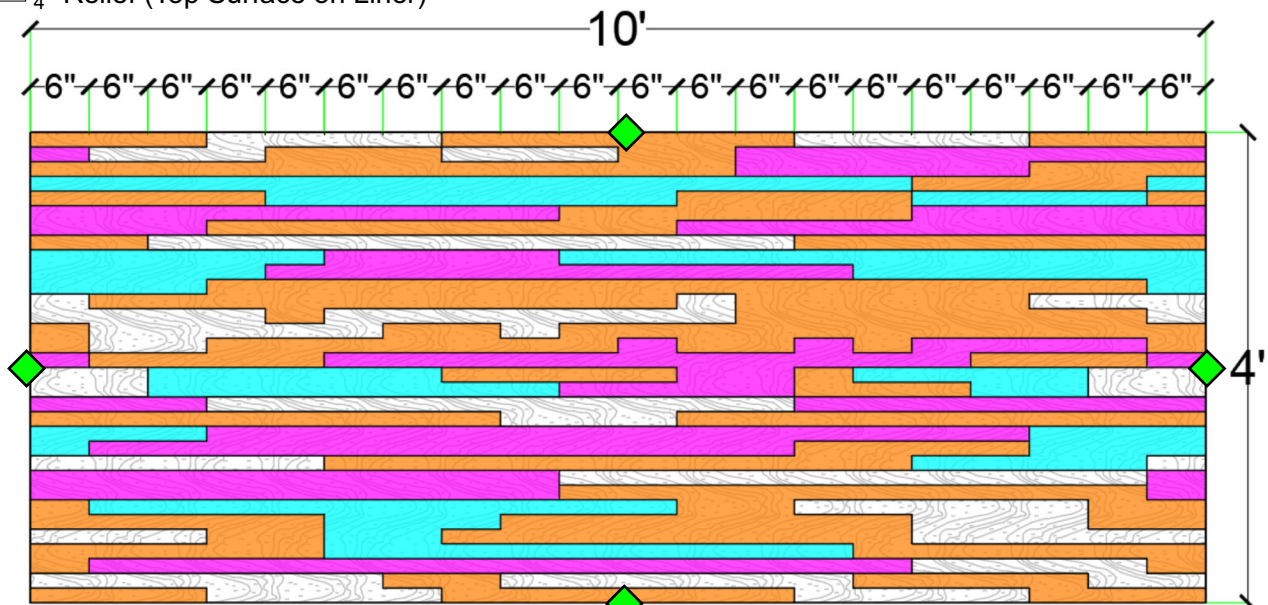
2' x 2' Picture Area

Section View

Elevation View



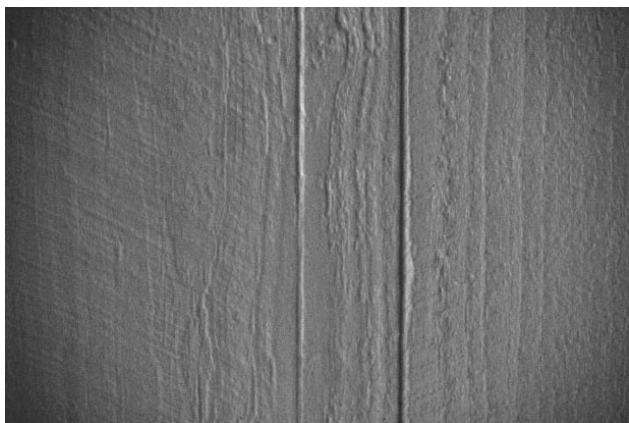
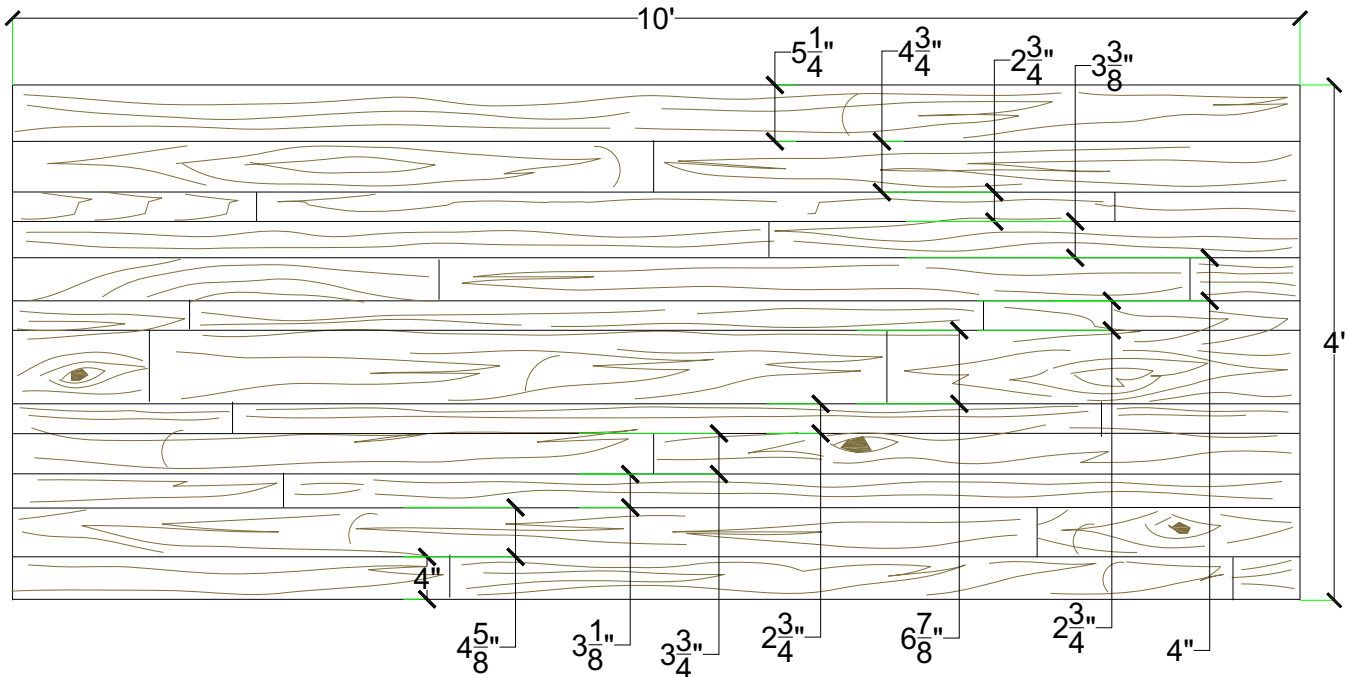
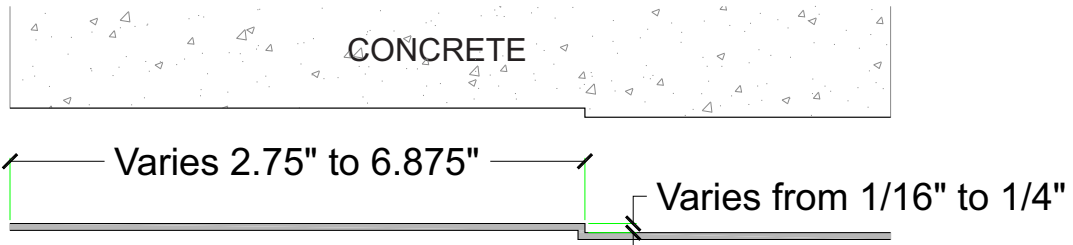
- 0" Relief (Bottom Surface on Liner)
- 1/4" Relief
- 1/2" Relief
- 3/4" Relief (Top Surface on Liner)



- Match to opposite side
- No match to opposite side

General Information:

Thermoformed ABS and Styrene plastic formliners are an inexpensive alternative for providing architectural concrete. The Styrene single use liner is the least expensive liner option. The ABS plastic formliner properties allows for an up to ten reuse factor depending on the design and handling.



Thermal Deformation:

- Do not expose to temperatures >140°F (60°C)

Care and Handling:

- Keep out of the sunlight and covered when not in use
- Keep away from steam, acids, and certain fuels
- For further instructions refer to the application guide

Thermal expansion:

- +/- 1/8" @ 70°F

Note:

Pattern may require additional backing. We recommend a mockup pour simulating job conditions.

Material	Product Code	# of Reuses	Std. Dims.	Color
Styrene	6026-STY	1	4'x10'	White
ABS	6026-ABS	Up to 10	4'x10'	Gray