

Access Tile[®]

Tactile Systems

the power of intelligent design
and precision engineering™

exceptional value
replaceability
installs in minutes
superior performance

www.accesstile.com 888-679-4022

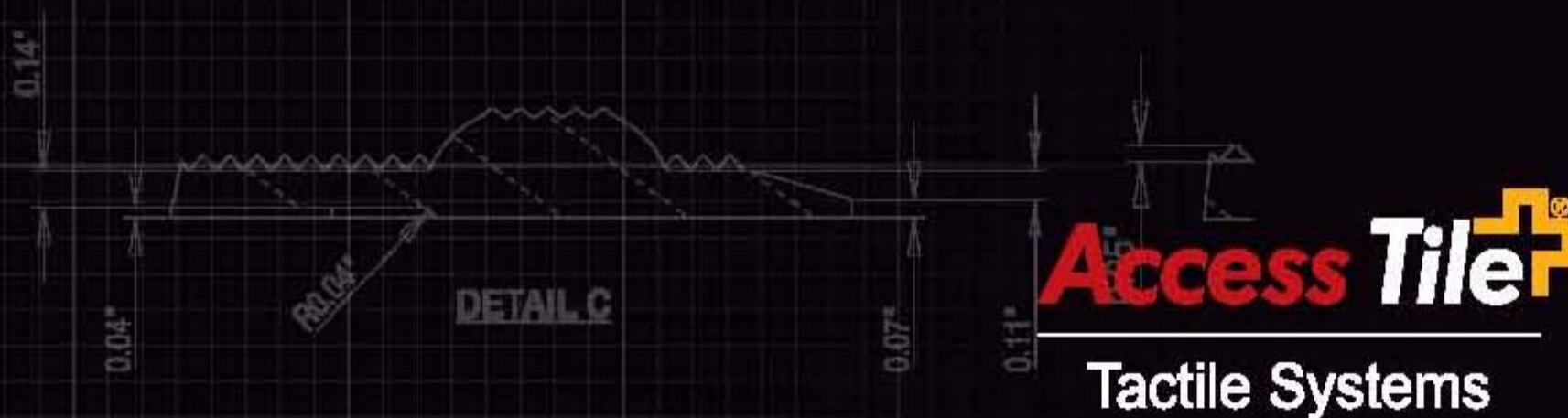
Access Products Inc.
www.accessproducts.com



Introducing the **ultimate solution™** in detectable warning systems.

With 20 years of leading research insights and progressive product development experience, Access Products Inc. has combined proven polymer processing and material technologies with innovative and intelligent design features to create the ultimate in detectable warning tiles.

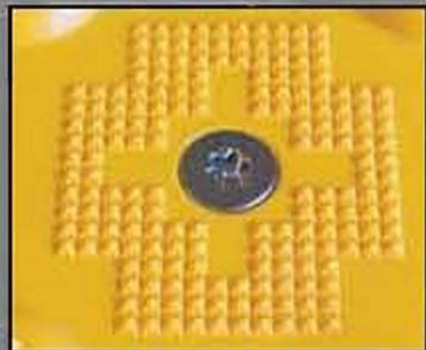
Maximized efficiencies in manufacturing, materials sourcing and product specifications deliver the most cost-effective solution in the industry.



the power of intelligent design
and precision engineering™

intelligent design™

the genesis of 20 years of innovation



Tamper-proof, counter-sunk, stainless steel fastener sets flush with tile surface and provides for future replaceability.



High density, diamond grip™ pyramid micro texture designed for exceptional slip resistance in wet and dry conditions.



Nylon composite, corrosion resistant anchor and stainless steel fastener provide unlimited re-installation due to self-threading design.



Tile geometry allows for consistent dome spacing to be maintained between adjoining Cast In Place Replaceable and Surface Applied tiles.



Hexagonal molded forms for permanent interface between tile and anchor system. Fastener/anchor system comes pre-assembled.



Strategically placed reinforcing internal ribs determined by Finite Element Analysis (FEA) generates enhanced stiffness and structural support.



Pre-formed fastener locations enable error-free installation. Color-matched Tek™ Anchor with stainless steel fastener is supplied with tile.



Reinforced top and bottom flange determined by Finite Element Analysis (FEA) generates enhanced stiffness and structural support.



Perimeter of tile is bevelled to meet ADA requirements for surface height transition.



Open end design eliminates air entrapment during installation to ensure full interface with concrete substructure.

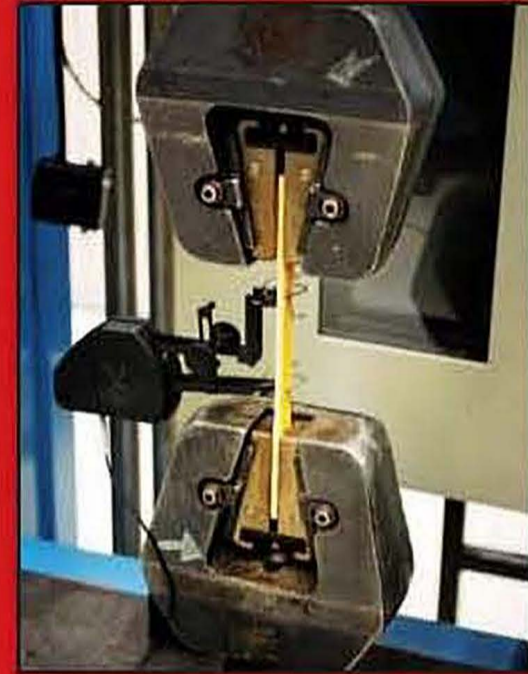
proven performance

the rigor of unparalleled testing procedures



Accelerated Aging/Freeze-Thaw Chamber

Extreme heat and freezing cycles test structural integrity in all climates while integral loading cylinders stress tile throughout temperature cycles to validate durability.



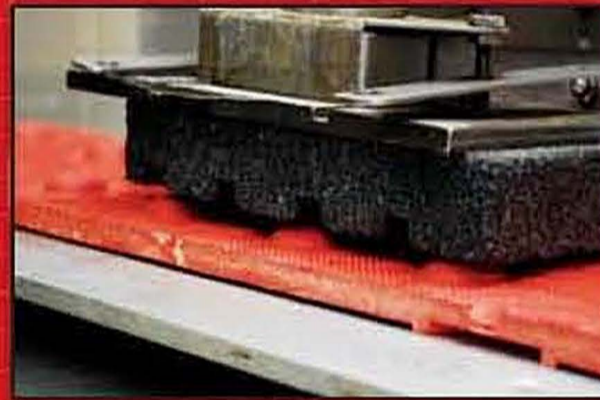
Tensile Strength - ASTM D 638

Engineering analysis calculates required strengths when exposed to externally applied forces, such as foot traffic and moving vehicles.



Taber Abrasion - ASTM C 501

Measures the wear resistance of tile to ensure years of maintenance-free service.



Gardner Abrasion - ASTM D 2486

Additional wear test standard to ensure durability in high foot traffic areas.



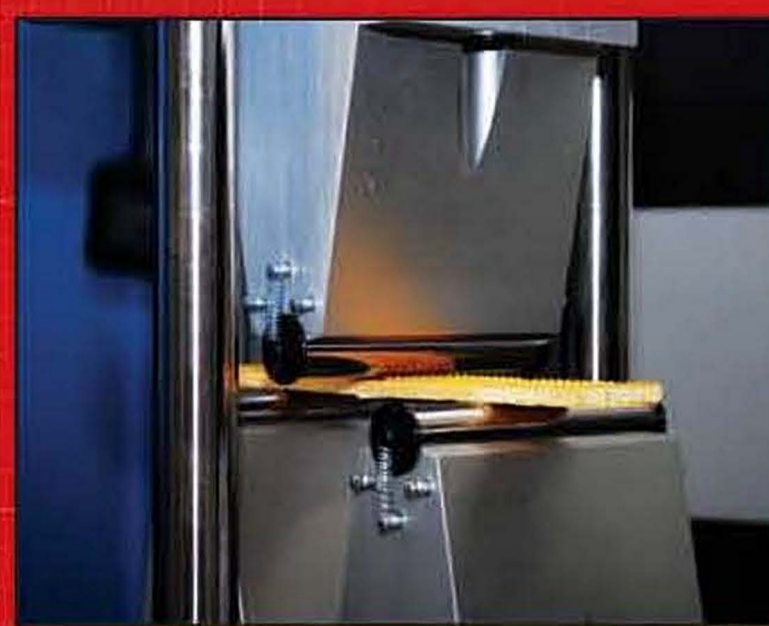
Compressive Strength - ASTM D 695

Measures compressive strength to meet AASHTO standards developed to determine resistance of vehicular loading.



Slip Resistance - ASTM C 1028

Measures slip resistance to meet ADA and OSHA standards in both wet and dry conditions.



Flexural Strength - ASTM D 695

Measures flexural properties of material required to analyze the strength necessary to resist repetitive applied forces.

Accredited testing laboratories and standards have been used in the development of our state-of-the-art tiles. ASTM International, Underwriters Laboratories Inc., Intertek, Q-Lab, Bodycote Testing Group.

Access Tile®

YOUR ANSWER TO ACCESSIBILITY STANDARDS

Access Tile is the result of responding to a market demand for a better solution to detectable warning tiles at a cost-effective price. With over 20 years of proven manufacturing experience in detectable warnings, Access Tile's improved design features will exceed industry expectations from specifier to installer.

ADA, ADAAG, USDOT, FHWA, CALTRANS TITLE 24 COMPLIANT

Complies with Federal and State requirements

- ADA www.access-board.gov
- ADAAG www.fhwa.dot.gov
- CALTRANS compliant per a88a specification
www.dot.ca.gov/hq/oppd/access/access.htm
- USDOT www.dot.gov
- FHWA www.fhwa.dot.gov

For full industry standards visit: www.accesstile.com/standards

THE NEW INDUSTRY STANDARD

Intelligently designed and precision engineered products that surpass industry and regulated standards in all areas:

- Durability and all-weather resilience
- Structural integrity and UV stability
- Slip resistance
- Cost-effective installation and maintenance
- Speed and ease of installation and replacement

Proud members of:



New innovations from Access Products:

ecoglo®
VISIBLY BETTER

www.ecoglo.us

TRIPSTOP®
Articulating Sidewalk Joint System

www.tripstop.us



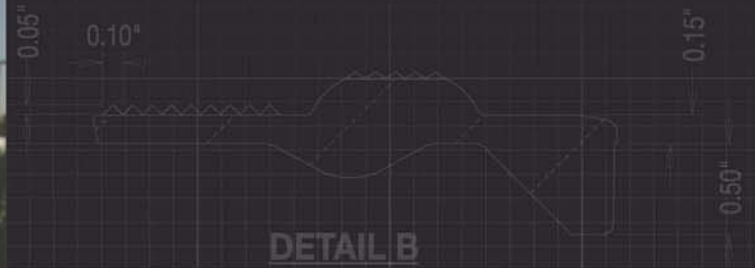
Access Tile is designed, tested, and manufactured in the **U.S.A.**

Engineered for Performance. Designed for the Environment.

Our product has been designed and developed with the Earth in mind. The ingenuity of its unique features and the power of its simple installation means less harm to the environment.

- recyclable and replaceable material
- lighter weight tile construction reduces impact of shipping
- high efficiency manufacturing operation requires reduced energy consumption
- no concrete demolition necessary for replacements significantly reducing harmful emissions
- highest industry durability extends product life and reduces the number of future replacements

As a member of the U.S. Green Building Council, we take responsibility for developing products that help our customers work towards LEEDS certification.



Installs in minutes during concrete finishing stage. Preferred by professional contractors who demand quality installations every time.

Engineered for ultimate performance and optimal cost-effectiveness.



Wide in-line dome configuration facilitates a smooth rolling transition for strollers, wheelchairs and walkers meeting federal and state standards.



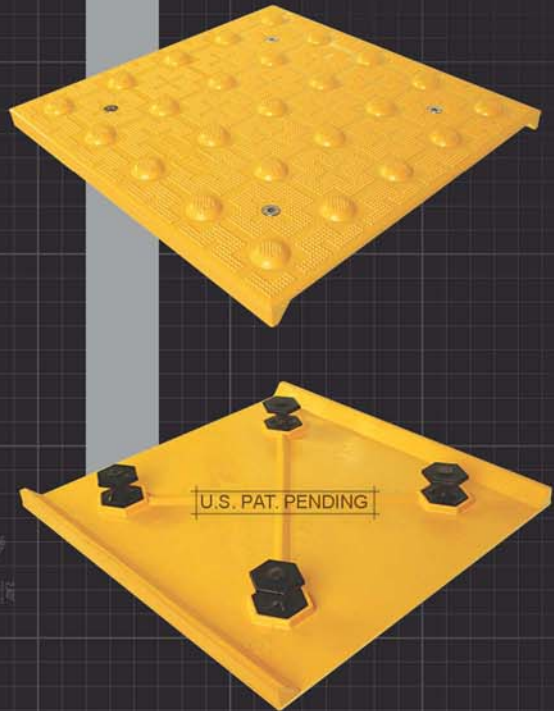
High density, diamond grip™ pyramid micro texture designed for exceptional slip resistance in wet and dry conditions.



intelligent design™ cast in place replaceable

the ultimate in tactile design

Twenty years of tactile design, testing and manufacturing insights have gone into Access Tile's superior engineered detectable warning product. Access Tile boasts the easiest and fastest installation in the industry requiring no concrete demolition and needing only a single fastening device. The replaceability feature of the tile is industry leading due to its simplicity and speed.



ADA COMPLIANCE www.accesstile.com/ada-compliance

- 2.35" center-to-center, in-line dome spacing meets ADA Federal and State requirements
- Truncated dome size and spacing compliant with ADA Federal and State requirements, 0.9" base and 0.45" top diameter
- Fully complies with all ADA and OSHA requirements for surface height transitions to eliminate trip hazards
- Consistent dome spacing when tiles are adjoined (side-by-side or end-to-end)
- Wide in-line dome configuration facilitates a smooth rolling transition for strollers, wheelchairs and walkers

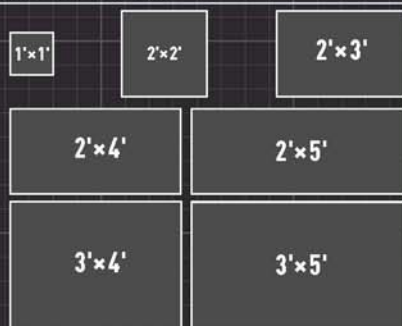
ASTM & UL TESTING www.accesstile.com/specifications

- Tensile Strength ASTM D 638
- Flexural Strength ASTM D 790
- Compressive Strength ASTM D 695
- Accelerated Weathering ASTM G 155
- Slip Resistance ASTM C 1028
- Flame Spread Index ASTM E 84
- Accelerated Aging (freeze thaw) D1037
- Linear Thermal Expansion ASTM D 696-03
- Tile Bond Strength ASTM C 1583

INTELLIGENT DESIGN FEATURES

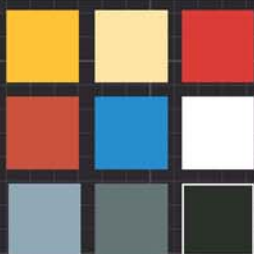
- Installs in minutes during concrete finishing stage
- The replaceability feature of the tile is industry leading due to its simplicity and speed
- Tamper-proof, stainless steel fastener maintains flush interface with walking surface
- Corrosion resistant hexagonal anchors designed to entrap concrete for optimal anchoring
- Anchor and fastener material compositions allow for reliable and secure installations when multiple replacements are necessary
- Large interface between tile and anchor seat area maximizes support at each fastener location
- Multiple fastener locations to ensure full anchoring of tactile surface
- Integral structural spine ensures stiffness and strength
- Tiles shipped with removable protective plastic film to provide a clean surface after installation
- Interactive sizes – all tiles maintain pattern repeat when mounted side-to-side or top-to-bottom

PRODUCT SIZES*



15' RADIUS
CURVE

STANDARD COLORS*



* OTHER CUSTOM SIZES AND COLORS MAY BE AVAILABLE

www.accesstile.com

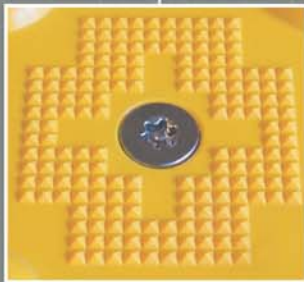
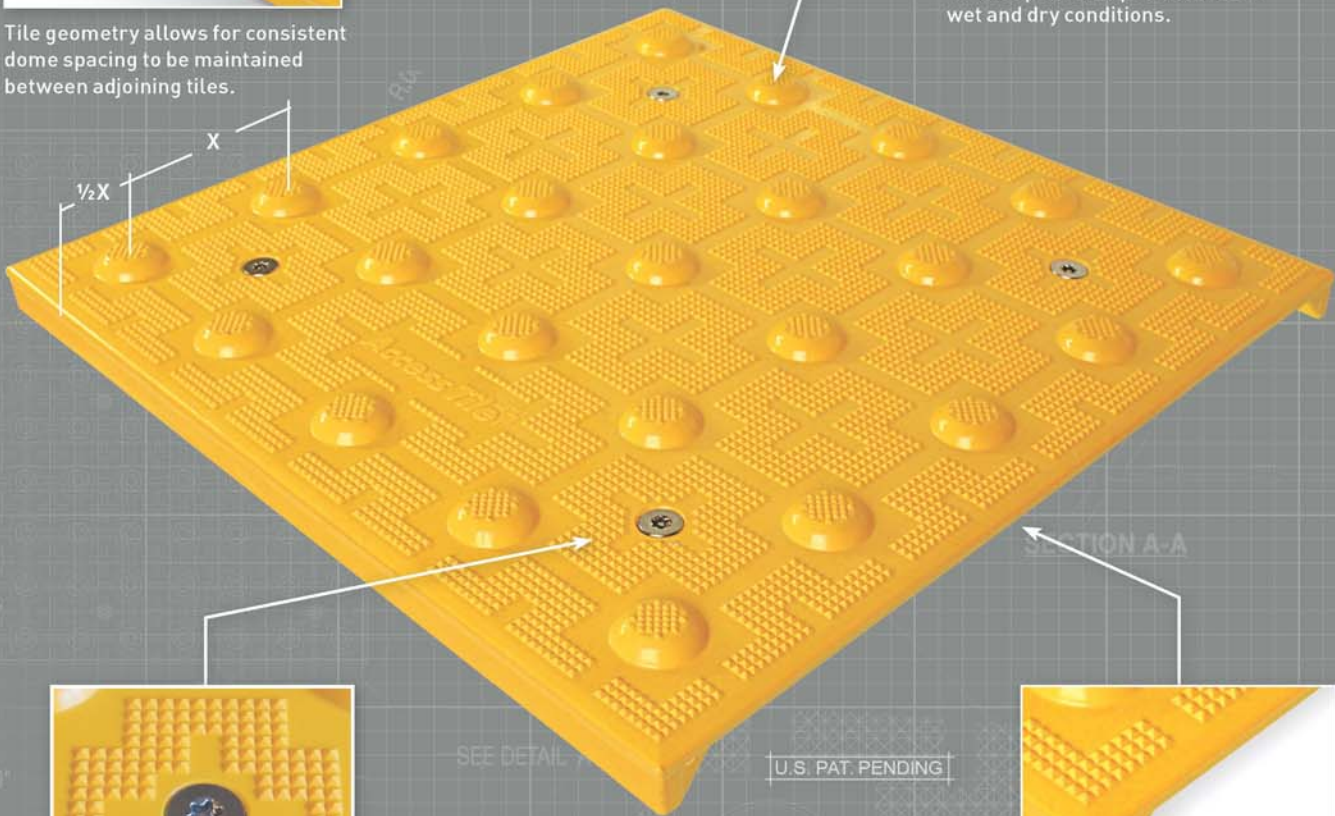
888-679-4022



Tile geometry allows for consistent dome spacing to be maintained between adjoining tiles.



High density, diamond grip™ pyramid micro texture designed for exceptional slip resistance in wet and dry conditions.



Tamper-proof, countersunk, stainless steel fastener sets flush with tile surface and provides for future replaceability.



Open end design eliminates air entrapment during installation to ensure full interface with concrete substructure.

DETAIL E

36.00"

PLAN

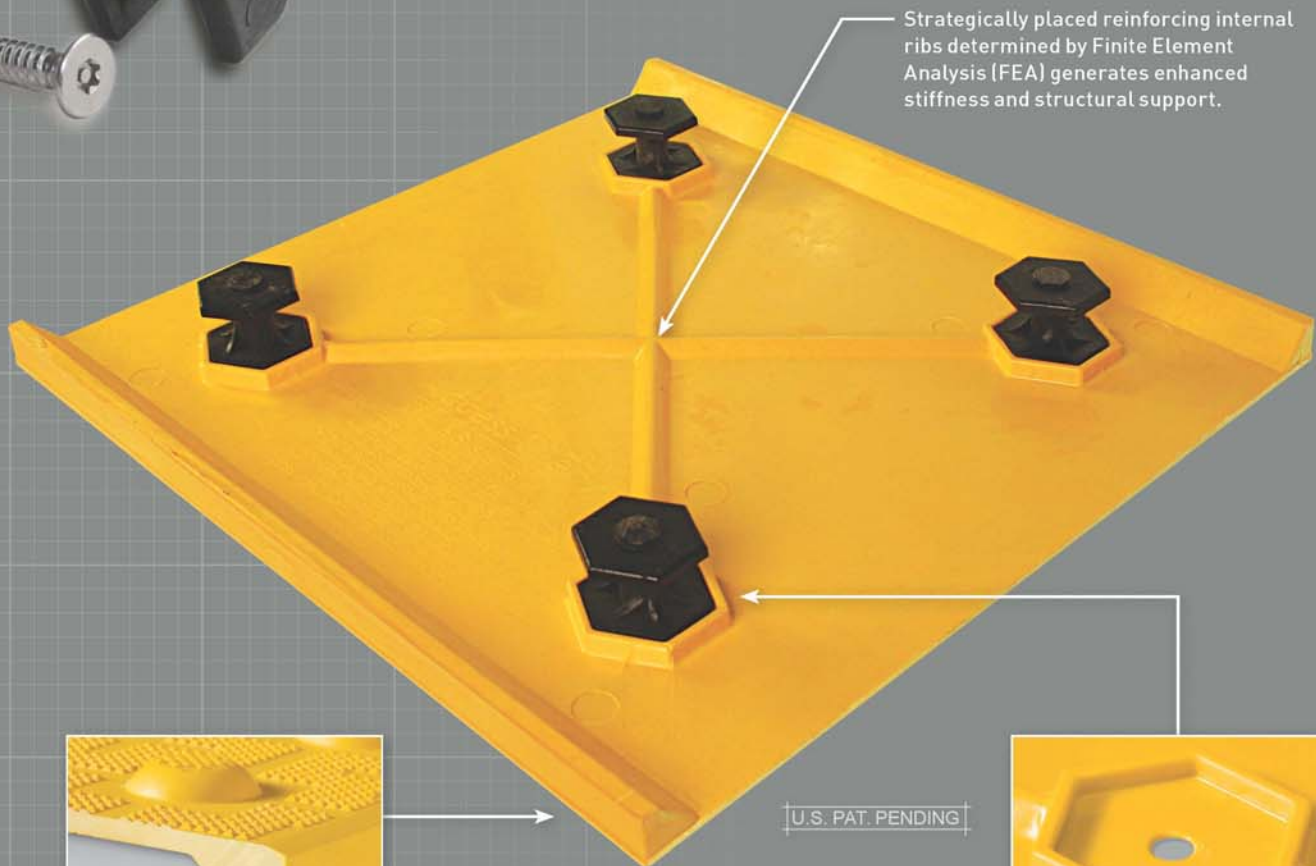
SEE DETAIL

U.S. PAT. PENDING

intelligent design™ cast in place replaceable ADA compliant dome geometry



Nylon composite, corrosion resistant anchor and stainless steel fastener provide unlimited re-installation due to self-threading design.



Strategically placed reinforcing internal ribs determined by Finite Element Analysis (FEA) generates enhanced stiffness and structural support.



Reinforced top and bottom flange determined by Finite Element Analysis (FEA) generates enhanced stiffness and structural support.

U.S. PAT. PENDING



Hexagonal molded forms for permanent interface between tile and anchor system. Fastener/anchor system comes pre-assembled.

easy to install, easy to replace
designed for more environmentally-conscious
installation and replacement

www.accesstile.com

888-679-4022

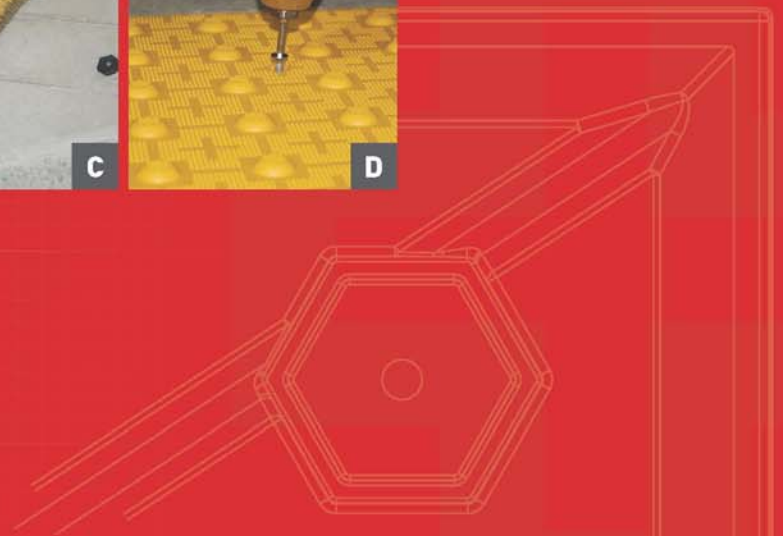
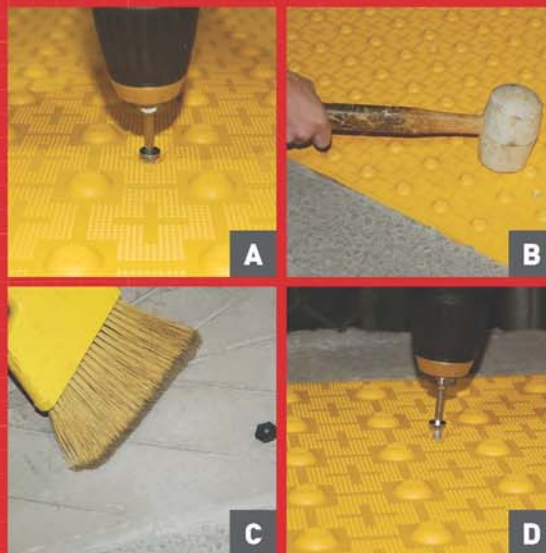
INSTALLATION

- 1 Maintaining a 4-7 slump range, pour and float the concrete.
- 2 Without removing any concrete, place the tile on the curb ramp 6"-8" from the curb line (face of curb).
- 3 Tamp the tile in grid pattern across the top face, embedding the tile into the concrete using a non-marring rubber mallet.
- 4 Create an 1/4" concrete free edge around the perimeter of the tile using a 3/8" radius edging tool then float the concrete around the tile's perimeter using a steel trowel.
- 5 Apply a broom-finish to the curb ramp.
- 6 After the concrete has substantially cured, remove the protective plastic wrap by cutting the plastic with a sharp knife tight to the concrete/tile interface.



REPLACEMENT

- A Unscrew T27 tamper-proof fasteners.
- B Tap perimeter of tile with a rubber mallet to remove bond of tile to concrete.
- C Use a pry bar to pry up edge. Remove all debris from vacant cavity mold. Vacuum/sweep all crevices.
- D Insert replacement tile, gently apply pressure to seat tile in recess. Reinsert tamper-proof fasteners in hex shape concrete anchors.

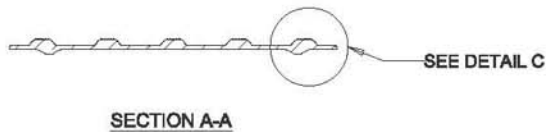
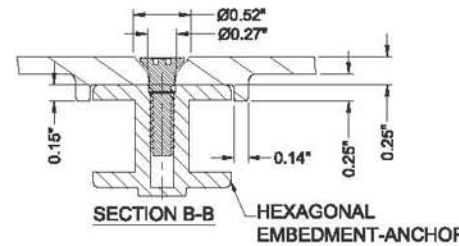
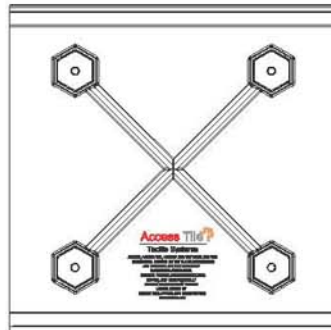
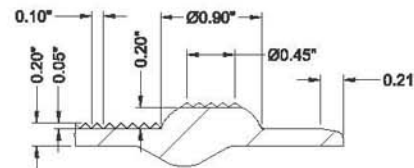
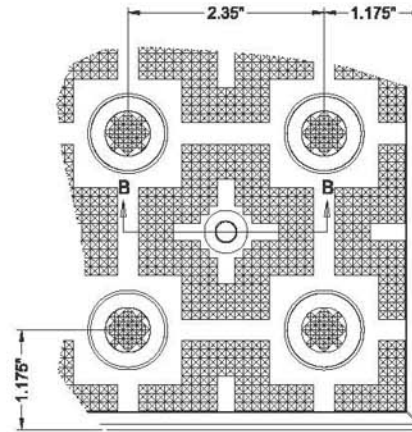
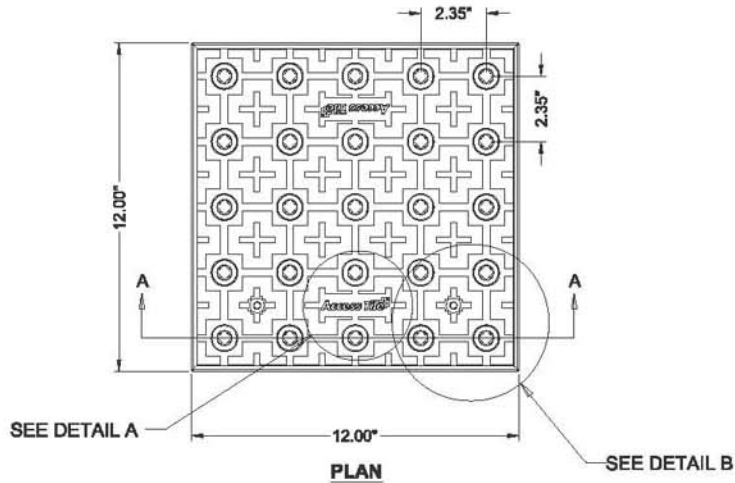


1' x 1'

REPLACEABLE CAST IN PLACE
2.35" DOME SPACING

Access Tile

www.accesstile.com 888-679-4022



www.AccessTile.com

Access Products Inc

© Access Products Inc.
ACCESS, ACCESS TILE, ACCESS + AND THE
TWO AND THREE DIMENSIONAL DESIGNS
ON THE DOMES ARE TRADEMARKS OF
ENGINEERED SYSTEMS INC.
PATENTS PENDING IN THE USA, CANADA
AND INTERNATIONALLY. MANUFACTURED
AND DISTRIBUTED BY
ACCESS WORLD PRODUCTS INC.
www.accesstile.com

© KENNETH E. SZEKELY

MATERIAL LIST

ITEM	DESCRIPTION	PART NO.	QTY
1	ACCESS TILE	ACC-R-1X1	1
2	ANCHOR ASSEMBLY	ACC-R-ANCH	4

NOTE: ANCHOR ARE INCLUDED AND ASSEMBLED ON TILE.

REFERENCE DRAWINGS

DWG. NO.	DESCRIPTION

No.	DATE	REVISION	APPR.

SCALE: 1"=1'-0" U.S.O.
FULL SIZE ONLY

DESIGNED: KES DATE: 10/08/2008

DRAWN: RWD DATE: 10/15/2008

DRAWN: KES

PROJECT MANAGER:

TRADE: DETECTABLE WARNING SURFACE PART NO.: ACC-R-1X1

MATERIAL: POLYMER COMPOSITE

SUBJECT: **ACCESS TILE®**
TRUNCATED DOME, DETECTABLE
WARNING TACTILE SURFACE

PROJECT: **ACCESS TILE®**
TRUNCATED DOME, DETECTABLE
WARNING TACTILE SURFACE
1X1 REPLACEABLE CAST IN PLACE
INLINE DOME TILE DRAWING.

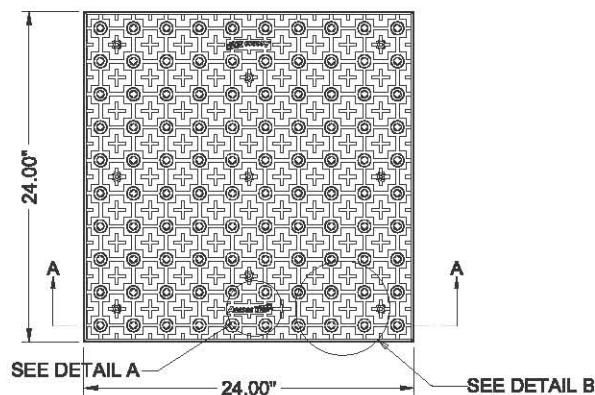
DRAWING NO.: ACC-R-1X1 REV. NO.: 0

2' x 2'

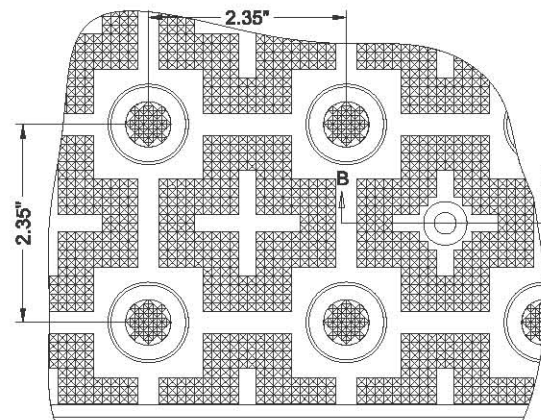
**REPLACEABLE CAST IN PLACE
2.35" DOME SPACING**

Access Tile

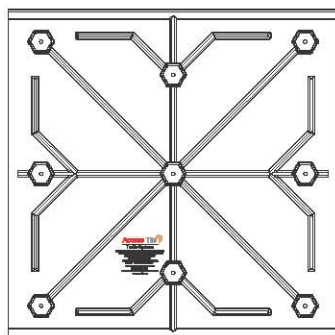
www.accesstile.com 888-679-4022



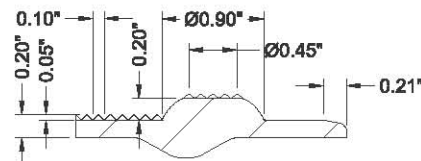
PLAN



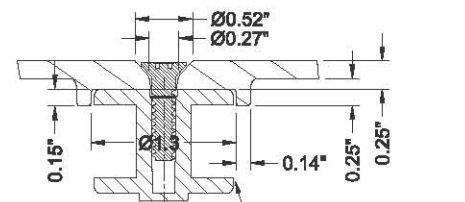
DETAIL B



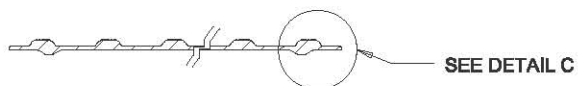
UNDERSIDE VIEW



DETAIL C



SECTION B-B



SECTION A-A



DETAIL A

www.AccessTile.com

Access Products Inc

© Access Products Inc.
ACCESS, ACCESS TILE, ACCESS+ AND THE
TWO AND THREE DIMENSIONAL DESIGNS
ON THE DOMES ARE TRADEMARKS OF
ENGINEERED SYSTEMS INC.
PATENTS PENDING IN THE USA, CANADA
AND INTERNATIONALLY. MANUFACTURED
AND DISTRIBUTED BY
ACCESS WORLD PRODUCTS INC.
www.accesstile.com

© KENNETH E. SZEKELY

MATERIAL LIST

ITEM	DESCRIPTION	PART NO.	QTY
1	ACCESS TILE	ACC-R-2X2	1
2	ANCHOR ASSEMBLY	ACC-R-ANCH	9

NOTE: ANCHOR ARE INCLUDED AND ASSEMBLED ON TILE.

REFERENCE DRAWINGS

DWS. NO.	DESCRIPTION

No.	DATE	REVISION	APPR.

SCALE 1"=1'-0" U.M.O. FULL SIZE ONLY

DESIGNED	KES	DATE	10/09/2008
DRAWN	RWD		10/15/2008
DRAWN	KES		

PROJECT MANAGER

TRADE	DETECTABLE WARNING SURFACE	PART NO.	ACC-R-2X2
-------	----------------------------	----------	-----------

MATERIAL POLYMER COMPOSITE

SUBJECT **ACCESS TILE**

TRUNCATED DOME, DETECTABLE
WARNING TACTILE SURFACE

PROJECT **ACCESS TILE**

TRUNCATED DOME, DETECTABLE
WARNING TACTILE SURFACE
2X2 REPLACEABLE CAST IN PLACE
INLINE DOME TILE DRAWING.

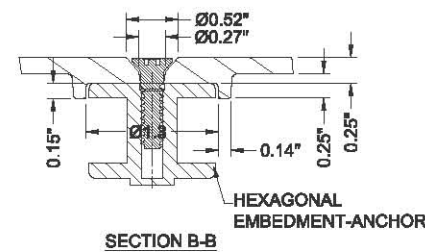
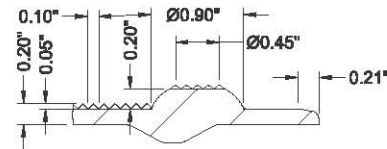
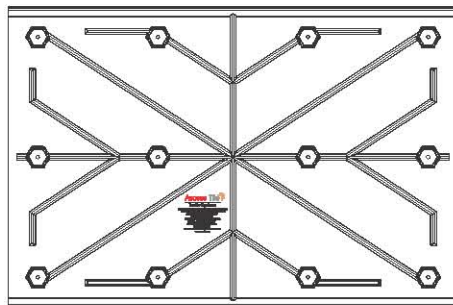
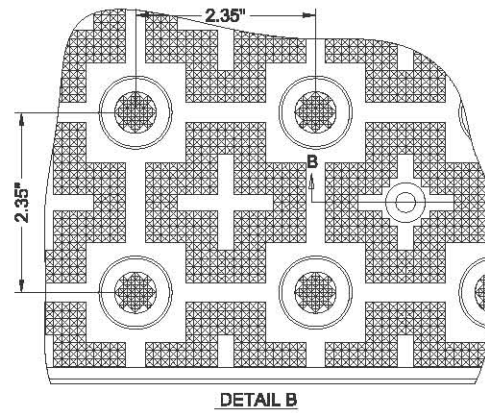
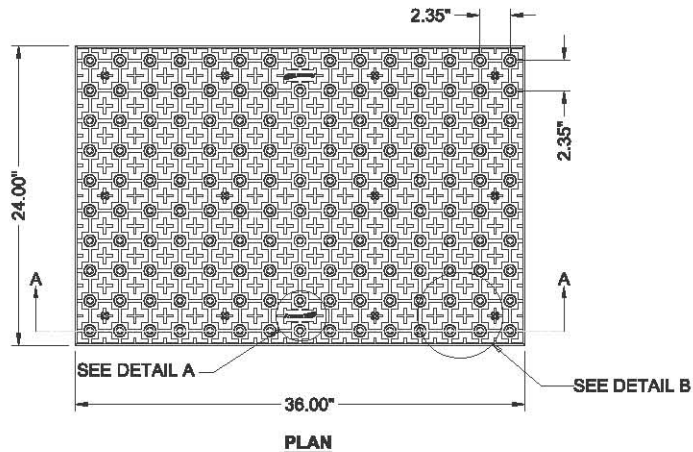
DRAWING NO.	ACC-R-2X2	REV. NO.	0
-------------	-----------	----------	---

2' x 3'

REPLACEABLE CAST IN PLACE 2.35" DOME SPACING

Access Tile

www.accesstile.com 888-679-4022



www.AccessTile.com

Access Products Inc

© Access Products Inc.
ACCESS, ACCESS TILE, ACCESS + AND THE
TWO AND THREE DIMENSIONAL DESIGNS
ON THE DOMES ARE TRADEMARKS OF
ENGINEERED SYSTEMS INC.
PATENTS PENDING IN THE USA, CANADA
AND INTERNATIONALLY. MANUFACTURED
AND DISTRIBUTED BY
ACCESS WORLD PRODUCTS INC.
www.accesstile.com
© KENNETH E. SZEKELY

MATERIAL LIST

ITEM	DESCRIPTION	PART NO.	QTY
1	ACCESS TILE	ACC-R-2X3	1
2	ANCHOR ASSEMBLY	ACC-R-ANCH	12

NOTE: ANCHOR ARE INCLUDED AND ASSEMBLED ON TILE.

REFERENCE DRAWINGS

DWG. NO.	DESCRIPTION

No.	DATE	REVISION	APPR.

SCALE 1"=1'-0" U.I.D.
FULL SIZE ONLY 0 3 6 9 12 15

DESIGNED	KES	DATE	10/09/2008
DRAWN	RWO		10/15/2008
DRAWN	KES		

PROJECT MANAGER

TRADE	DETECTABLE WARNING SURFACE	PART NO.	ACC-R-2X3
-------	----------------------------	----------	-----------

MATERIAL POLYMER COMPOSITE

SUBJECT **ACCESS TILE**
TRUNCATED DOME, DETECTABLE
WARNING TACTILE SURFACE

PROJECT **ACCESS TILE**
TRUNCATED DOME, DETECTABLE
WARNING TACTILE SURFACE
2X3 REPLACEABLE CAST IN PLACE
INLINE DOME TILE DRAWING.

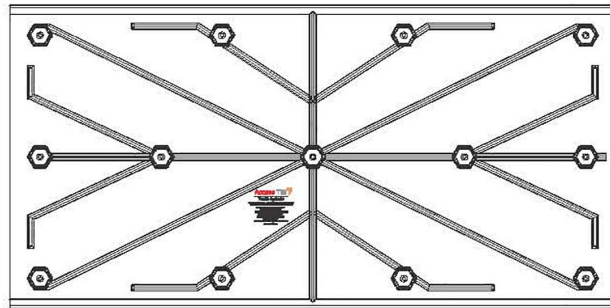
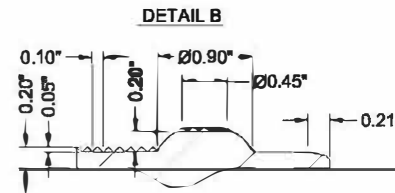
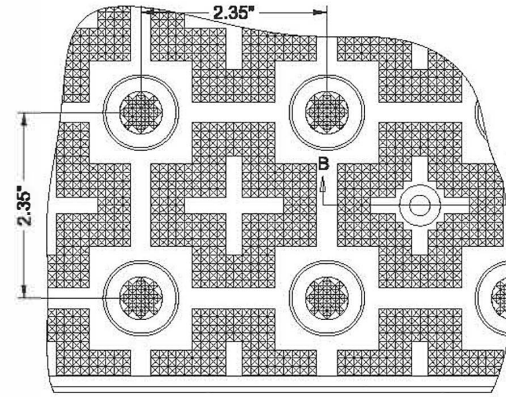
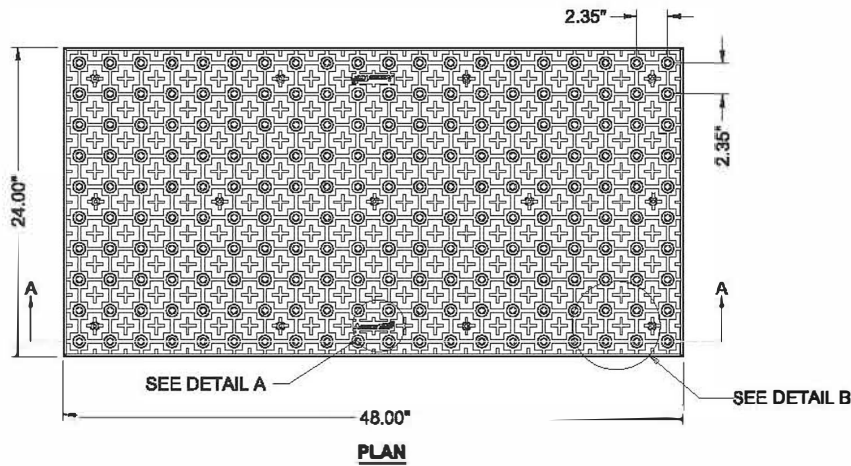
DRAWING NO.	ACC-R-2X3	REV. NO.	0
-------------	-----------	----------	---

2' x 4'

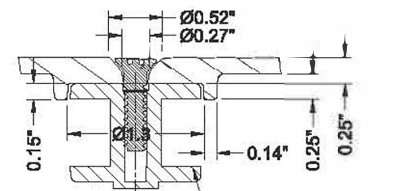
**REPLACEABLE CAST IN PLACE
2.35" DOME SPACING**

Access Tile

www.accesstile.com 888-679-4022



DETAIL C



SECTION B-B



SECTION A-A



DETAIL A

www.AccessTile.com

Access Products Inc

© Access Products Inc.
ACCESS, ACCESS TILE, ACCESS + AND THE
TWO AND THREE DIMENSIONAL DESIGNS
ON THE DOMES ARE TRADEMARKS OF
ENGINEERED SYSTEMS INC.
PATENTS PENDING IN THE USA, CANADA
AND INTERNATIONALLY. MANUFACTURED
AND DISTRIBUTED BY
ACCESS WORLD PRODUCTS INC.
www.accesstile.com
© KENNETH E. SZEKELY

MATERIAL LIST

ITEM	DESCRIPTION	PART NO.	QTY
1	ACCESS TILE	ACC-R-2X4	1
2	ANCHOR ASSEMBLY	ACC-R-ANCH	13

**NOTE: ANCHOR ARE INCLUDED AND ASSEMBLED
ON TILE.**

REFERENCE DRAWINGS

DWG. NO.	DESCRIPTION

No.	DATE	REVISION	APPR.

SCALE
1"=1'-0" U.S.D.
FULL SIZE ONLY

DESIGNED	DATE
KES	10/09/2008
DRAWN	RWD
DRAWN	KES

PROJECT MANAGER	PART NO.
	ACC-R-2X4

ACCESS TILE[®]
TRUNCATED DOME, DETECTABLE
WARNING TACTILE SURFACE

ACCESS TILE[®]
TRUNCATED DOME, DETECTABLE
WARNING TACTILE SURFACE
2X4 REPLACEABLE CAST IN PLACE
INLINE DOME TILE DRAWING.

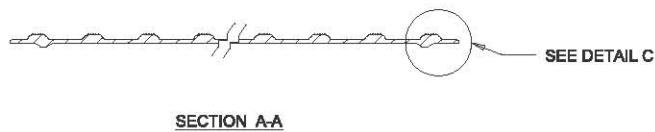
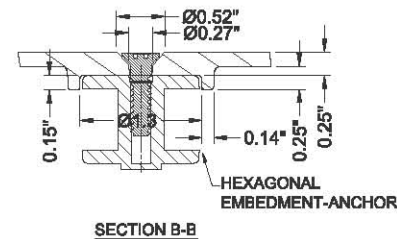
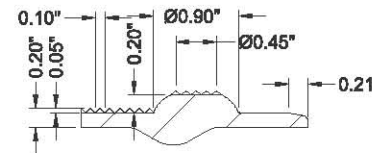
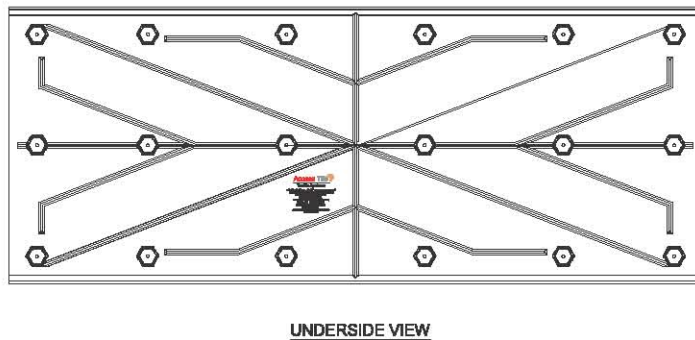
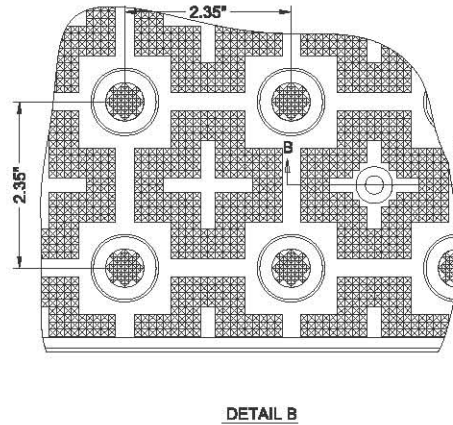
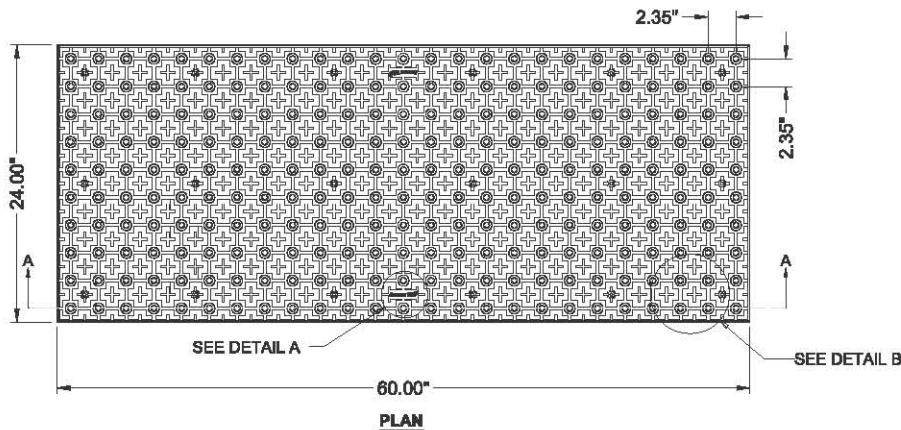
DRAWING NO.	REV. NO.
ACC-R-2X4	0

2' x 5'

REPLACEABLE CAST IN PLACE 2.35" DOME SPACING

Access Tile

www.accesstile.com 888-679-4022



www.AccessTile.com

Access Products Inc

© Access Products Inc.
ACCESS, ACCESS TILE, ACCESS + AND THE
TWO AND THREE DIMENSIONAL DESIGNS
ON THE DOMES ARE TRADEMARKS OF
ENGINEERED SYSTEMS INC.
PATENTS PENDING IN THE USA, CANADA
AND INTERNATIONALLY. MANUFACTURED
AND DISTRIBUTED BY
ACCESS WORLD PRODUCTS INC.
www.accesstile.com
© KENNETH E. SZEKELY

MATERIAL LIST

ITEM	DESCRIPTION	PART NO.	QTY
1	ACCESS TILE	ACC-R-2X5	1
2	ANCHOR ASSEMBLY	ACC-R-ANCH	15

NOTE: ANCHOR ARE INCLUDED AND ASSEMBLED ON TILE.

REFERENCE DRAWINGS

DWG. NO.	DESCRIPTION

No.	DATE	REVISION	APPR.

SCALE 1"=1'-0" U.I.D.
FULL SIZE ONLY 0 3 6 9 12 15

DESIGNED	KES	DATE	10/09/2008
DRAWN	RWO		10/15/2008
DRAWN	KES		

PROJECT MANAGER	
TRADE	PART NO.
DETECTABLE WARNING SURFACE	ACC-R-2X5

MATERIAL: POLYMER COMPOSITE
SUBJECT: **ACCESS TILE**
TRUNCATED DOME, DETECTABLE
WARNING TACTILE SURFACE

PROJECT: **ACCESS TILE**
TRUNCATED DOME, DETECTABLE
WARNING TACTILE SURFACE
2X5 REPLACEABLE CAST IN PLACE
INLINE DOME TILE DRAWING.

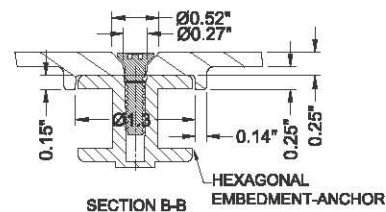
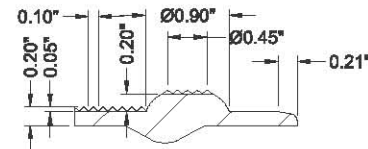
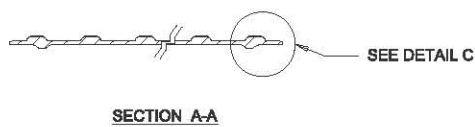
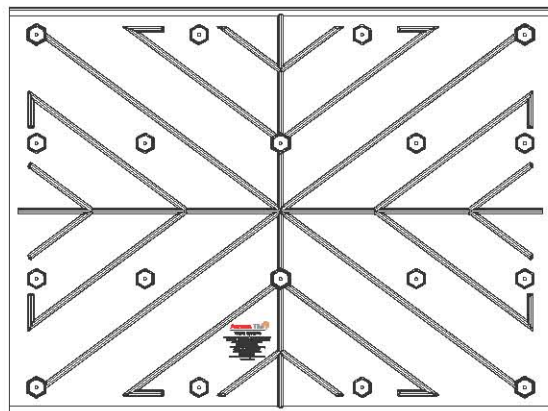
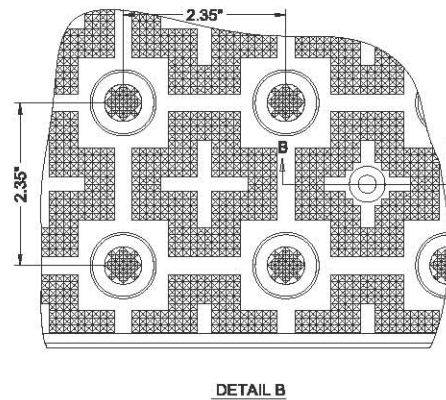
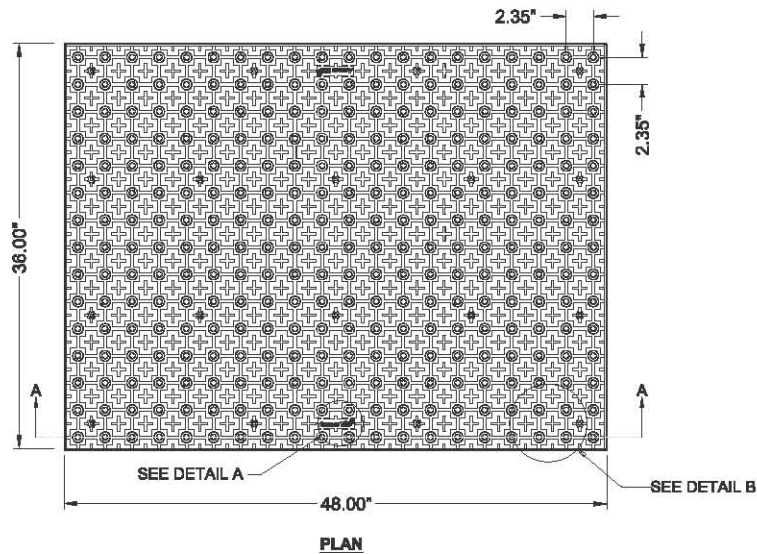
DRAWING NO.	REV. NO.
ACC-R-2X5	0

3' x 4'

REPLACEABLE CAST IN PLACE 2.35" DOME SPACING

Access Tile

www.accesstile.com 888-679-4022



DETAIL A

www.AccessTile.com

Access Products Inc

© Access Products Inc.
ACCESS, ACCESS TILE, ACCESS + AND THE
TWO AND THREE DIMENSIONAL DESIGNS
ON THE DOMES ARE TRADEMARKS OF
ENGINEERED SYSTEMS INC.
PATENTS PENDING IN THE USA, CANADA
AND INTERNATIONALLY. MANUFACTURED
AND DISTRIBUTED BY
ACCESS WORLD PRODUCTS INC.
www.accesstile.com
© KENNETH E. SZEKELY

MATERIAL LIST

ITEM	DESCRIPTION	PART NO.	QTY
1	ACCESS TILE	ACC-R-3X4	1
2	ANCHOR ASSEMBLY	ACC-R-ANCH	18

NOTE: ANCHOR ARE INCLUDED AND ASSEMBLED ON TILE.

REFERENCE DRAWINGS

DWG. NO.	DESCRIPTION

No.	DATE	REVISION	APPR.

SCALE 1"=1'-0" U.S.D. FULL SIZE ONLY

DESIGNED	DATE
KES	10/09/2006
DRAWN	DATE
RWC	10/15/2008
DRAWN	DATE
KES	

PROJECT MANAGER

TRADE	PART NO.
DETECTABLE WARNING SURFACE	ACC-R-3X4

MATERIAL POLYMER COMPOSITE

SUBJECT **ACCESS TILE**
TRUNCATED DOME, DETECTABLE
WARNING TACTILE SURFACE

PROJECT **ACCESS TILE**
TRUNCATED DOME, DETECTABLE
WARNING TACTILE SURFACE
3X4 REPLACEABLE CAST IN PLACE
INLINE DOME TILE DRAWING.

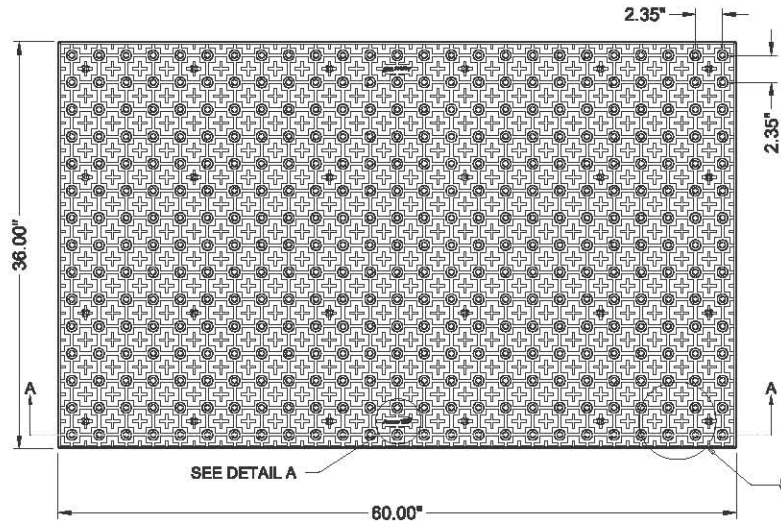
DRAWING NO.	REV. NO.
ACC-R-3X4	0

3' x 5'

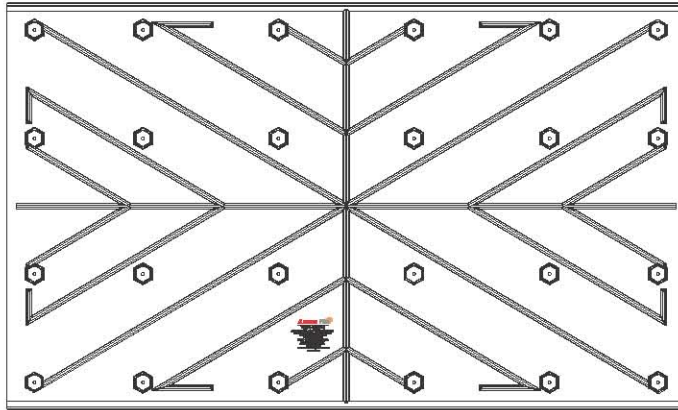
REPLACEABLE CAST IN PLACE 2.35" DOME SPACING

Access Tile

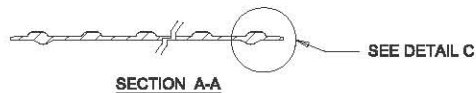
www.accesstile.com 888-679-4022



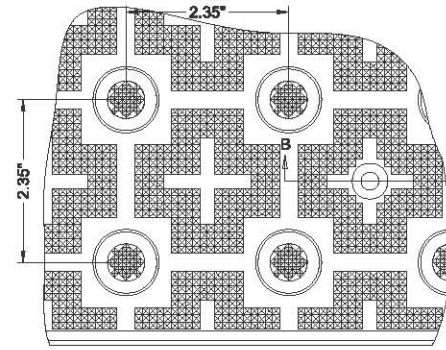
PLAN



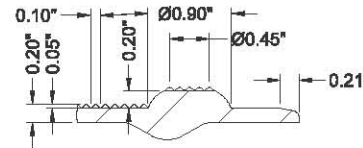
UNDERSIDE VIEW



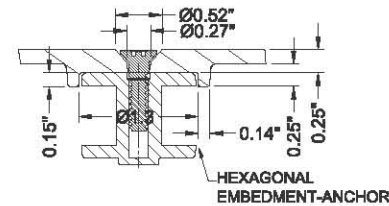
SECTION A-A



DETAIL B



DETAIL C



SECTION B-B



DETAIL A

www.AccessTile.com

Access Products Inc

© Access Products Inc. ACCESS, ACCESS TILE, ACCESS + AND THE TWO AND THREE DIMENSIONAL DESIGNS ON THE DOMES ARE TRADEMARKS OF ENGINEERED SYSTEMS INC. PATENTS PENDING IN THE USA, CANADA AND INTERNATIONALLY. MANUFACTURED AND DISTRIBUTED BY ACCESS WORLD PRODUCTS INC. www.accesstile.com
 © KENNETH E. SZEKELY

MATERIAL LIST

ITEM	DESCRIPTION	PART NO.	QTY
1	ACCESS TILE	ACC-R-3X5	1
2	ANCHOR ASSEMBLY	ACC-R-ANCH	24

NOTE: ANCHOR ARE INCLUDED AND ASSEMBLED ON TILE.

REFERENCE DRAWINGS

DWS. NO.	DESCRIPTION

No.	DATE	REVISION	APPR.

SCALE 1"=1'-0" U.N.D. FULL SIZE ONLY

DESIGNED	KES	DATE	10/09/2008
DRAWN	RWC	DATE	10/16/2008
DRAWN	KES		

PROJECT MANAGER

TRADE	DETECTABLE WARNING SURFACE	PART NO.	ACC-R-3X5
-------	----------------------------	----------	-----------

MATERIAL POLYMER COMPOSITE

SUBJECT **ACCESS TILE**
 TRUNCATED DOME, DETECTABLE WARNING TACTILE SURFACE

PROJECT **ACCESS TILE**
 TRUNCATED DOME, DETECTABLE WARNING TACTILE SURFACE
 3X5 REPLACEABLE CAST IN PLACE
 INLINE DOME TILE DRAWING.

DRAWING NO.	ACC-R-3X5	REV. NO.	0
-------------	-----------	----------	---

KNOWING THE LAW

Federal

The Americans with Disabilities Act (ADA) recognizes and protects the civil rights of people with disabilities. To ensure that buildings and facilities are accessible to and usable by people with disabilities, the ADA establishes accessibility requirements. One of those requirements is for the installation of detectable warning surfaces as indicated by the following sections of the ADA Accessibility Guidelines (ADAAG):

R304.1 General. Detectable warnings shall consist of a surface of truncated domes aligned in a square or radial grid pattern and shall comply with R304.

R304.1.1 Dome Size. Truncated domes in a detectable warning surface shall have a base diameter of 23 mm (0.9 in) minimum to 36 mm (1.4 in) maximum, a top diameter of 50 percent of the base diameter minimum to 65 percent of the base diameter maximum, and a height of 5 mm (0.2 in).

R304.1.2 Dome Spacing. Truncated domes in a detectable warning surface shall have a center-to-center spacing of 41 mm (1.6 in) minimum and 61 mm (2.4 in) maximum, and a base-to-base spacing of 17 mm (0.65 in) minimum, measured between the most adjacent domes.

R304.1.3 Contrast. Detectable warning surfaces shall contrast visually with adjacent gutter, street or highway, or walkway surface, either light-on-dark or dark-on-light.

R304.1.4 Size. Detectable warning surfaces shall extend 610 mm (24 in) minimum in the direction of travel and the full width of the curb ramp (exclusive of flares), the landing, or the blended transition.

R304.2 Location and Alignment

R304.2.1 Perpendicular Curb Ramps. Where both ends of the bottom grade break complying with R303.3.4 are 1.5 m (5.0 ft) or less from the back of curb, the detectable warning shall be located on the ramp surface at the bottom grade break. Where either end of the bottom grade break is more than 1.5 m (5.0 ft) from the back of curb, the detectable warning shall be located on the lower landing.

R304.2.2 Landings and Blended Transitions. The detectable warning shall be located on the landing or blended transition at the back of curb.

R304.2.3 Alignment. The rows of truncated domes in a detectable warning surface shall be aligned to be perpendicular or radial to the grade break between the ramp, landing, or blended transition and the street.

California (CALTRANS)

Excerpts from the 2001 California Building Code, California Code of Regulations, Title 24, Part 2, Volume 1, California Building Standards Commission

1102A.3-C Detectable warning. Only approved DSA/AC detectable warning products and directional surfaces shall be installed as provided in the California Code of Regulations (CCR), Title 24, Part 1, Articles 2,3, and 4.

1117A.4.7 Detectable warnings. A curb ramp shall have a detectable warning that extends the full width and depth of the curb ramp when the ramp slope is less than 1 unit vertical in 15 units horizontal (6.7% slope).

1133B.8.3 Detectable warnings at transit boarding platforms. Transit boarding platforms shall have a detectable warning texture extending the full length of the loading area.

113B.8.4 Detectable directional texture at boarding platforms. At transit boarding platforms, the pedestrian access shall be identified with a detectable directional texture.

UNDERSTANDING COMPLIANCE

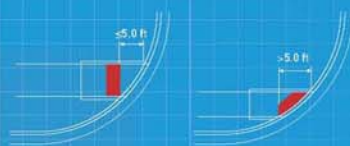


R304.1.4 Curb Ramp and Size of Detectable Warning Area

- Full width of ramp excluding flares
- 24" minimum in the direction of travel



R304.2.1 Perpendicular Curb Ramps



R304.2.2 Landings and Blended Transitions

- Located on landing or blended transition at back of curb
- 36" in the direction of travel



R305.4 Medians and Pedestrian Refuge Islands

- Shall have detectable warnings that comply with R304 at ramps and blended transitions
- At cut through islands at curb line in-line with face of curb and shall be separated by a 2 foot minimum length of walkway without detectable warnings



R304.2.3 Rail Crossing

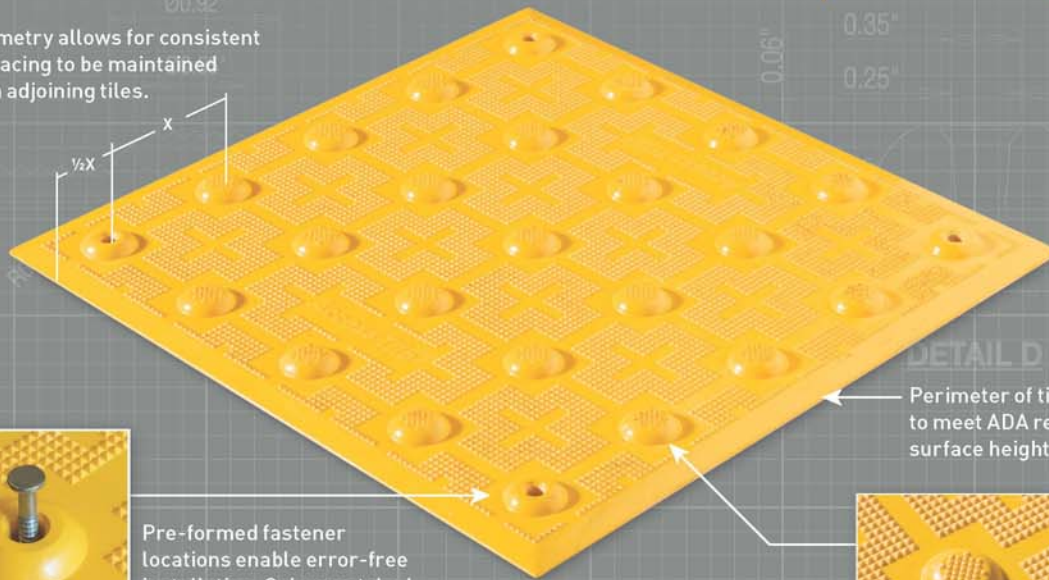
- Edge nearest rail crossing is 6 feet minimum and 15 feet maximum from center line of the nearest rail
- Truncated domes shall be aligned to be parallel with the direction of wheelchair travel



intelligent design™ surface applied

ADA compliant dome geometry

Tile geometry allows for consistent dome spacing to be maintained between adjoining tiles.



Pre-formed fastener locations enable error-free installation. Color-matched Tek™ Anchor with stainless steel fastener is supplied with tile.



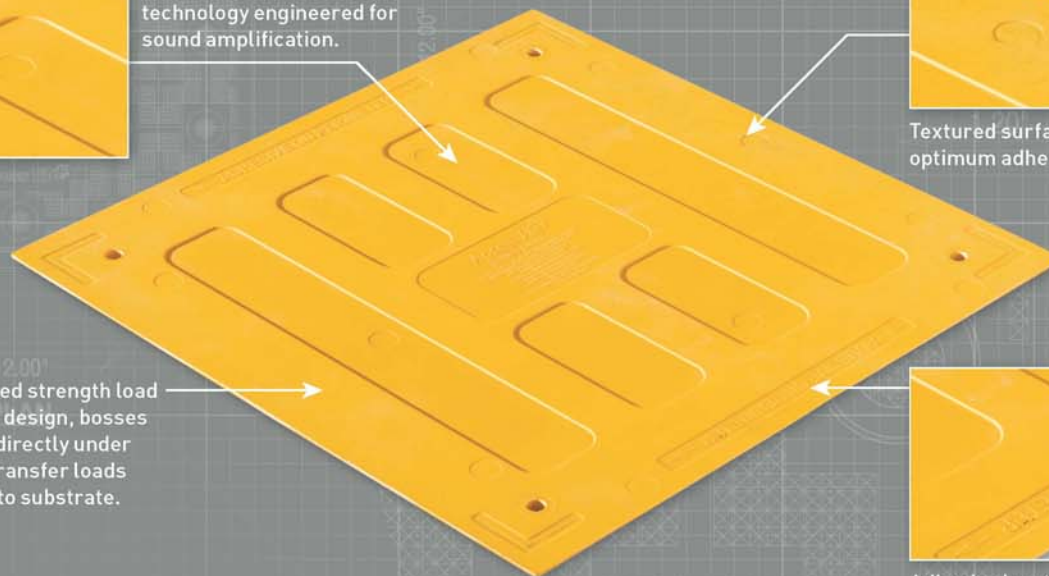
High density, diamond grip™ pyramid micro texture designed for exceptional slip resistance in wet and dry conditions.



Audible detectability technology engineered for sound amplification.



Textured surface to allow optimum adhesive bond.



Maximized strength load transfer design, bosses located directly under domes transfer loads directly to substrate.



Adhesive location identified on reverse side of tile for easy, error-free installation.

easy to install, easy to replace
designed for more environmentally-conscious
installation and replacement

INSTALLATION



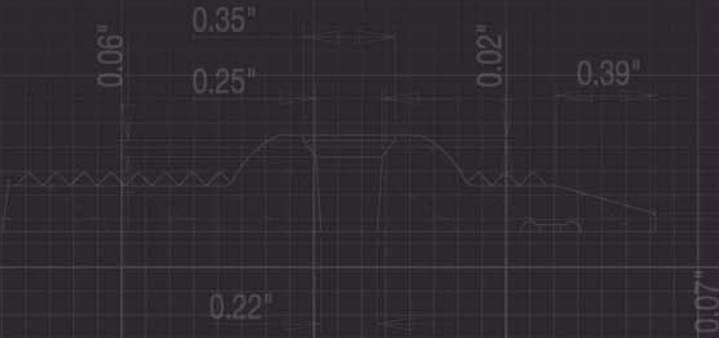
- 1 Place the tile on the designated location and trace the perimeter with a thin permanent marker.
- 2 Set the tile aside and using a 4" diamond cup grinder, scour the concrete within the marked location and in correspondence with the location requiring adhesive as indicated in backside of tile.
- 3 Clear away the dust with a leaf blower then clean the back of the tile and the concrete with rag soaked in acetone.
- 4 Apply adhesive to back of tile (as indicated on tile). The first bead should be applied thin, 1/2" from the perimeter edge and a second thicker bead applied 1" inside of the first.
- 5 Set the tile true and square to the curb ramp and press down firmly.
- 6 While stepping down on either side of pre-formed hole, drill down 3" into concrete slab using a hammer drill and the recommended 1/4" diameter carbide drill bit.
- 7 While still applying pressure, remove the dust and any adhesive that surfaces and carefully set the supplied color-matched Tek™ Anchor with a plastic-tipped hammer. Repeat steps 6 & 7 while working across the tile from one end until all pre-formed fastener locations are completed.
- 8 Clean the perimeter of the tile and the immediately surrounding concrete with acetone making sure to remove any adhesive that has escaped from beneath the tile. Apply and smooth sealant around perimeter of tile.



TACTILE Bond & Seal
Minimum of 1 tube for 10ft²

Additional tube required to seal perimeter **SEE DETAIL C**
Order additional tubes using Part # TBS-010

SECTION A-A



Low profile chamfered perimeter edge for smooth transition from surrounding walking surface to tile surface.

Engineered for ultimate performance and optimal cost-effectiveness.



Wide in-line dome configuration facilitates a smooth rolling transition for strollers, wheelchairs and walkers meeting federal and state standards.



High density, diamond grip™ pyramid micro texture designed for exceptional slip resistance in wet and dry conditions.



1.20"



SURFACE APPLIED

the most innovative retrofit system

Access Tile's Surface Applied tile is engineered to successfully upgrade any existing surface to comply with Federally mandated detectable warning requirements.

ADA COMPLIANCE

www.accesstile.com/ada-compliance

- 2.35" center-to-center, in-line dome spacing meets ADA Federal and State requirements
- Truncated dome size and spacing compliant with ADA Federal and State requirements, 0.9" base and 0.45" top diameter
- Fully complies with all ADA and OSHA requirements for surface height transitions to eliminate trip hazards
- Consistent dome spacing when tiles are adjoined (side-by-side or end-to-end)
- Wide in-line dome configuration facilitates a smooth rolling transition for strollers, wheelchairs and walkers

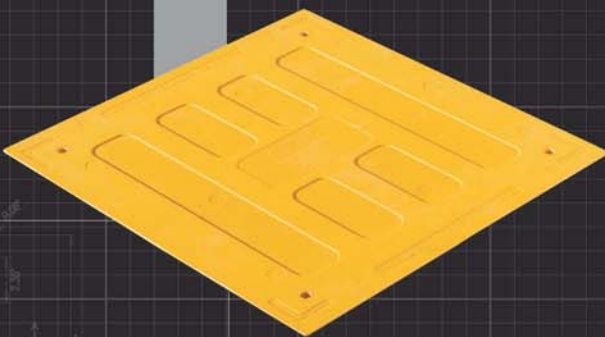
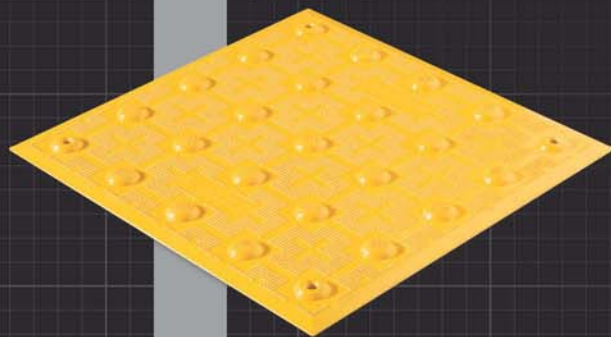
ASTM & UL TESTING

www.accesstile.com/specifications

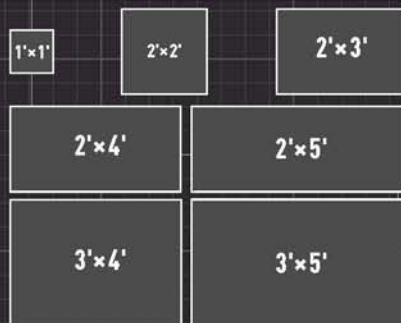
- Tensile Strength ASTM D 638
- Flexural Strength ASTM D 790
- Compressive Strength ASTM D 695
- Accelerated Weathering ASTM G 155
- Slip Resistance ASTM C 1028
- Flame Spread Index ASTM E 84
- Accelerated Aging (freeze thaw) D1037
- Linear Thermal Expansion ASTM D 696-03
- Tile Bond Strength ASTM C1583

INTELLIGENT DESIGN FEATURES

- Audible detectability technology engineered for sound amplification
- Engineered load transfer design with bosses located directly under domes transfer loads directly to substrate
- Bevelled perimeter edge meets ADA vertical displacement requirements
- Strategically placed pre-formed fastener hole locations enhance installation integrity and provide easy installation
- Tiles shipped with color-matched fasteners
- Adhesive location identified on reverse side of tile for easy, error-free installation
- Tactile Bond&Seal is available through all our authorized distributors. The system is designed and tested to be both a structural adhesive and perimeter edge sealant.
- Interactive sizes – all tiles maintain pattern repeat when mounted side-to-side or top-to-bottom

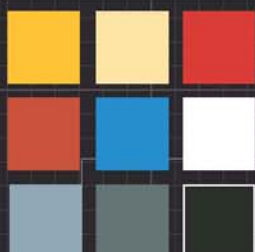


PRODUCT SIZES*



15' RADIUS CURVE

STANDARD COLORS



* OTHER CUSTOM SIZES AND COLORS MAY BE AVAILABLE

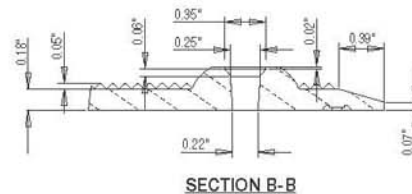
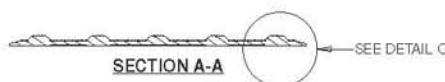
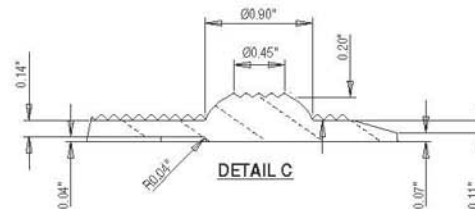
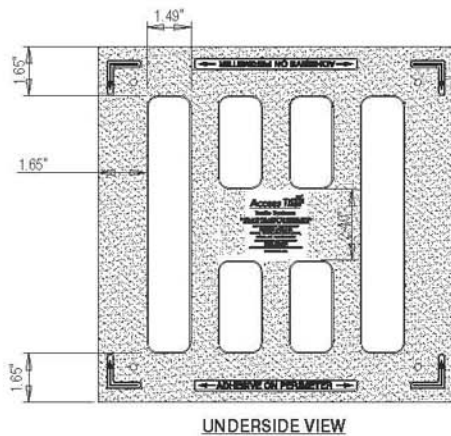
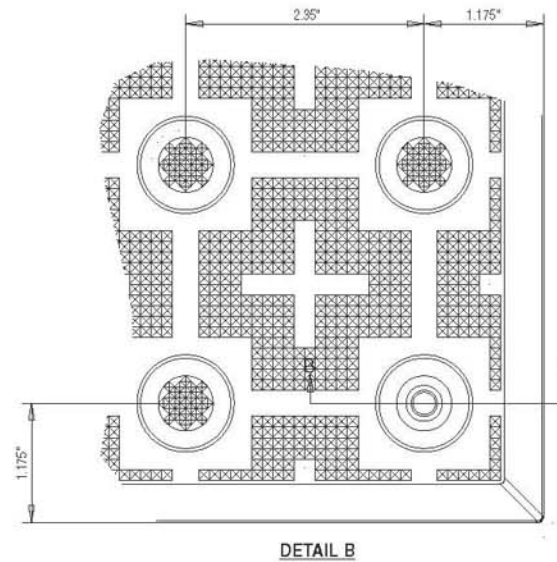
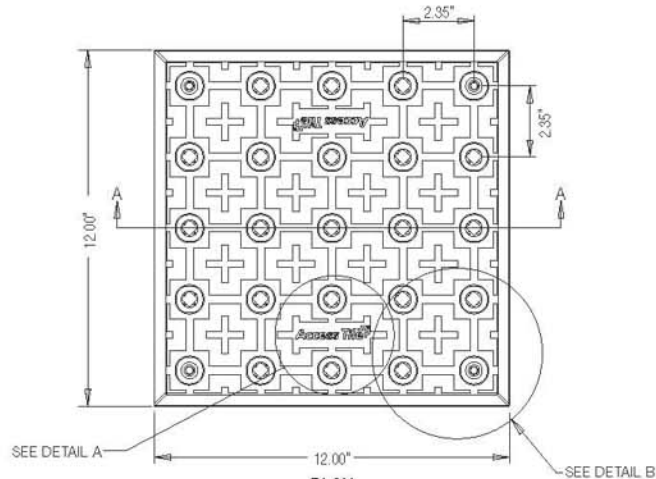
1' x 1'

SURFACE APPLIED | Upgrade existing concrete to comply with ADAAG detectable warning.

2.35" DOME SPACING



www.accesstile.com 888-679-4022



www.AccessTile.com

Access Products Inc

© Access Products Inc.
ACCESS, ACCESS TILE, ACCESS AND THE THREE AND TWO DIMENSIONAL DESIGNS ON THE TILE BETWEEN DOMES AND ON DOMES ARE TRADEMARKS OF ENGINEERED SYSTEMS INC. PATENTS PENDING IN THE UNITED STATES, CANADA AND INTERNATIONALLY. MANUFACTURED AND DISTRIBUTED UNDER LICENSE BY ACCESS WORLD PRODUCTS INCORPORATED www.accesstile.com
© KENNETH E. SZEKELY

MATERIAL LIST

ITEM	DESCRIPTION	PART NO.	QTY
1	ACCESS TILE	ACC-S-12X12-XX	1
2	TEK ANCHOR	ACC-FAST-XX	4

REFERENCE DRAWINGS

DWG. NO.	DESCRIPTION

NO.	DATE	REVISION	APP.

SCALE: 1"=1'-0" U.S. ONLY. FULL SIZE ONLY.

DESIGNED: KES DATE: 10/09/2008

DRAWN: RWO DATE: 10/15/2008

CHECKED: KES

NOTE: STANDARD TOLERANCE = 0.005"

TITLE: DETECTABLE WARNING SURFACE PART NO.: ACC-S-12X12

MATERIAL: POLYMER COMPOSITE

SUBJECT: **ACCESS TILE®**

TRUNCATED DOME, DETECTABLE

WARNING TACTILE SURFACE

PROJECT: **ACCESS TILE®**

TRUNCATED DOME, DETECTABLE

WARNING TACTILE SURFACE

1'X1' SURFACE APPLIED

INLINE DOME TILE DRAWING.

DRAWING NO.: ACC-S-12X12

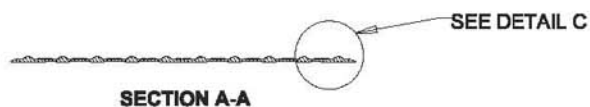
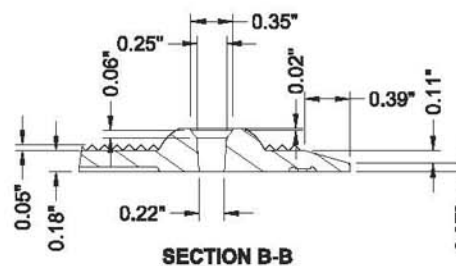
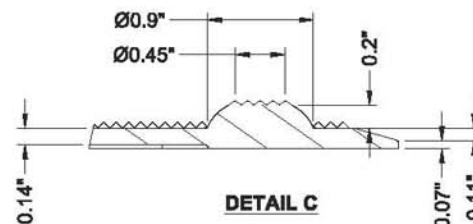
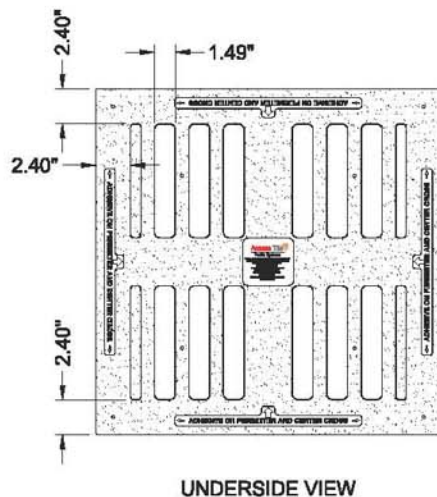
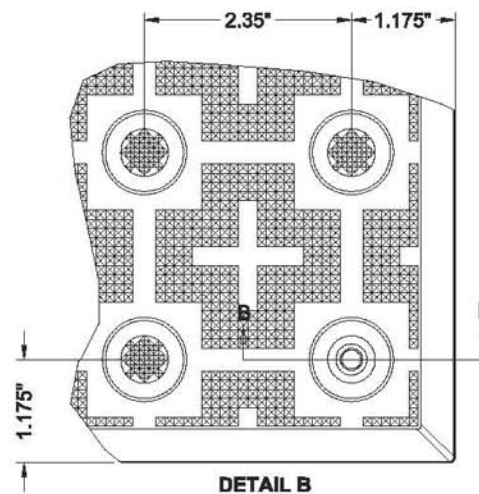
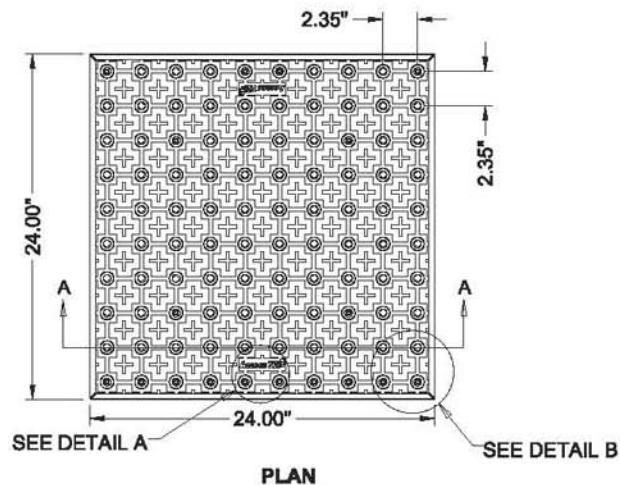
REV. NO.: 0

2' x 2'

SURFACE APPLIED | Upgrade existing concrete to comply with ADAAG detectable warning. 2.35" DOME SPACING

Access Tile

www.accesstile.com 888-679-4022



www.AccessTile.com

Access Products Inc

© Access Products Inc.
ACCESS, ACCESS TILE, ACCESS AND THE THREE AND TWO DIMENSIONAL DESIGNS ON THE TILE BETWEEN DOMES AND ON DOMES ARE TRADEMARKS OF ENGINEERED BY'S ITEMS INC. PATENTS PENDING IN THE UNITED STATES, CANADA AND INTERNATIONALLY MANUFACTURED AND DISTRIBUTED UNDER LICENSE BY ACCESS WORLD PRODUCTS INCORPORATED www.accesstile.com © KENNETH E. SZEKELY

MATERIAL LIST

ITEM	DESCRIPTION	PART NO.	QTY
1	ACCESS TILE	ACC-S-2X2	1
2	Tek™ ANCHOR	ACC-S-ANCH	8
3	TACTILE BOND AND SEAL	TBS-010	1 ea

NOTE: FASTENERS AND 1 TUBE OF TACTILE BOND AND SEAL ARE INCLUDED WITH TILE

REFERENCE DRAWINGS

DWG. NO.	DESCRIPTION

No.	DATE	REVISION	APPR.

SCALE 1"=1'-0" U.S.I.D. FULL SIZE ONLY

DESIGNED	KES	DATE	10/09/2008
DRAWN	RWD	DATE	10/15/2008
CHECKED	KES		

PROJECT MANAGER

TRADE	DETECTABLE WARNING SURFACE	PART NO.	ACC-S-2X2
-------	----------------------------	----------	-----------

MATERIAL POLYMER COMPOSITE

SUBJECT **ACCESS TILE**®
TRUNCATED DOME, DETECTABLE WARNING TACTILE SURFACE

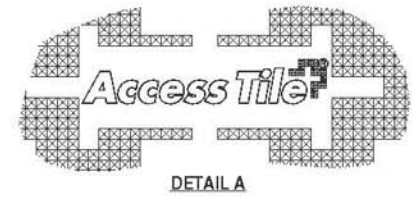
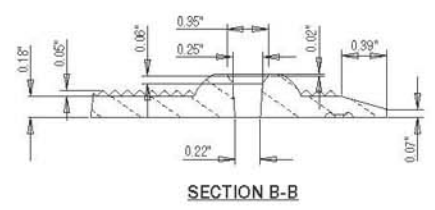
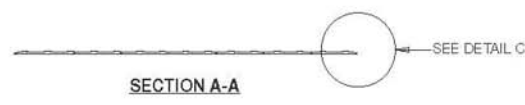
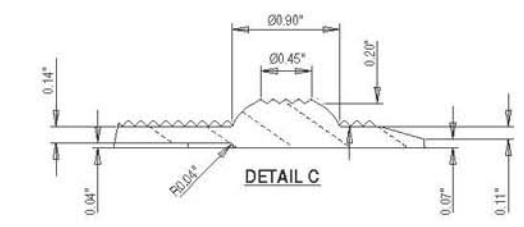
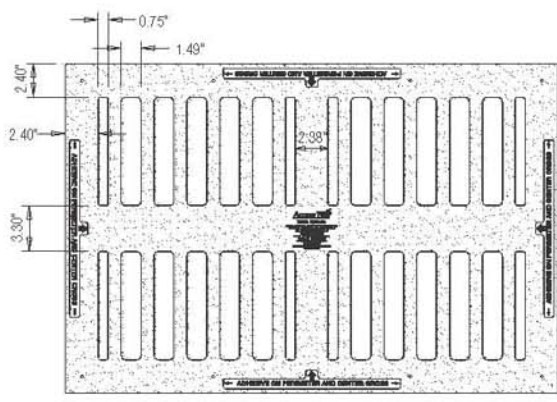
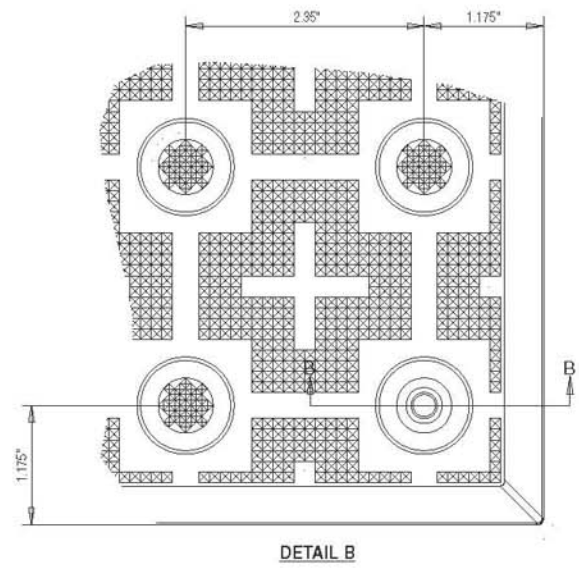
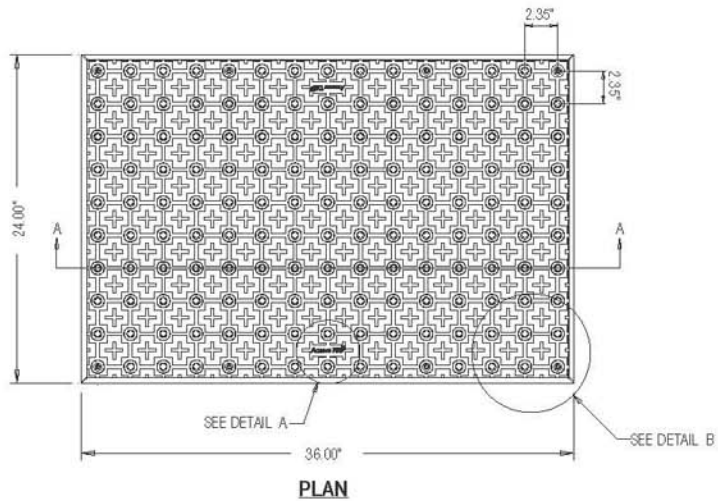
PROJECT **ACCESS TILE**®
TRUNCATED DOME, DETECTABLE WARNING TACTILE SURFACE
2X2 SURFACE APPLIED
INLINE DOME TILE DRAWING.

DRAWING NO.	ACC-S-2X2	REV. NO.	0
-------------	-----------	----------	---

2' x 3'

SURFACE APPLIED | Upgrade existing concrete to comply with ADAAG detectable warning.

2.35" DOME SPACING



www.AccessTile.com

Access Products Inc

© Access Products Inc.
ACCESS, ACCESS TILE, ACCESS AND THE THREE AND TWO DIMENSIONAL DESIGNS ON THE TILE BETWEEN DOMES AND/OR DOMES ARE TRADEMARKS OF ENGINEERED SYSTEMS INC. PATENTS PENDING IN THE UNITED STATES, CANADA AND INTERNATIONALLY. MANUFACTURED AND DISTRIBUTED UNDER LICENSE BY ACCESS WORLD PRODUCTS INCORPORATED www.accesstile.com
© KENNETH E. SZEKELY

MATERIAL LIST

ITEM	DESCRIPTION	PART NO.	QTY
1	ACCESS TILE	ACC-R-24X36-XX	1
2	TEK ANCHOR	ACC-FRST-XX	8

REFERENCE DRAWINGS

DWG. NO.	DESCRIPTION

No.	DATE	REVISION	APP.

SCALE 1"=12" N.O. FULL SIZE ONLY

DESIGNED	HES	DATE	10/09/2008
DRAWN	RWD		10/15/2008
CHECKED	HES		

NOTE: STANDARD TOLERANCE = 0.05"

TITLE	DETECTABLE WARNING SURFACE	PART NO.	ACC-S-24X36
MATERIAL	POLYMER COMPOSITE		

SUBJECT
ACCESS TILE
TRUNCATED DOME, DETECTABLE WARNING TACTILE SURFACE

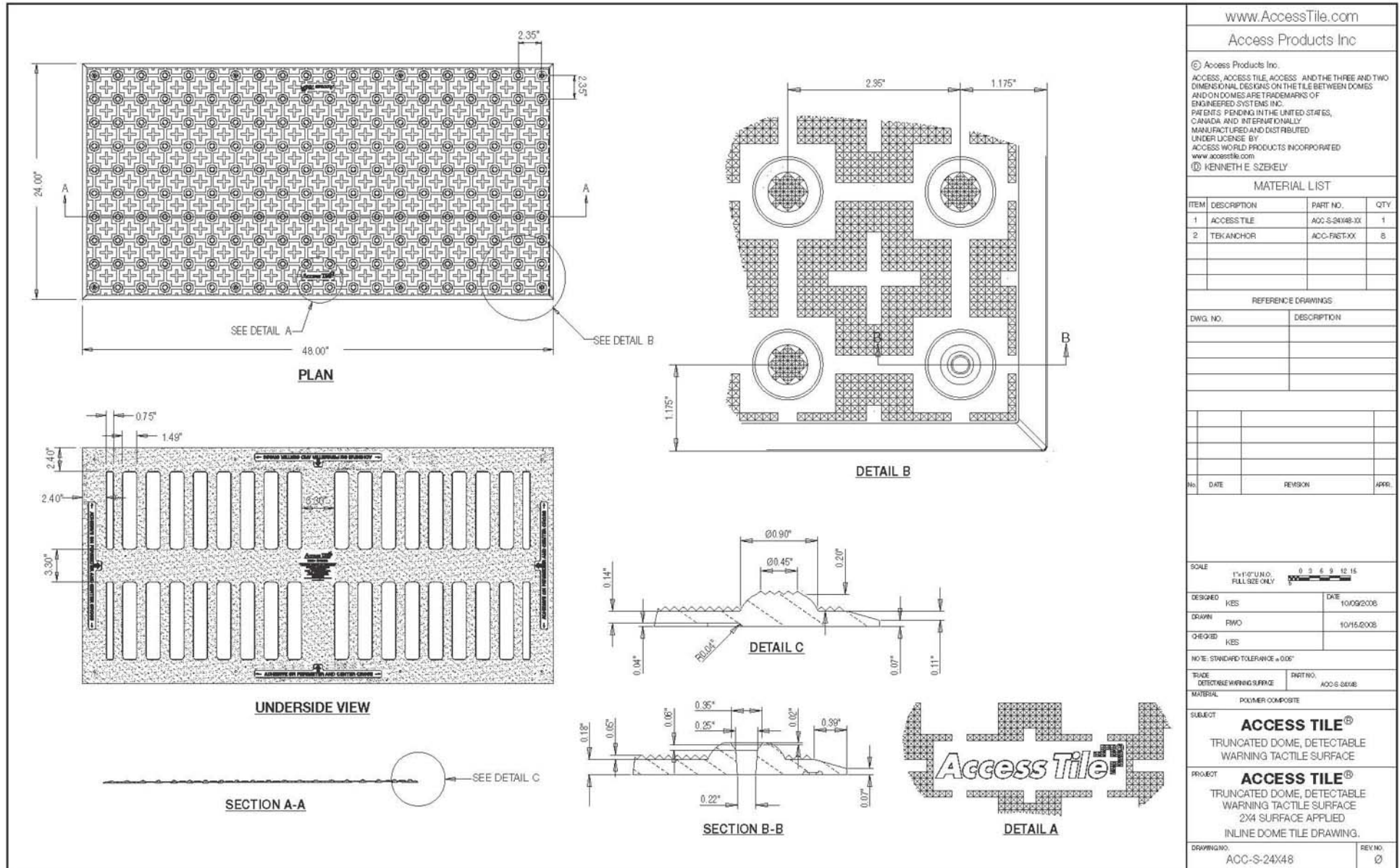
PROJECT
ACCESS TILE
TRUNCATED DOME, DETECTABLE WARNING TACTILE SURFACE 2'X3' SURFACE APPLIED IN-LINE DOME TILE DRAWING.

DRAWING NO.	ACC-S-24X36	REV. NO.	0
-------------	-------------	----------	---

2' x 4'

SURFACE APPLIED | Upgrade existing concrete to comply with ADAAG detectable warning.

2.35" DOME SPACING



www.AccessTile.com
Access Products Inc

© Access Products Inc.
ACCESS, ACCESS TILE, ACCESS AND THE THREE AND TWO DIMENSIONAL DESIGNS ON THE TILE BETWEEN DOMES AND OHN DOMES ARE TRADEMARKS OF ENGINEERED SYSTEMS INC. PATENTS PENDING IN THE UNITED STATES, CANADA AND INTERNATIONALLY. MANUFACTURED AND DISTRIBUTED UNDER LICENSE BY ACCESS WORLD PRODUCTS INCORPORATED www.accesstile.com
KENNETH E. SZKELY

MATERIAL LIST

ITEM	DESCRIPTION	PART NO.	QTY
1	ACCESS TILE	ACC-S-24X4-3X	1
2	TEK ANCHOR	ACC-FRST00X	8

REFERENCE DRAWINGS

DWG. NO.	DESCRIPTION

No.	DATE	REVISION	APP.

SCALE 1"=18" UNLESS OTHERWISE NOTED
FULL SIZE ONLY

DESIGNED	KES	DATE	10/09/2008
DRAWN	FWO	DATE	10/15/2008
CHECKED	KES		

NOTE: STANDARD TOLERANCE ± 0.005"

TITLE	DETECTABLE WARNING SURFACE	PART NO.	ACC-S-24X4
-------	----------------------------	----------	------------

MATERIAL POLYMER COMPOSITE
SUBJECT **ACCESS TILE**
TRUNCATED DOME, DETECTABLE WARNING TACTILE SURFACE

PROJECT **ACCESS TILE**
TRUNCATED DOME, DETECTABLE WARNING TACTILE SURFACE
2'x4' SURFACE APPLIED
INLINE DOME TILE DRAWING.

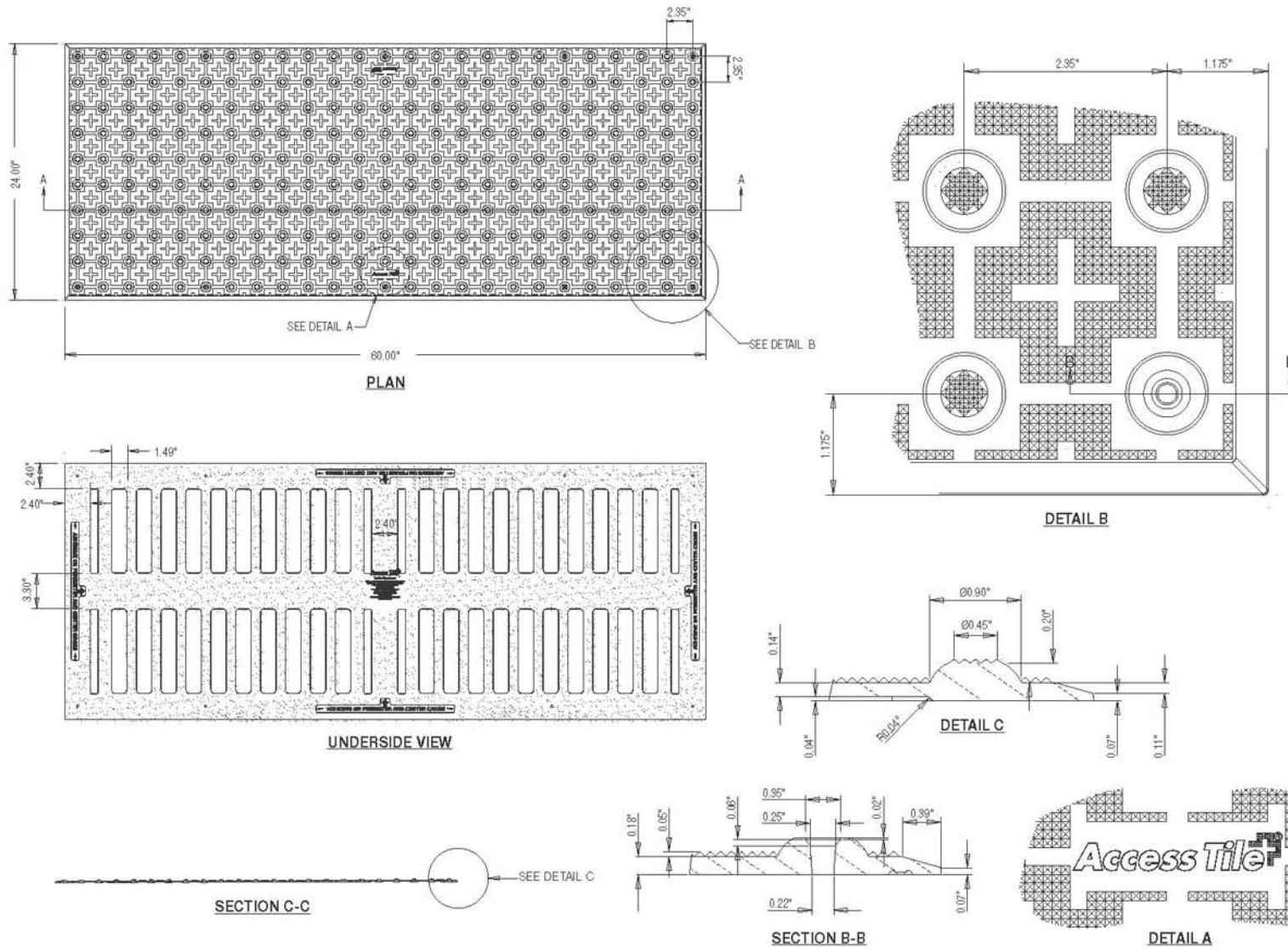
DRAWING NO.	ACC-S-24X48	REV NO.	0
-------------	-------------	---------	---

2' × 5'

SURFACE APPLIED | Upgrade existing concrete to comply with ADAAG detectable warning.
2.35" DOME SPACING

Access Tile

www.accesstile.com 888-679-4022



www.AccessTile.com

Access Products Inc

© Access Products Inc.
 ACCESS, ACCESS TILE, ACCESS AND THE THREE AND TWO DIMENSIONAL DESIGNS ON THE TILE BETWEEN DOMES AND ON DOMES ARE TRADEMARKS OF ENGINEERED SYSTEMS INC. PATENTS PENDING IN THE UNITED STATES, CANADA AND INTERNATIONALLY. MANUFACTURED AND DISTRIBUTED UNDER LICENSE BY ACCESS WORLD PRODUCTS INCORPORATED www.accesstile.com
 (D) KENNETH E. SZELYI

MATERIAL LIST

ITEM	DESCRIPTION	PART NO.	QTY
1	ACCESS TILE	ACC-S-24X60-XX	1
2	TEK ANCHOR	ACC-FAST-XX	10

REFERENCE DRAWINGS

DWG. NO.	DESCRIPTION

NO.	DATE	REVISION	APP.

SCALE: 1"=1'-0" U.S. FULL SIZE ONLY

DESIGNED: KES DATE: 10/09/2008

DRAWN: RWO DATE: 10/15/2008

CHECKED: KES

NOTE: STANDARD TOLERANCE = 0.005"

TRACE: DETECTABLE WARNING SURFACE PART NO.: ACC-S-24X60

MATERIAL: POLYMER COMPOSITE

SUBJECT: **ACCESS TILE**[®]

TRUNCATED DOME, DETECTABLE WARNING TACTILE SURFACE

PROJECT: **ACCESS TILE**[®]

TRUNCATED DOME, DETECTABLE WARNING TACTILE SURFACE

2X5 SURFACE APPLIED

INLINE DOME TILE DRAWING.

DRAWING NO.: ACC-S-24X60

REV. NO.: 0

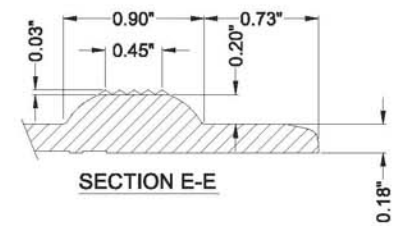
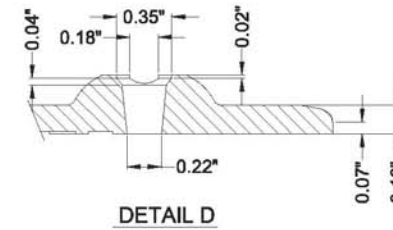
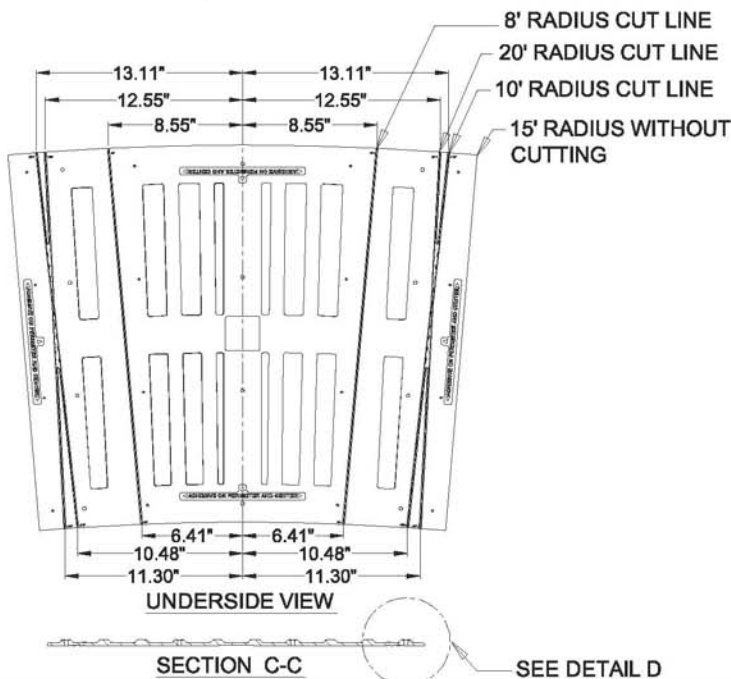
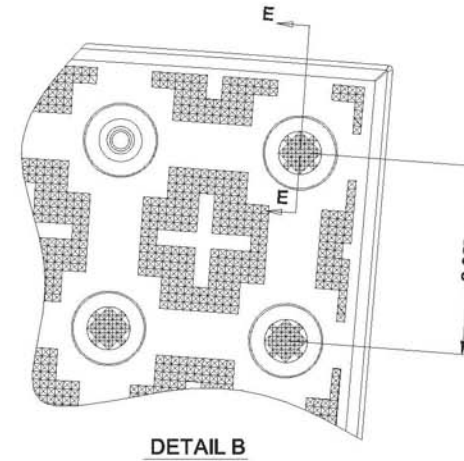
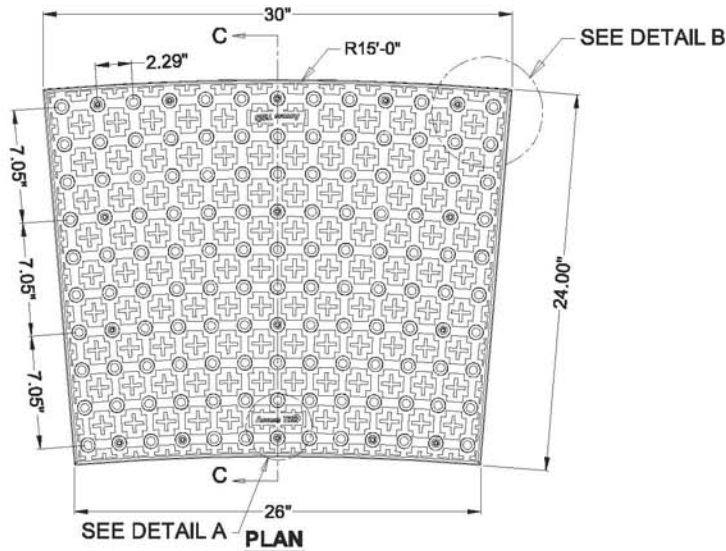
3' x 4'

SURFACE APPLIED | Upgrade existing concrete to comply with ADAAG detectable warning.

2.35" DOME SPACING



www.accesstile.com 888-679-4022



AccessTile.com

Access Products Inc.

ACCESS, ACCESS TILE, ACCESS AND THE THREE AND TWO DIMENSIONAL DESIGNS ON THE TILE BETWEEN DOMES AND ON DOMES ARE TRADEMARKS OF ENGINEERED SYSTEMS INC.

PATENTS PENDING IN THE UNITED STATES, CANADA AND INTERNATIONALLY.

MANUFACTURED AND DISTRIBUTED UNDER LICENSE BY ACCESS WORLD PRODUCTS INCORPORATED.

MATERIAL LIST

ITEM	DESCRIPTION	PART NO.	QTY
1	ACCESS TILE	ACC-S-3024CRV	1
2	Tek™ ANCHOR	ACC-S-ANCH	16
3	TACTILE BOND AND SEAL	TBS-010	1 ea

NOTE: FASTENERS AND 1 TUBE OF TACTILE BOND AND SEAL ARE INCLUDED WITH TILE

REFERENCE DRAWINGS

DWG. NO.	DESCRIPTION

DATE	REVISION	APPR.

SCALE 1"=1'-0" U.N.I.T. FULL SIZE ONLY

DESIGNED	DATE
KES	12/20/2013

DRAWN	DATE
VS	06/26/2014

CHECKED DD

PROJECT MANAGER

TRADE	PART NO.
DETECTABLE WARNING SURFACE	ACC-S-3024CRV

MATERIAL POLYMER COMPOSITE

SUBJECT

ACCESS TILE®
TRUNCATED DOME, DETECTABLE WARNING TACTILE SURFACE

PROJECT **ACCESS TILE®**
TRUNCATED DOME, DETECTABLE WARNING TACTILE SURFACE
30"x24" CURVED SURFACE APPLIED INLINE DOME TILE DRAWING.

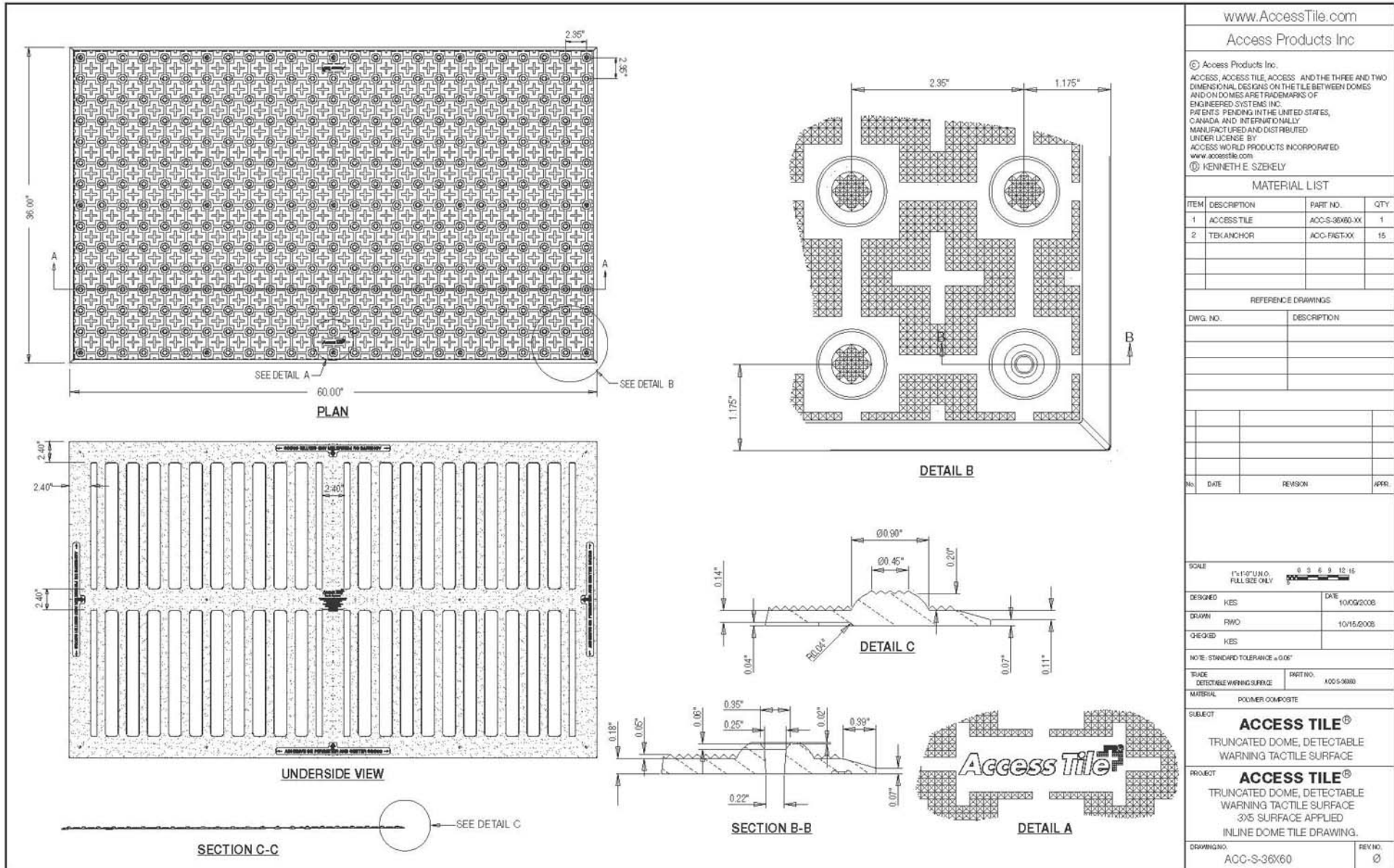
DRAWING NO.	REV. NO.
ACC-S-3024CRV	0

3' x 5'

SURFACE APPLIED | Upgrade existing concrete to comply with ADAAG detectable warning. 2.35" DOME SPACING



www.accesstile.com 888-679-4022



www.AccessTile.com

Access Products Inc

© Access Products Inc.
ACCESS, ACCESS TILE, ACCESS AND THE THREE AND TWO DIMENSIONAL LOGOS ON THE TILE BETWEEN DOMES AND ON DOMES ARE TRADEMARKS OF ENGINEERED SYSTEMS INC. PATENTS PENDING IN THE UNITED STATES, CANADA AND INTERNATIONALLY. MANUFACTURED AND DISTRIBUTED UNDER LICENSE BY ACCESS WORLD PRODUCTS INCORPORATED www.accessworld.com
© KENNETH E. SZERELY

MATERIAL LIST

ITEM	DESCRIPTION	PART NO.	QTY.
1	ACCESS TILE	ACC-S-36X60-XX	1
2	TEK ANCHOR	ACC-FAST-XX	15

REFERENCE DRAWINGS

DWG. NO.	DESCRIPTION

No.	DATE	REVISION	APP.

SCALE: 1"=1'-0" U.S. FULL SIZE ONLY

DESIGNED	DATE
KES	10/09/2008
DRAWN	DATE
RWO	10/15/2008
CHECKED	DATE
KES	

NOTE: STANDARD TOLERANCE = 0.005"

TRADE: DETECTABLE WARNING SURFACE

MATERIAL: POLYMER COMPOSITE

SUBJECT: **ACCESS TILE®**

TRUNCATED DOME, DETECTABLE WARNING TACTILE SURFACE

PROJECT: **ACCESS TILE®**

TRUNCATED DOME, DETECTABLE WARNING TACTILE SURFACE 3X5 SURFACE APPLIED IN-LINE DOME TILE DRAWING.

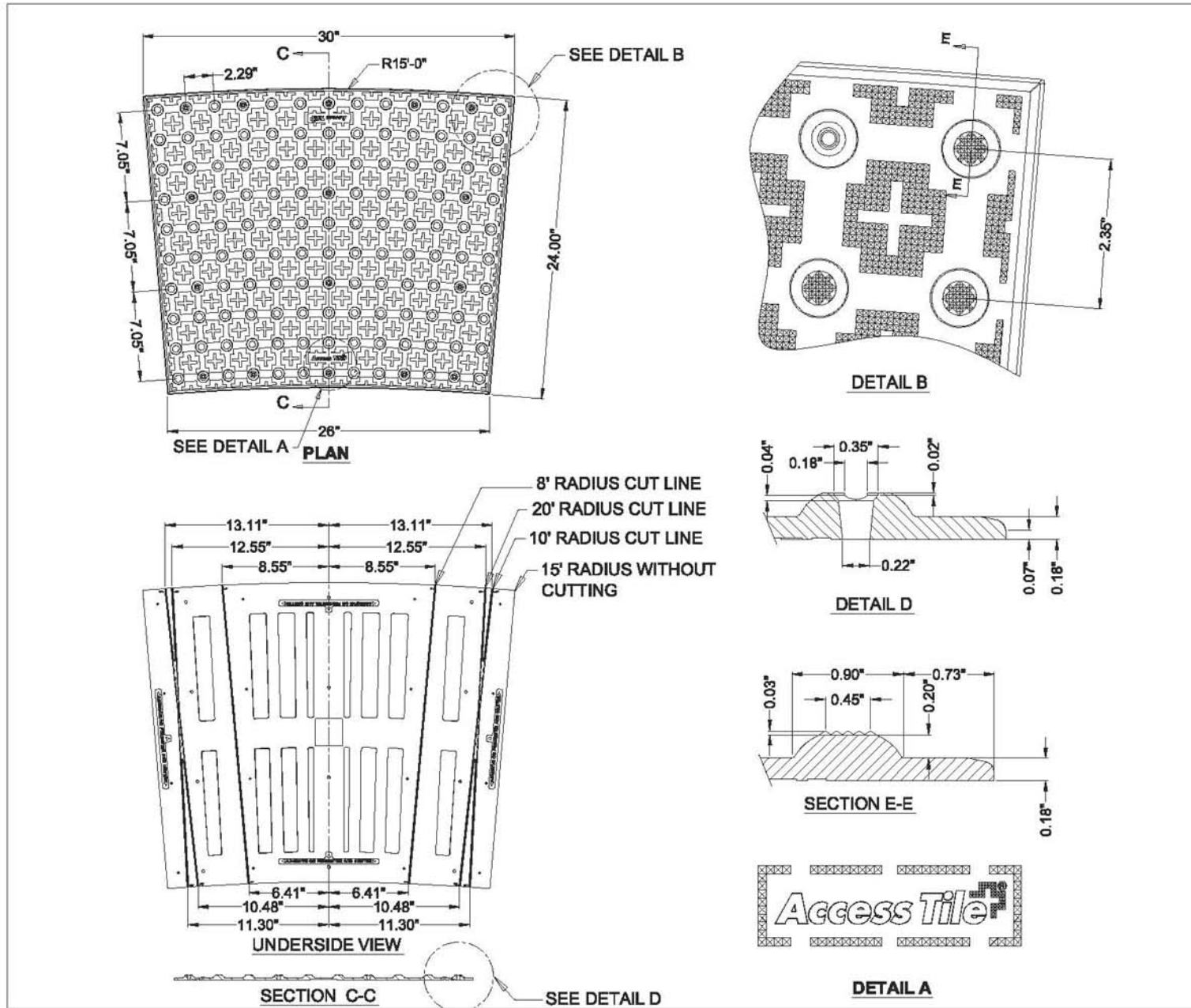
DRAWING NO.: ACC-S-36X60 REV NO.: 0

RADIUS

SURFACE APPLIED | Upgrade existing concrete to comply with ADAAG detectable warning.
2.35" DOME SPACING



www.accesstile.com 888-679-4022



AccessTile.com

Access Products Inc.

ACCESS, ACCESS TILE, ACCESS AND THE THREE AND TWO DIMENSIONAL DESIGNS ON THE TILE BETWEEN DOMES AND ON DOMES ARE TRADEMARKS OF ENGINEERED SYSTEMS INC.

PATENTS PENDING IN THE UNITED STATES, CANADA AND INTERNATIONALLY.

MANUFACTURED AND DISTRIBUTED UNDER LICENSE BY ACCESS WORLD PRODUCTS INCORPORATED.

MATERIAL LIST

ITEM	DESCRIPTION	PART NO.	QTY.
1	ACCESS TILE	ACC-S-3024CRV	1
2	Tek [®] ANCHOR	ACC-S-ANCH	16
3	TACTILE BOND AND SEAL	TBS-D10	1 ea

NOTE: FASTENERS AND 1 TUBE OF TACTILE BOND AND SEAL ARE INCLUDED WITH TILE.

REFERENCE DRAWINGS

DWG. NO.	DESCRIPTION

No.	DATE	REVISION	APPR.

SCALE: 1"=1'-0" U.S. & I.D. FULL SIZE ONLY

DESIGNED: KES DATE: 12/20/2013
 DRAWN: VS DATE: 08/28/2014
 CHECKED: DD
 PROJECT MANAGER: PART NO.: ACC-S-3024CRV
 TRADE: DETECTABLE WARNING SURFACE
 MATERIAL: POLYMER COMPOSITE
 SUBJECT: **ACCESS TILE[®]**
 TRUNCATED DOME, DETECTABLE WARNING TACTILE SURFACE
 PROJECT: **ACCESS TILE[®]**
 TRUNCATED DOME, DETECTABLE WARNING TACTILE SURFACE
 30"x24" CURVED SURFACE APPLIED INLINE DOME TILE DRAWING.
 DRAWING NO.: ACC-S-3024CRV REV. NO.: 0

DISTRIBUTION & CUSTOMER SUPPORT

The most extensive sales and distribution network in the industry.

Our distributor network provides stocking point of sale locations nationally. With immediate service and access to personal sales attention with local representatives, your experience with Access Tile will be superior in every aspect.

For a full listing of our distribution locations, please visit our website www.accesstile.com or contact a representative by telephone, **888-679-4022**



Access Tile is designed, tested,
and manufactured in the **U.S.A.**



ACCESS, ACCESS TILE, ACCESS+ AND THE THREE AND TWO DIMENSIONAL DESIGNS ON THE TILE BETWEEN DOMES AND ON DOMES ARE TRADEMARKS OF ENGINEERED SYSTEMS INC. PAT. PENDING IN THE UNITED STATES. MANUFACTURED AND DISTRIBUTED UNDER LICENSE BY ACCESS WORLD PRODUCTS INCORPORATED

DETAIL E

CAST IN PLACE REPLACEABLE

SPECIFICATIONS

Part No.	Standard Sizes	Weight	Box Quantity	Anchors Included
ACC-R-1212-XX	1' x 1'	5 lbs. (2 kg)	10	4
ACC-R-2424-XX	2' x 2'	9 lbs. (4 kg)	10	9
ACC-R-2436-XX	2' x 3'	12 lbs. (5 kg)	10	12
ACC-R-2448-XX	2' x 4'	13lbs. (7 kg)	10	13
ACC-R-2460-XX	2' x 5'	18 lbs. (9 kg)	10	18
ACC-R-3648-XX	3' x 4'	24 lbs. (11kg)	10	18
ACC-R-3660-XX	3' x 5'	31lbs. (14 kg)	10	24
ACC-R-3024CRV	30" x 24" 15' Radius	10 lbs. (4 kg)	10	9
ACC-R-ANCH	Anchor Assembly		50	
BIT-T27	T-27 Tamper Proof Torx® Bit		5	

STANDARD COLORS

 Federal Yellow (YW) FED 3353B / RAL 100Y	 Colonial Red / Brown (COL) FED 30109 / RAL 8012	 Light Gray (LG) FED 26780
 Ochre Yellow (OCR) FED 23394	 Ocean Blue (BL) FED 15187 / RAL 2436	 Dark Gray (DG) FED 36118 / FED 36091 / RAL 2486
 Brick Red (RD) FED 23144 / RAL 3016	 Pearl White (WH) FED 37875	 Onyx Black (BK) FED 17038 / RAL 9005

PHYSICAL CHARACTERISTICS

ASTM Reference	Test Description	Test Results
ASTM D 695	Compressive Strength	26,900
ASTM D 790	Flexural Strength	31,300
ASTM D 570	Water Absorption	0.05%
ASTM C 1028	Slip Resistance	1.18 Dry / 0.88 wet
ASTM E 84	Flame Spread Index	≤25
ASTM B 117	Salt Spray	No Change (300 hours)
ASTM 1308	Chemical Stain	No Effect
ASTM C 501	Abrasion Resistance	lw >500
ASTM G 155	Accelerated Weathering	Delta E <5 (2,000 hours)
ASTM D 638	Tensile Strength	12,800 psi
AASHTO-H20	Load Bearing at 10,410 lbs.	No Cracking, Delamination or Deformation
ASTM C 1026	Freeze/Thaw/Heat	No Chipping, Cracking or Peeling
ASTM D 1037	Accelerated Aging (Freeze/Thaw)	No Change in Color, Gloss or Delamination
ASTM D 696-03	Linear Thermal Expansion	9.45 x 10 ⁻⁷ per ° Fahrenheit
RCRA-C	Non-Hazardous Classification	Non-Hazardous

Products listed in this catalog represent typical average values determined in accordance with accepted test methods. The data is subject to normal manufacturing and testing variations, and subject to change without notice. Specifications, see www.accessstile.com

SURFACE APPLIED

SPECIFICATIONS

Part No.	Standard Sizes	Weight	Box Quantity	Anchors Included
ACC-S-1212-XX	1' x 1'	2 lbs. (1 kg)	16	4
ACC-S-2424-XX	2' x 2'	8 lbs. (4kg)	16	12
ACC-S-2436-XX	2' x 3'	10 lbs. (5 kg)	16	8
ACC-S-2448-XX	2' x 4'	13 lbs. (6 kg)	16	8
ACC-S-2460-XX	2' x 5'	16 lbs. (7 kg)	16	10
ACC-S-3648-XX	3' x 4'	20 lbs. (9 kg)	16	12
ACC-S-3660-XX	3' x 5'	27 lbs. (12 kg)	16	15
ACC-S-3024CRV	30" x 24" 15' Radius	8 lbs. (4 kg)	16	8
ACC-S-ANCH-XX	Tek™ Anchor		50	
TBS-010	Tactile Bond & Seal		12	

STANDARD COLORS

	Federal Yellow (YW) FED 3353B / RAL 1003		Colonial Red / Brown (COL) FED 20109 / RAL 8012		Light Gray (LG) FED 26280
	Ochre Yellow (OCR) FED 23594		Ocean Blue (BL) FED 15187 / RAL 2486		Dark Gray (DG) FED 35118 / FED 36081 RAL 2486
	Brick Red (RD) FED 22144 / RAL 3016		Pearl White (WH) FED 33875		Onyx Black (BK) FED 17018 / RAL 9005

PHYSICAL CHARACTERISTICS

ASTM Reference	Test Description	Test Results
ASTM D 695	Compressive Strength	26,900
ASTM D 790	Flexural Strength	31,300
ASTM D 570	Water Absorption	0.05%
ASTM C 1028	Slip Resistance	1.18 Dry / 0.88 wet
ASTM E 84	Flame Spread Index	≤25
ASTM B 117	Salt Spray	No Change (300 hours)
ASTM 1308	Chemical Stain	No Effect
ASTM C 501	Abrasion Resistance	Iw >500
ASTM G 155	Accelerated Weathering	Delta E <5 (2,000 hours)
ASTM D 638	Tensile Strength	12,800 psi
AASHTO-H20	Load Bearing at 10,410 lbs.	No Cracking, Delamination or Deformation
ASTM C 1026	Freeze/Thaw/Heat	No Chipping, Cracking or Peeling
ASTM D 1037	Accelerated Aging (Freeze/Thaw)	No Change in Color, Gloss or Delamination
ASTM D 696-03	Linear Thermal Expansion	9.45 x 10 ⁻⁷ per ° Fahrenheit
ASTM C 1583	Tile Bond Strength	Passed
RCRA-C	Non-Hazardous Classification	Non-Hazardous

Products listed in this catalog represent typical average values determined in accordance with accepted test methods. The data is subject to normal manufacturing and testing variations, and subject to change without notice. Specifications, see www.accessible.com

ACCESS, ACCESS TILE, ACCESS+ AND THE THREE AND TWO DIMENSIONAL DESIGNS ON THE TILE BETWEEN DOMES AND ON DOMES ARE TRADEMARKS OF ENGINEERED SYSTEMS INC. PAT. PENDING IN THE UNITED STATES. MANUFACTURED AND DISTRIBUTED UNDER LICENSE BY ACCESS WORLD PRODUCTS INCORPORATED

SALES TEAM

educated experienced exceptional



John Heffner works closely with all of his distributors and contractors who value his extensive product knowledge and industry experience. Those who work with John know that he is a dedicated professional who is passionate about his work and always lends personal care to everything he is involved with. John leads our exceptional sales team and is most proud of their track record for proven customer satisfaction.

johnh@accessproducts.com
Ph: 888-679-4022 ext. 150
Cell: 916-919-0568
Fax: 916-361-6546

HEAD OFFICE SALES SUPPORT



The Access Products Inc. sales support group is an exceptional team that is always available to assist customers, distributors and contractors. Any inquiry from product knowledge and understanding our detectable warning tile systems to placing and tracking orders will be addressed professionally and promptly by our highly experienced sales support team.

Access Products Inc.
241 Main Street, Suite 100
Buffalo, NY 14203
Ph: 888-679-4022
Fax: 877-679-4022

General Inquiries: info@accessproducts.com
Tech Support: tech@accessproducts.com
Sales: sales@accessproducts.com

FOR TECHNICAL ASSISTANCE OR ORDER INQUIRIES PLEASE CONTACT YOUR LOCAL TERRITORY MANAGER

Pacific North

Idaho, Oregon, Washington, Montana, Wyoming, Alaska

Ph: 425-766-6234

Pacific Central

Northern California, Hawaii, Northern Nevada

Ph: 916-844-4132

Pacific South

Southern California, Southern Nevada, Arizona

Ph: 562-842-9934

Mid West

Iowa, Kansas, Illinois, Minnesota, North Dakota, South Dakota, Nebraska, Wisconsin, Missouri, Colorado, Utah

Ph: 630-689-7574

Gulf Region

Texas, Oklahoma, Arkansas, Louisiana, Mississippi, New Mexico

Ph: 817-205-6319

Great Lakes Region

Michigan, Kentucky, Indiana, Ohio, Tennessee

Ph: 347-278-7729

North Atlantic

New York, New Jersey, Pennsylvania

Ph: 908-255-2708

North Atlantic

Connecticut, Massachusetts, Maine, New Hampshire, Rhode Island, Vermont

Ph: 203-901-0585

Mid Atlantic

Delaware, Maryland, Virginia, West Virginia, Eastern Tennessee (Knoxville/Chattanooga), North Carolina, South Carolina, Georgia, Washington DC

Ph: 919-622-4615

South Atlantic

Alabama, Florida

Ph: 407-803-2966

To find your local distributor go on line www.accessstile.com/distribution, or call 888-679-4022 / fax 877-679-4022.

One of our factory trained representatives will ensure you an accurate timely reply to any question you may have regarding the use or purchase of our products.

Access Tile®

Tactile Systems

the power of intelligent design and precision engineering™

Access Products Inc.
241 Main Street, Suite 100
Buffalo, NY 14203
Ph: 888-679-4022
Fax: 877-679-4022

General Inquiries: info@accessproducts.com
Tech Support: tech@accessproducts.com
Sales: sales@accessproducts.com

OTHER INNOVATIONS FROM ACCESS PRODUCTS


VISIBLY BETTER

Photoluminescent Emergency Lighting,
Signs & Stair Nosing Products
www.us.ecoglo.com




Articulating Sidewalk Joint System

www.us.tripstop.net