

American Formliners

Pattern Catalog

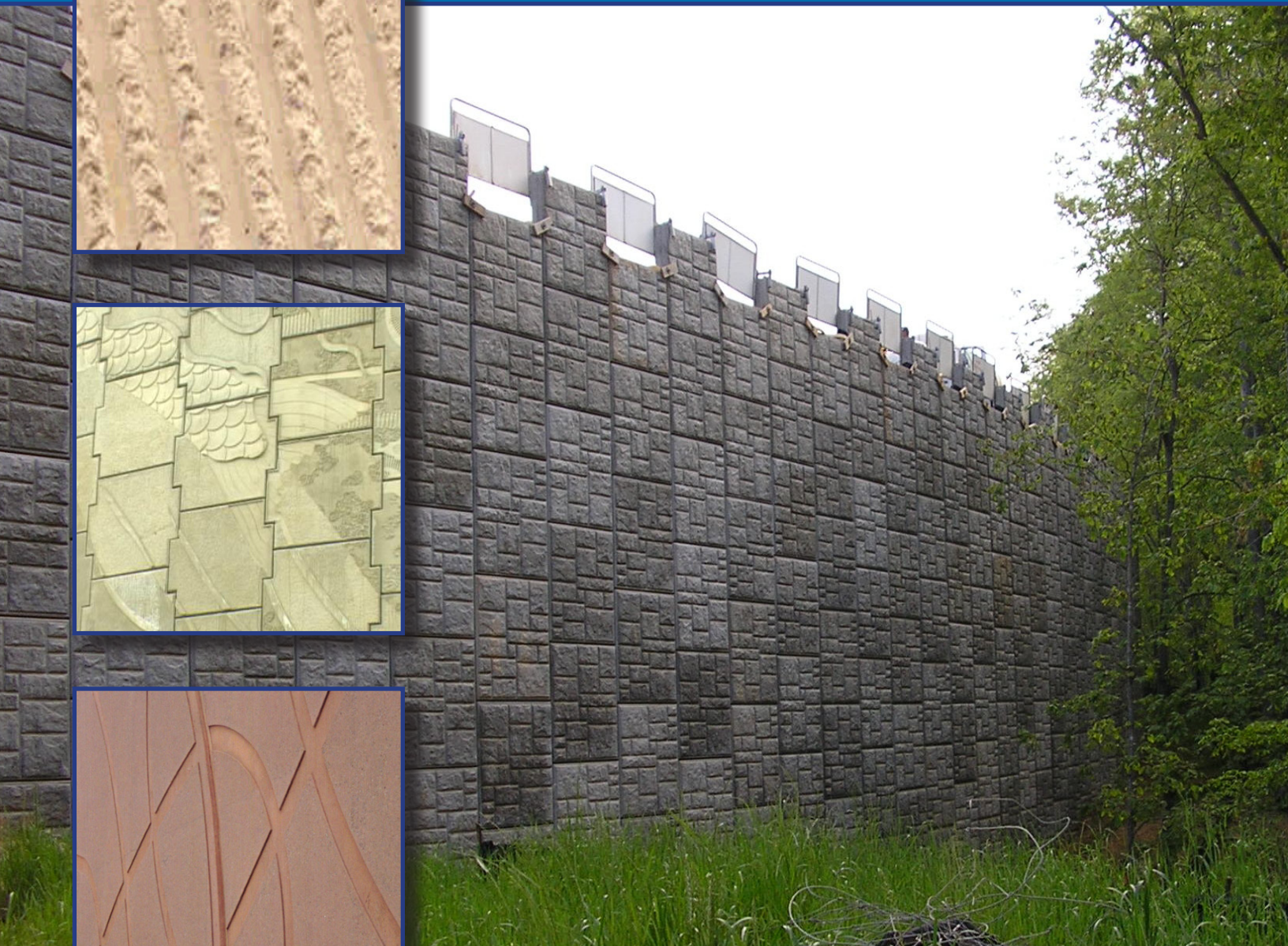
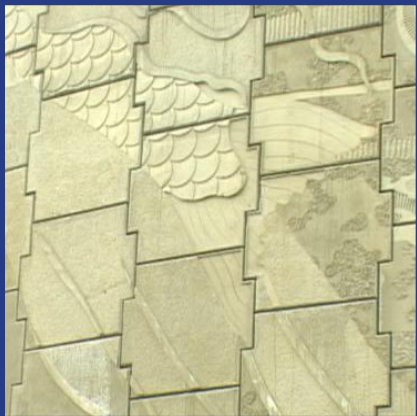


Table of Contents

More Patterns... More Possibilities!	1
Application	2
Pattern Index	3
Trapezoid Patterns	4
Stone Patterns	11
Wood Patterns	18
Fractured Patterns	21
Masonry Patterns	25
Other Patterns	30
Technical Data	31
Warranty	32

More Patterns... More Possibilities!

American Formliners can make a lasting impression in concrete at an affordable price. And American Formliners has the project experience, pattern recommendations and material options to make sure every cast-in-place, tilt-up or precast application is successful.

American Formliners has the patterns, including brick, rope, fractured fin, wood grain and most DOT textures, that will complement almost any concrete structure. These patterns are being specified by architectural/ engineering firms and state Departments of Transportation, and installed by concrete contractors throughout North America every day.

American Formliners provides several advantages:

- State-of-the-art manufacturing by an industry-trusted name
- Single-use, multi-use and extended-use material options
- Hard-to-find pattern lengths for greater forming versatility
- End-to-end and side-to-side matching for seamless appearance
- Cost-effective material pricing with nationwide availability
- Custom design capability for unique forming applications

Application Summary

Design

- **Texture** – Surface details and finishes are permanently molded into the formliner material during production resulting in a consistent concrete appearance.
- **Depth** – Geometric and high-relief textures can be reproduced using HIPS, ABS, PE or PPE materials. Undercut textures can be reproduced using the flexible PE or PPE material.
- **Specification** – Formliners are typically identified by pattern number and description, except for custom designs having drawings and supporting documentation.

Budget

- **Project Budget** – The project schedule and forming cycle time typically dictates the material and budget requirements.
- **Labor Budget** – Reusable formliners, properly coordinated with concrete forming operations, can significantly improve site productivity, minimizing associated forming costs

Reusability – Single-use HIPS plastic, medium-use ABS plastic, and extended-use PE and PPE elastomeric materials are available for your specific concrete forming application.

Rate-of-Pour – Formliners are typically designed to withstand concrete placement of five feet per hour, but there are other materials/methods available if an application exceeds this limit.

Attachment

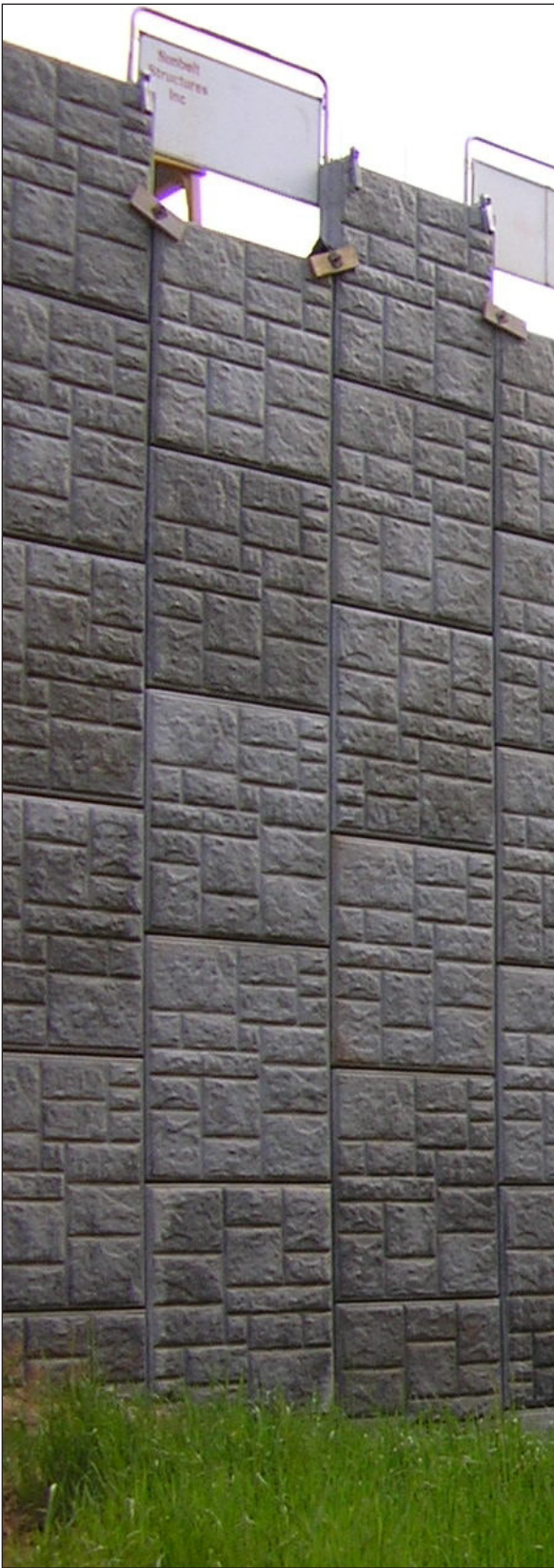
Formliners are used in cast-in-place, precast or tilt-up. All mounting surfaces should be clean and dry. ABS and HIPS materials can be installed using screws or staples. PE and PPE materials are typically plywood-mounted with adhesive and subsequently bolted to formwork. Adhesive tapes, foam tapes and silicone caulks are used at joints and seams to minimize grout leakage.

Alignment

The formwork must be properly aligned and in common planes. A “stack up” of tolerances can result in a noticeable “step” in the finished concrete surface, especially with “shallow” formliner patterns. Reveals or rustications are recommended at joints to simplify forming, accentuate the texture and reduce grout leakage.

Form Release

Formliners should be sprayed with a premium form release before each use and within the same day concrete is placed. Form release should be applied with a low-flow, wide-angle, flat-spray nozzle and wipe with a cloth to insure an evenly-coated formliner surface. Formliners should always be covered when not in use.



Trapezoid Patterns

1100 – 1-1/2" Deep, 6" OC	4
1101 – 1-1/2" Deep, 4" OC	4
1102 – 1-1/2" Deep, 2" OC	4
1104 – 3/4" Deep, 2" OC	4
1105 – 1/2" Deep, 1-1/2" OC	5
1106 – 3/4" Deep, 1-1/2" OC	5
1107 – 1-1/2" Deep, 3" OC	5
1108 – 3/4" Deep, 4" OC	5
1109 – 1/2" Deep, 6" OC	6
1110 – 3/4" Deep, 4" OC	6
1111 – 1-1/2" Deep, 6" OC	6
1112 – 3/4" Deep, 6" OC	6
1113 – 1/2" Deep, 2-13/16" OC	7
1114 – 7/8" Deep, 1-1/2" OC	7
1116 – ADOT Random Rib, 1-1/2" Deep	7
1117 – 1-1/2" Deep, 6" OC	7
1121 – 1/2" Deep, 6" OC	8
1122 – Random Striations	8
1127 – 1" Deep, 4" OC	8
1138 – 3/4" Deep, 1-1/4" OC	8
1153 – 1/4" Deep Tri-Level	9
1156 – 3/4" Deep Rib	9
1180 – 3/4" Deep, 6" OC	9
1181 – Saw Tooth, 1" Deep Rib, 1-1/2" OC	9
1195 – 3/4" Deep, 6" OC	10
1196 – 1" Deep, 2-1/8" OC	10

Stone Patterns

1200 – Light / Medium Sandblast	11
1201 – Heavy Sandblast	11
1202 – 1-1/4" Random Ashlar Stone	11
1203 – 1-1/2" Random Ashlar Stone	11
1204 – Dry Stack	12
1205 – 3/4" Aggregate	12
1206 – 3/4" Deep Fractured Concrete	12
1207 – 1" Quartz	12
1209 – 1-1/8" Fractured Granite	13
1210 – London Cobble Stone	13
1212 – Oregon Basalt	13
1232 – Rustic Random Ashlar	13
1239 – Random Fieldstone	14
1240 – Random River Rock, 3/4" Deep	14
1241 – Random River Rock, 1-1/2" Deep	14
1255 – Vertical Flagstone	14
1265 – Limestone	15
1266 – 2" Random Ashlar Stone	15
1273 – Runningbond Ashlar Stone	15
1280 – Random Drystack	15
1281 – Bush Hammer	16
1285 – Pea Gravel	16
1290 – Phoenix Limestone	16
1295 – Sierra Drystack	16
1296 – Long Island Ashlar	17

Wood Patterns

1300 – 1/4" Deep, 6" OC Grain	18
1301 – 1/8" Deep, 6" OC Pine Random Butt	18
1302 – 3/8" Rough Sawn Random Boards	18
1303 – 1/4" Deep Cedar Plank No Reveal	18
1304 – 1/2" Deep, 6" Smooth Shiplap	19
1305 – Barnwood	19
1306 – 3/4" Deep, 2" Cedar Grapestakes	19
1308 – 8" OC, Light Grain Random Butt Joints	19
1309 – 3-1/2" OC, Light Grain Protruding Reveal	20
1310 – 3-1/2" OC, Light Grain Random Butt Joints	20
1345 – Extra Rough Sawn Plank	20

Fractured Fin Patterns

1400 – 1/2" Rope	21
1401 – 1-3/4" Deep, 3" OC Rib	21
1403 – 1-1/2" Deep, 6" OC Rib	21
1404 – 1" Deep, 3" OC Rib	21
1405 – 3/4" Deep, 1-1/2" OC Fin	22
1406 – 1" Deep, 2-1/2" OC Rib	22
1407 – 3/8" Deep, 1-1/2" OC Rib	22
1408 – 1" Deep, 4" OC 3" Split Face Rib	22
1410 – 1" Deep, 5" OC Ripper Rebar	23
1412 – 3/4" Fin, 1-1/2" OC	23
1422 – 1-1/4" Fin, 3-3/8" OC	23
1432 – 1-1/2" Fin, 3-1/2" OC	23
1442 – 1" Fin, 2" OC	24

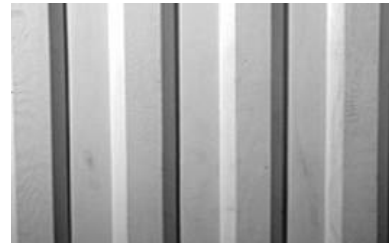
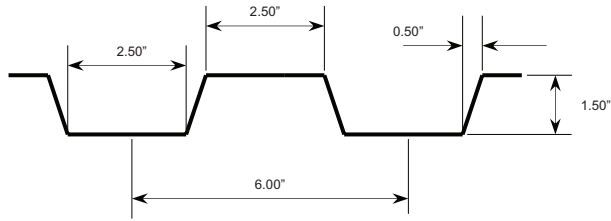
Masonry Patterns

1500 – 3/8" Deep, 8" x 16" Cinder Block	25
1501 – 2-1/4" x 7-1/2" English Brick	25
1502 – 8" x 8" Split Face Block	25
1506 – 1/2" Deep, 4" x 16" Slump Block	25
1507 – 3/4" Deep, 8" x 16" Textured Block	26
1508 – 3/4" Deep, 9" x 18" Split Face Block	26
1509 – 1/4" Deep, 2-1/2" x 8" Smooth Brick	26
1510 – 2-1/8" x 7-1/2" Wire Cut Brick	26
1516 – 3/16" Deep, 8" x 16 Split Face Block	27
1519 – 2-5/8" x 7-5/8" Smooth Block Running Bond	27
1520 – 12" x 12" Split Face Granite Block	27
1522 – 8" x 8" Smooth Face Block	27
1523 – 8" x 8" Scored Smooth Face Block	28
1526 – 3/16" Deep, 8" x 16" Split Face Block Stacked	28
1529 – 16" x 2-5/8" Split Face Block	28
1539 – 2-5/8" x 7-5/8" Sand Cast Brick	28
1549 – 2-1/2" x 7-1/2" Smooth Brick	29
1550 – Random Drystack	29
1560 – 8" x 8" Stacked Bond Block	29
1577 – Custom Split-Face Block	29

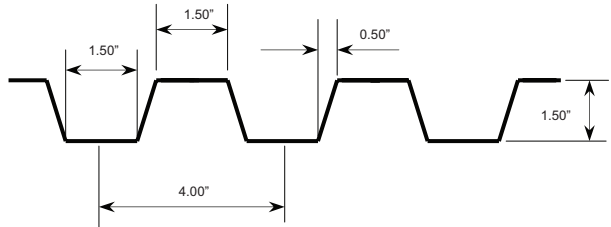
Other Patterns

1600 – 53" x 124" Smooth Face	30
1603 – 1/2" Max Depth Flagstone	30

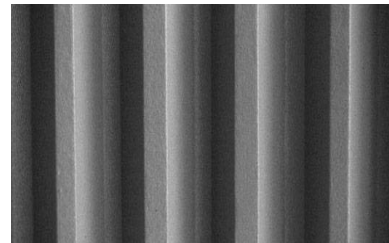
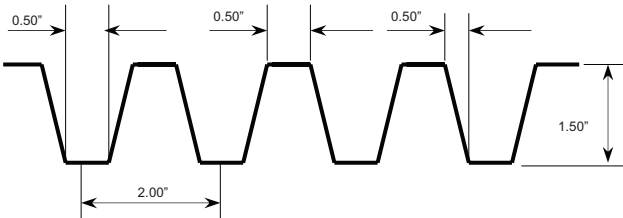
Trapezoid 1100 - 1-1/2" Deep, 6" OC



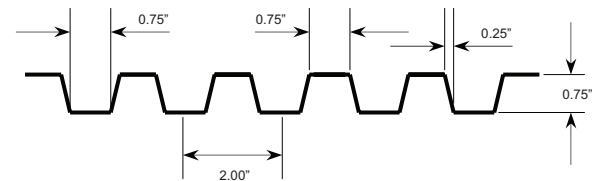
Trapezoid 1101 - 1-1/2" Deep, 4" OC



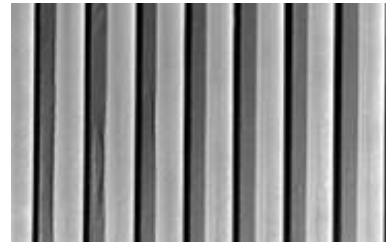
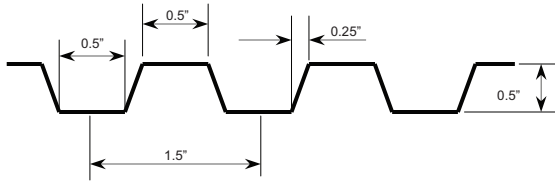
Trapezoid 1102 - 1-1/2" Deep, 2" OC



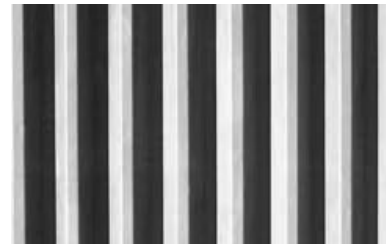
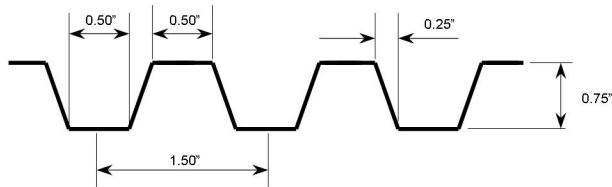
Trapezoid 1104 - 3/4" Deep, 2" OC



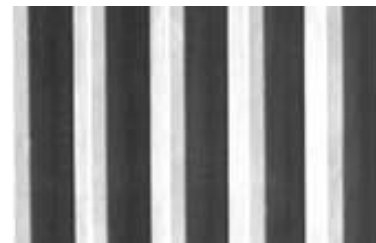
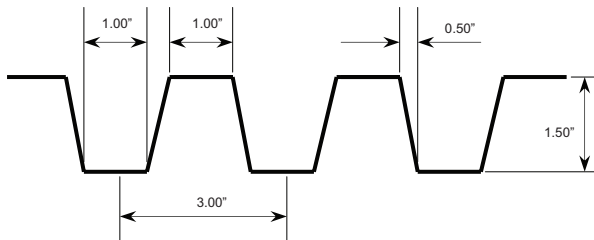
Trapezoid 1105 - 1/2" Deep, 1-1/2" OC



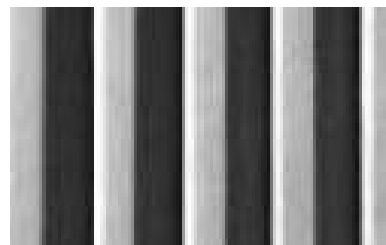
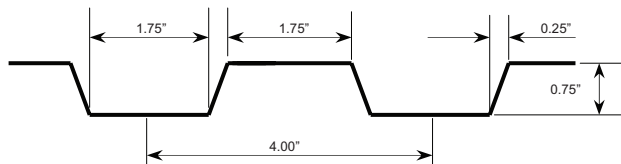
Trapezoid 1106 - 3/4" Deep, 1-1/2" OC



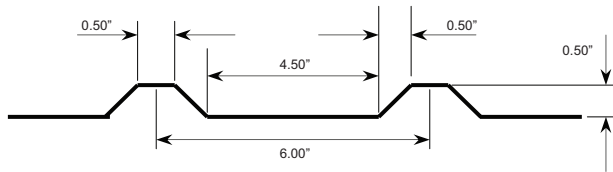
Trapezoid 1107 - 1-1/2" Deep, 3" OC



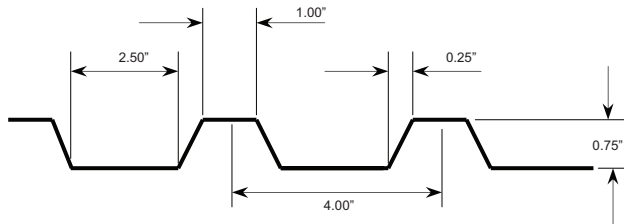
Trapezoid 1108 - 3/4" Deep, 4" OC



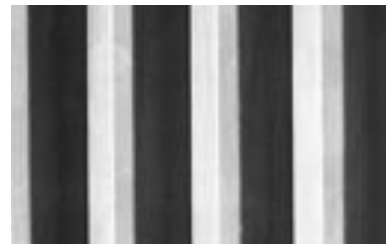
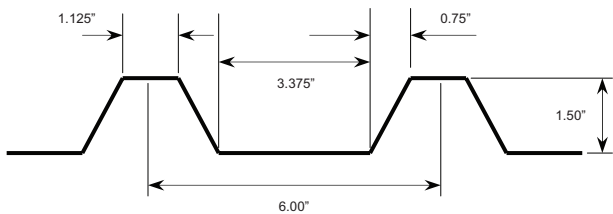
Trapezoid 1109 - 1/2" Deep, 6" OC



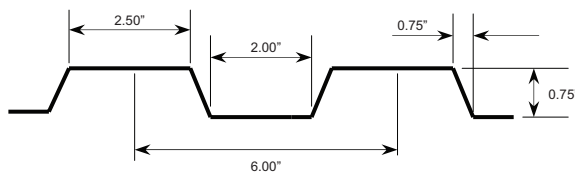
Trapezoid 1110 - 3/4" Deep, 4" OC



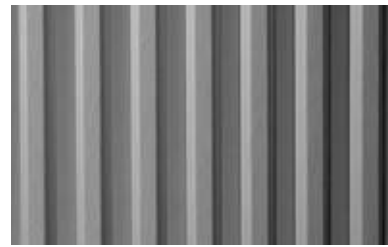
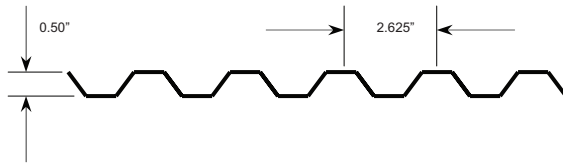
Trapezoid 1111 - 1-1/2" Deep, 6" OC



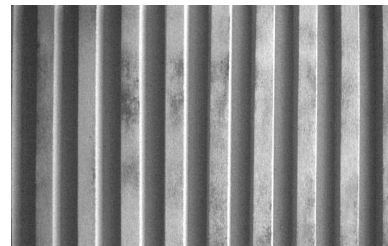
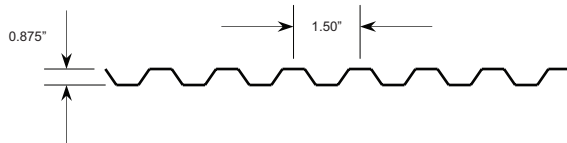
Trapezoid 1112 - 3/4" Deep, 6" OC



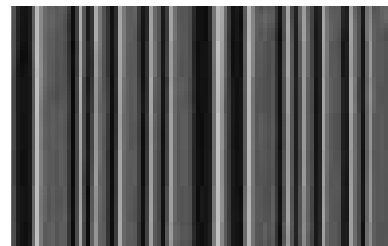
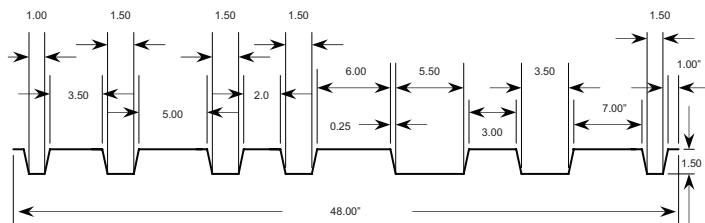
Trapezoid 1113 - 1/2" Deep, 2-5/8" OC



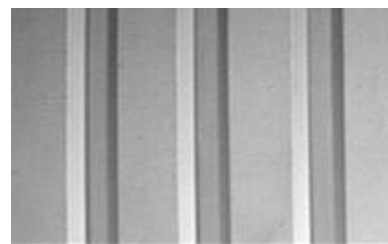
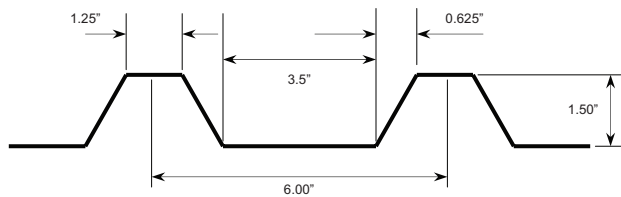
Trapezoid 1114 - 7/8" Deep, 1-1/2" OC



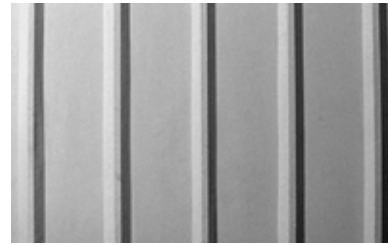
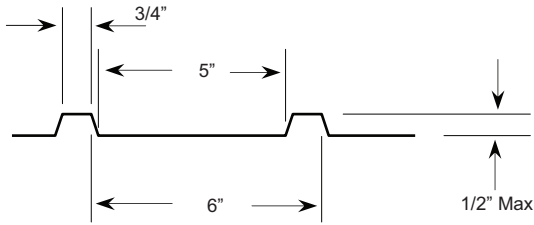
Trapezoid 1116 - ADOT Random Rib 1-1/2" Deep



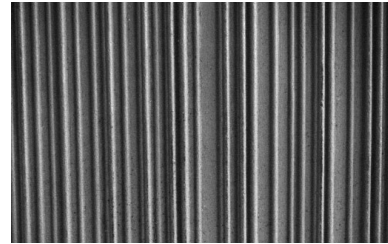
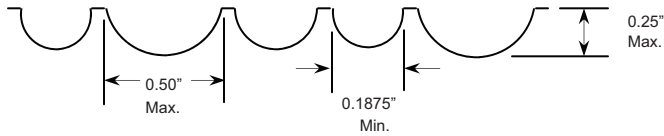
Trapezoid 1117 - 1-1/2" Deep, 6" OC



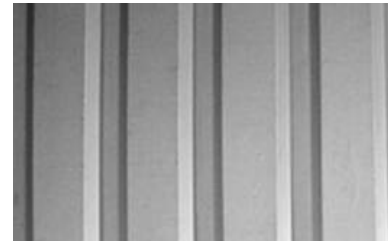
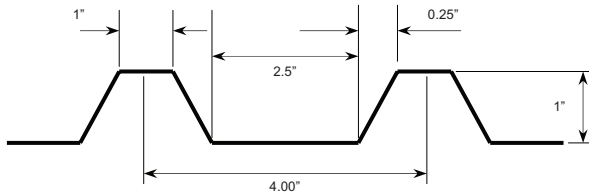
Trapezoid 1121 - 1/2" Deep, 6" OC



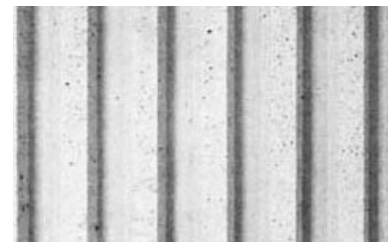
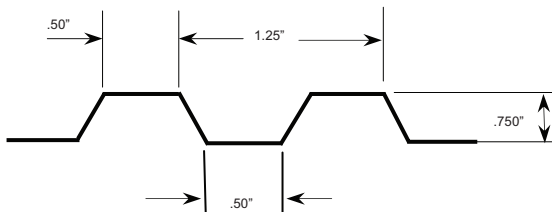
Trapezoid 1122 - Random Striations



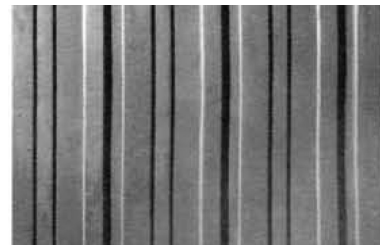
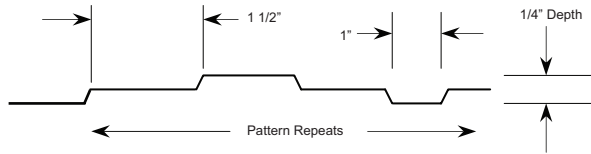
Trapezoid 1127 - 1" Deep, 4" OC



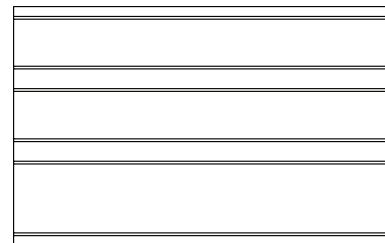
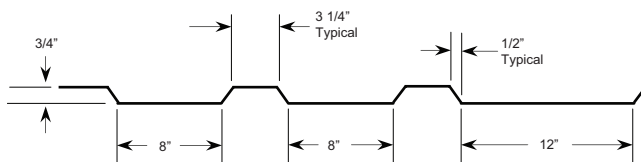
Trapezoid 1138 - 3/4" Deep, 1-1/4" OC



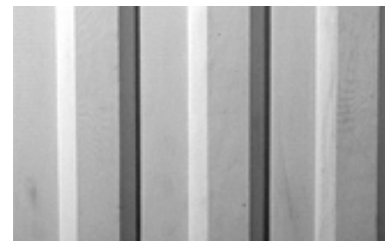
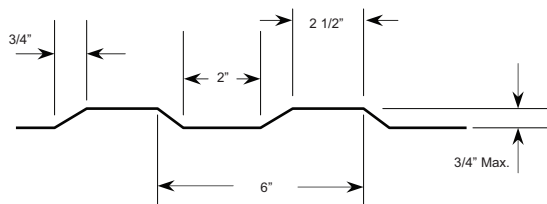
Trapezoid 1153 - 1/4" Deep Tri-Level



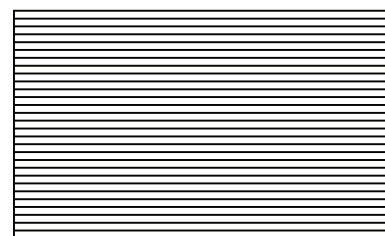
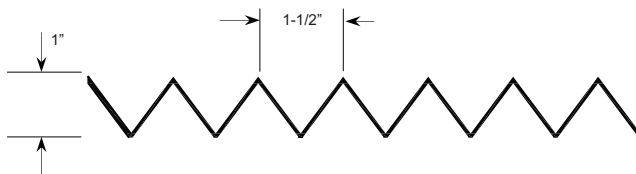
Trapezoid 1156 - 3/4" Deep Rib



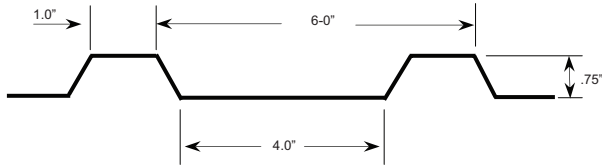
Trapezoid 1180 - 3/4" Deep, 6" OC



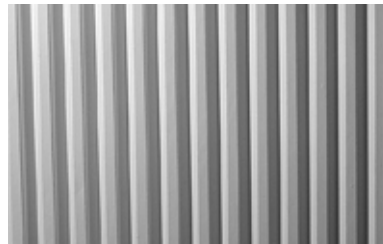
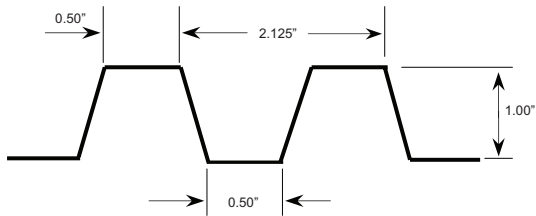
Trapezoid 1181 - Saw Tooth 1" Deep Rib, 1-1/2" OC



Trapezoid 1195 - 3/4" Deep, 6" OC



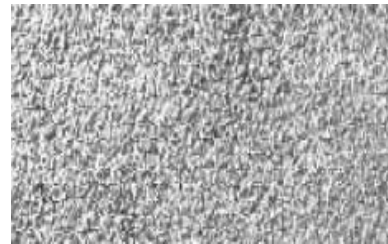
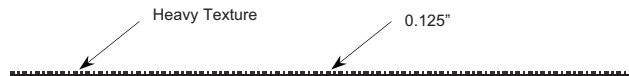
Trapezoid 1196 - 1" Deep, 2-1/8" OC



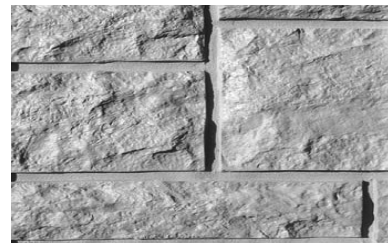
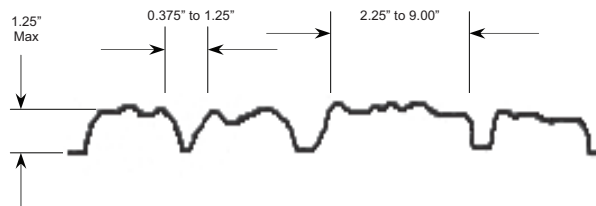
Stone 1200 - Light / Medium Sandblast



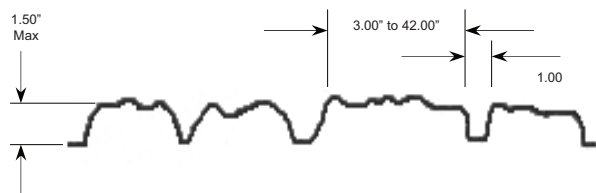
Stone 1201 - Heavy Sandblast



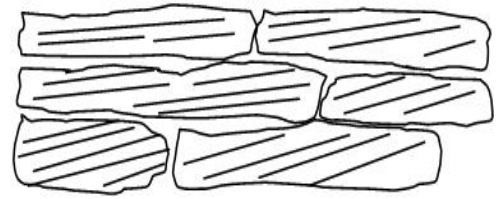
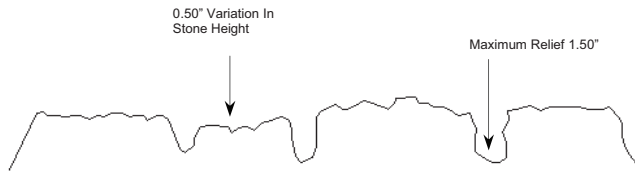
Stone 1202 - 1-1/4" Random Ashlar Stone



Stone 1203 - 1-1/2" Random Ashlar Stone



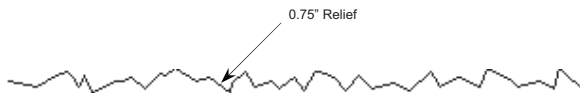
Stone 1204 - Dry Stack



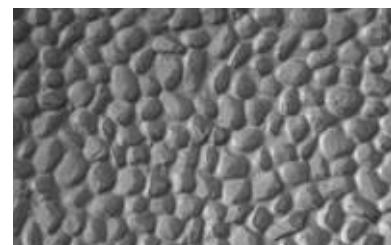
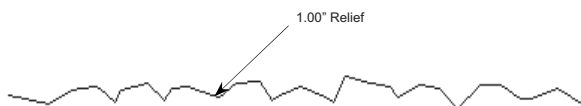
Stone 1205 - 3/4" Aggregate



Stone 1206 - 3/4" Deep Fractured Concrete



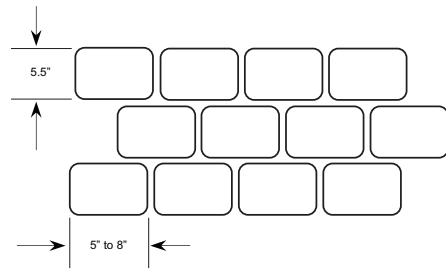
Stone 1207 - 1" Quartz



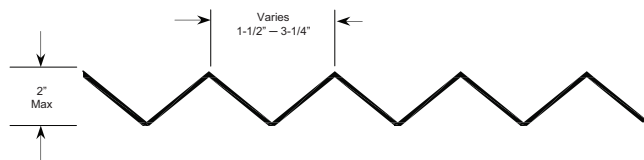
Stone 1209 - 3/4" Fractured Granite



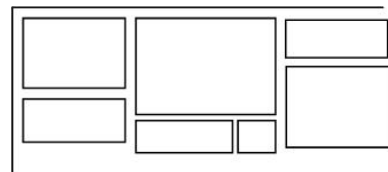
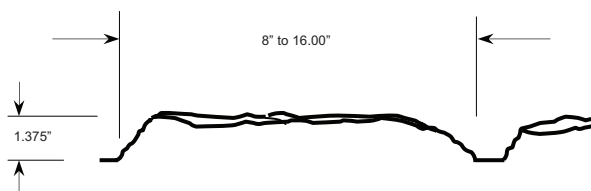
Stone 1210 - London Cobble Stone



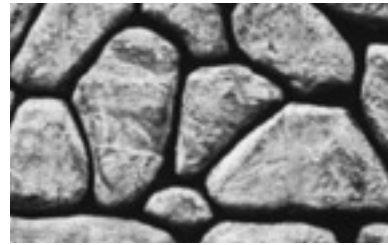
Stone 1212 - Oregon Basalt



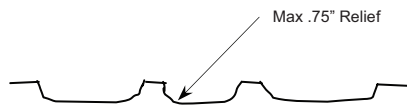
Stone 1232 - Rustic Random Ashlar



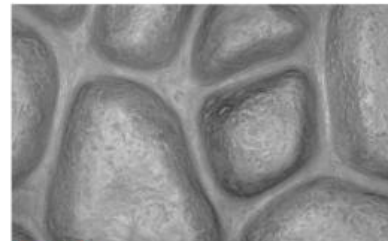
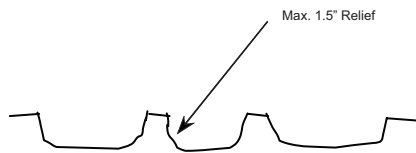
Stone 1239 - Random Fieldstone



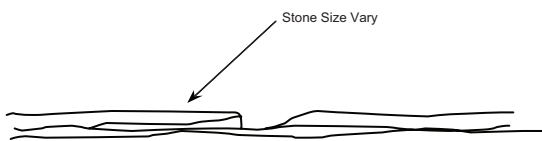
Stone 1240 - Random River Rock 3/4" Deep



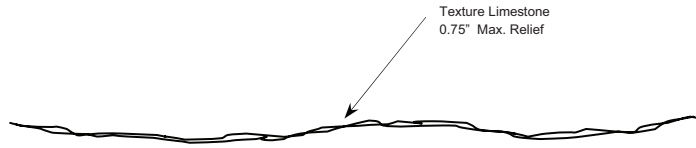
Stone 1241 - Random River Rock 1-1/2" Deep



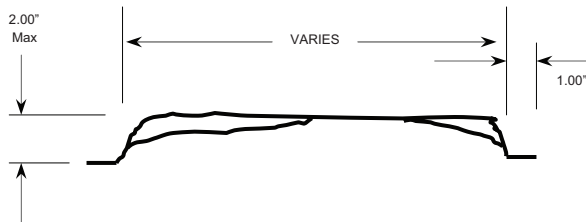
Stone 1255 - Vertical Flagstone



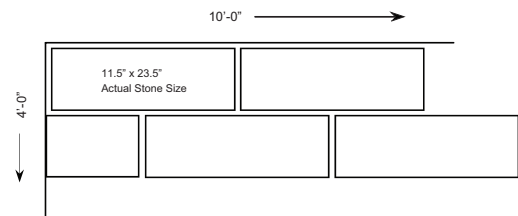
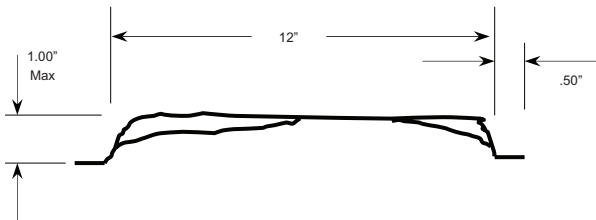
Stone 1265 - Limestone



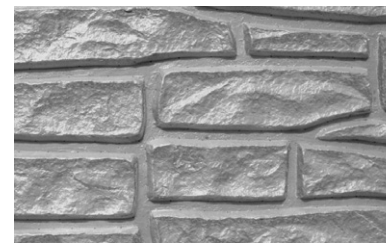
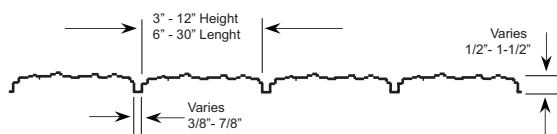
Stone 1266 - 2" Random Ashlar Stone



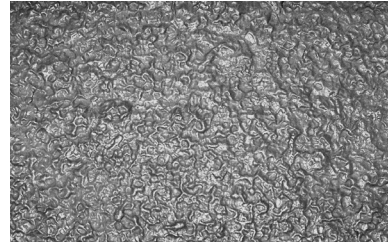
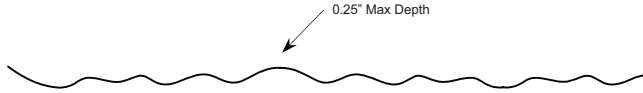
Stone 1273 - Runningbond Ashlar Stone



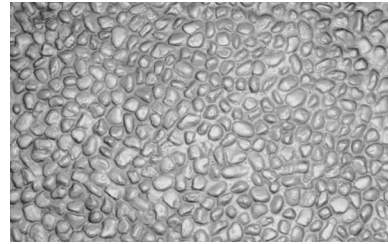
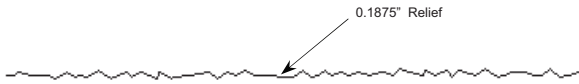
Stone 1280 - Random Drystack



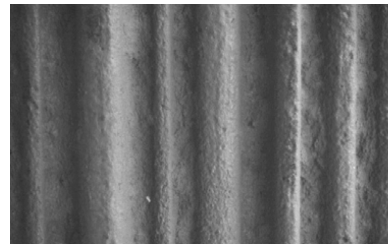
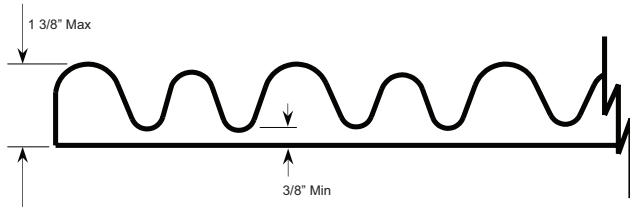
Stone 1281 - Bush Hammer



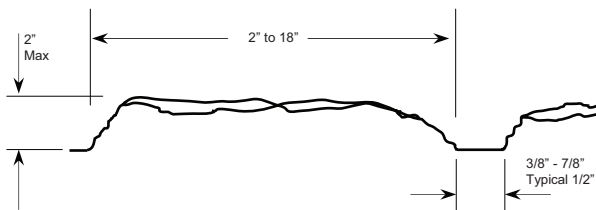
Stone 1285 - Pea Gravel



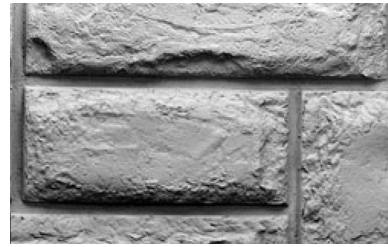
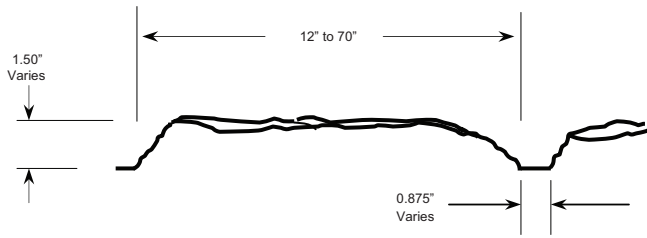
Stone 1290 - Phoenix Limestone



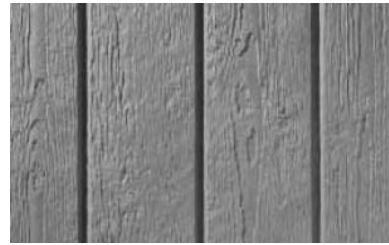
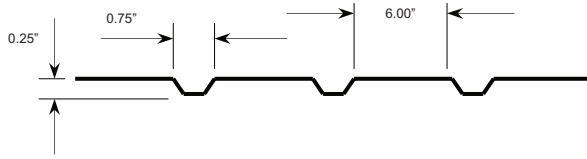
Stone 1295 - Sierra Drystack



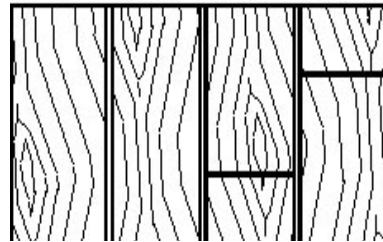
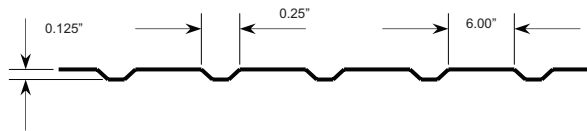
Stone 1296 - Long Island Ashlar



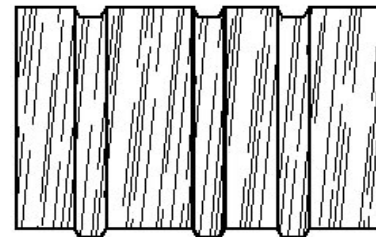
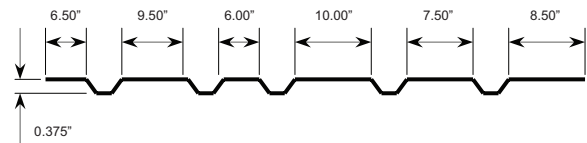
Wood 1300 - 1/4" Deep, 6" OC Grain



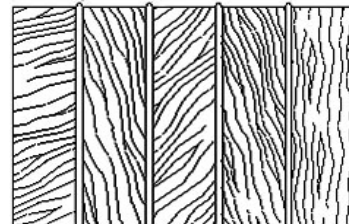
Wood 1301 - 1/8" Deep, 6" OC Pine Random Butt



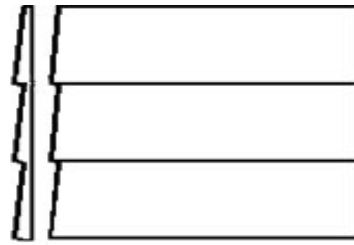
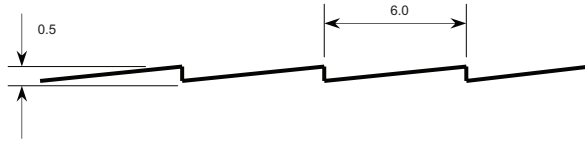
Wood 1302 - 3/8" Rough Sawn Random Boards



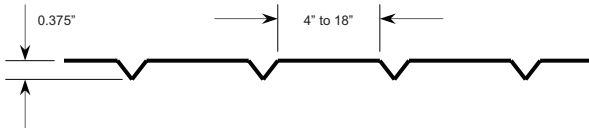
Wood 1303 - 1/4" Deep Cedar Plank, No Reveal



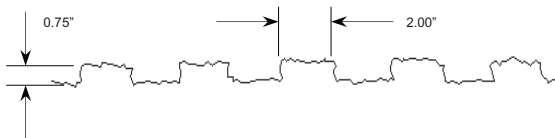
Wood 1304 - 1/2" Deep, 6" Smooth Shiplap



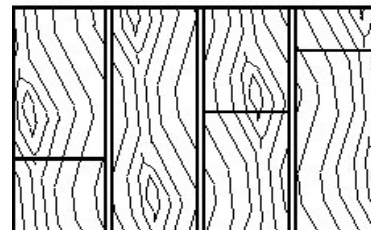
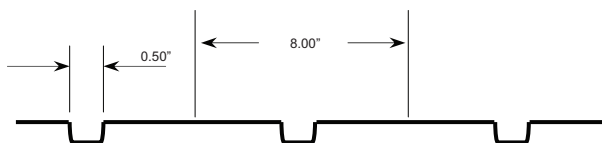
Wood 1305 - Barnwood



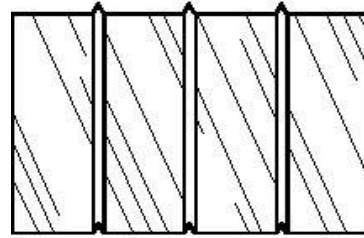
Wood 1306 - 3/4" Deep, 2" Cedar Grapestakes



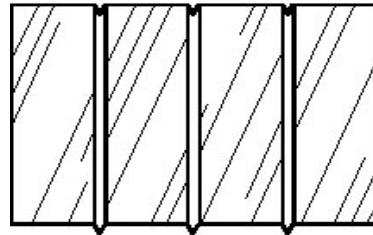
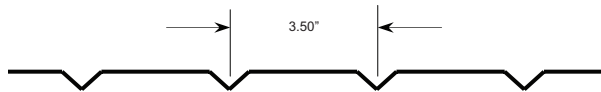
Wood 1308 - 8" OC Light Grain Random Butt Joints



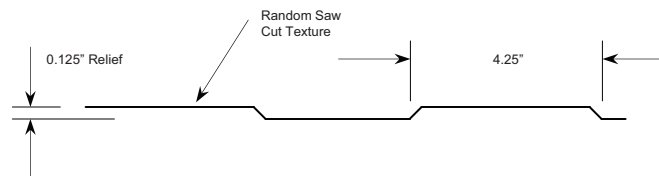
Wood 1309 - 3-1/2" OC Light Grain Protruding Reveal



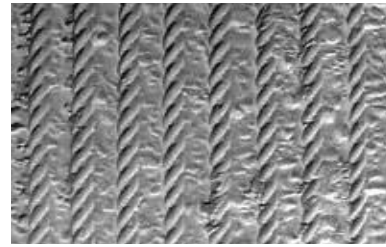
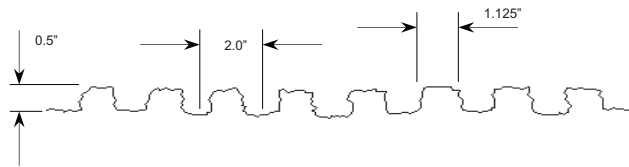
Wood 1310 - 3-1/2" OC Light Grain Random Butt Joints



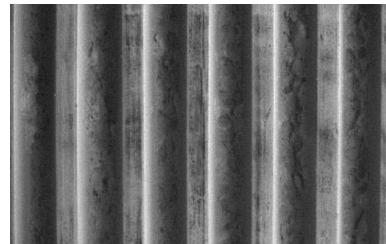
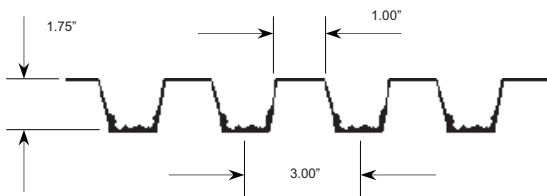
Wood 1345 - Extra Rough Sawn Plank



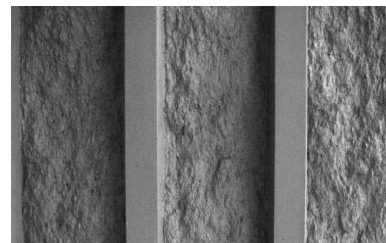
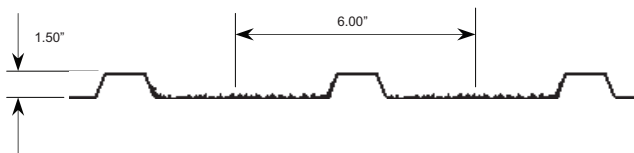
Fractured 1400 - 1/2" Rope



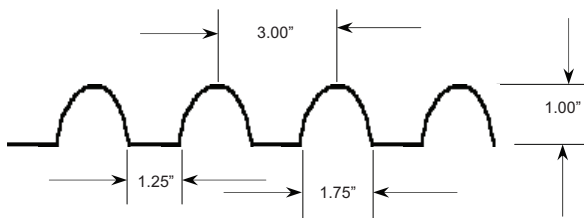
Fractured 1401 - 1-3/4" Deep, 3" OC Rib



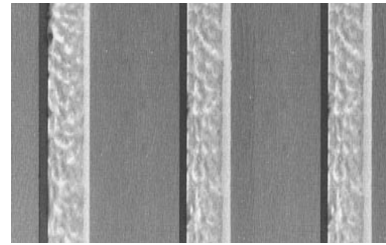
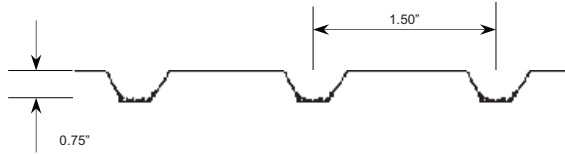
Fractured 1403 - 1-1/2" Deep, 6" OC Rib



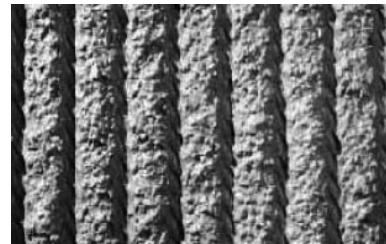
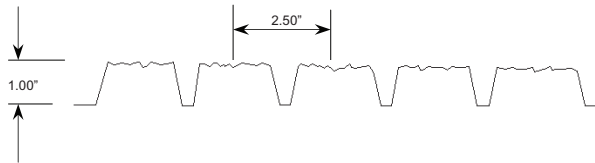
Fractured 1404 - 1" Deep, 3" OC Rib



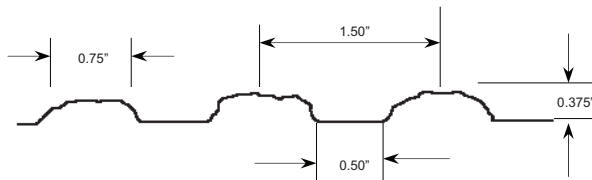
Fractured 1405 - 3/4" Deep, 1-1/2" OC Fin



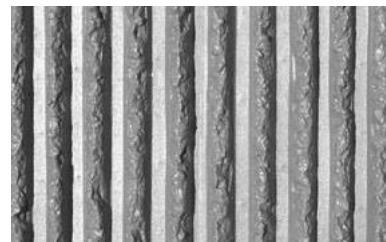
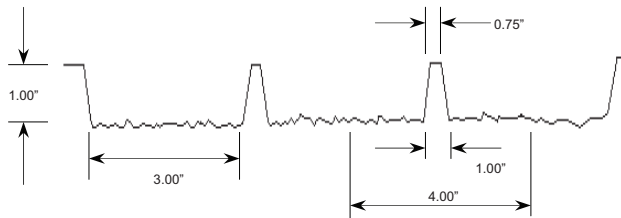
Fractured 1406 - 1" Deep, 2-1/2" OC Rib



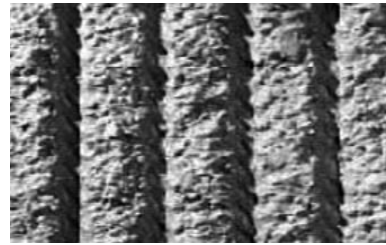
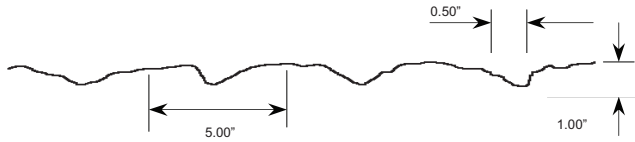
Fractured 1407 - 3/8" Deep, 1-1/2" OC Rib



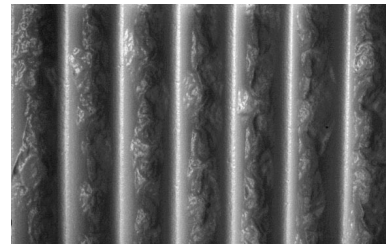
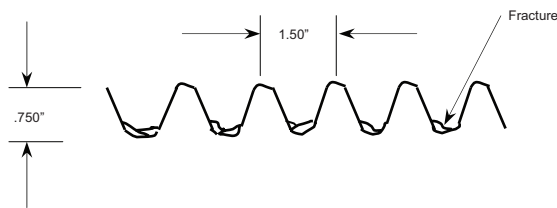
Fractured 1408 - 1" Deep, 4" OC 3" Split Face Rib



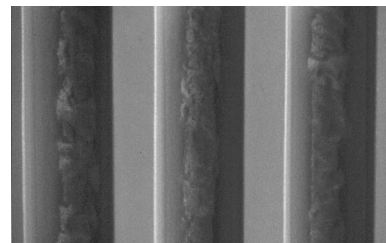
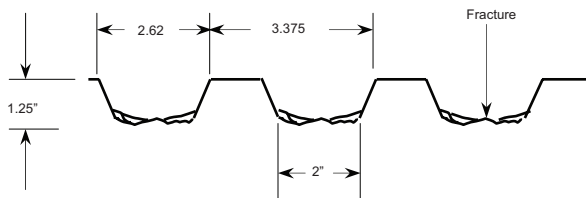
Fractured 1410 - 1" Deep, 5" OC Ripper Rebar



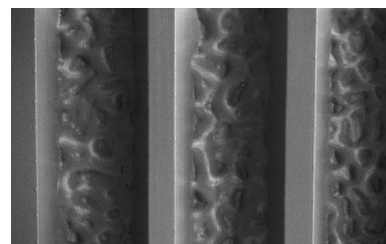
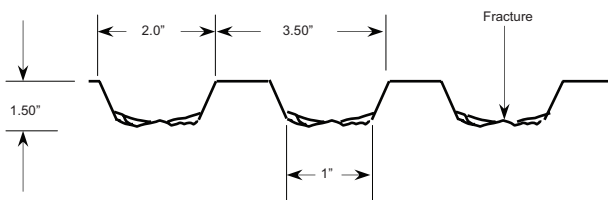
Fractured 1412 - 3/4" Fin, 1-1/2" OC



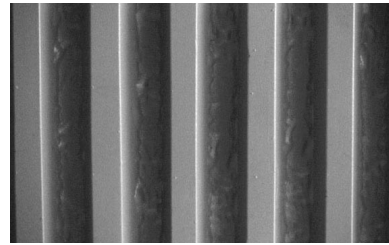
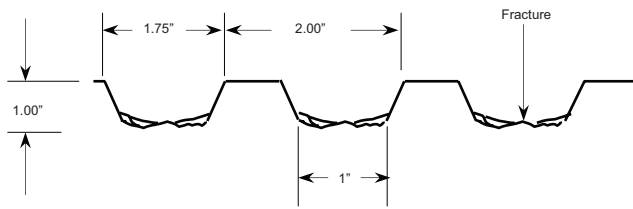
Fractured 1422 - 1-1/4" Fin, 3-3/8" OC



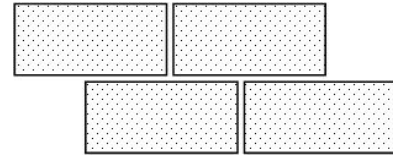
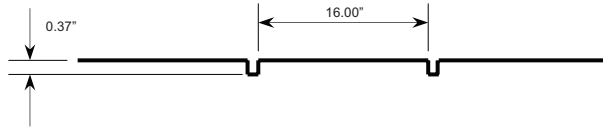
Fractured 1432 - 1-1/2" Fin, 3-1/2" OC



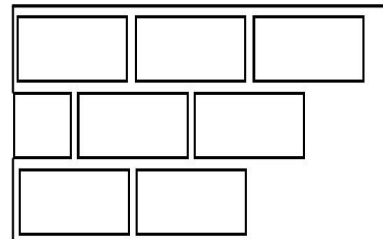
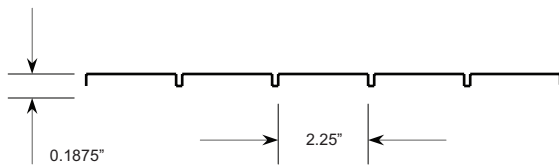
Fractured 1442 - 1" Fin, 2" OC



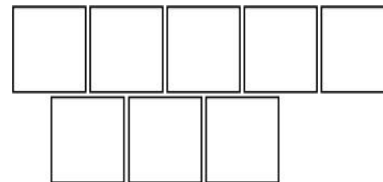
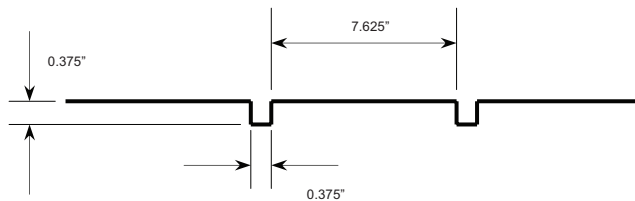
Masonry 1500 - 3/8" Deep, 8"x16" Cinder Block



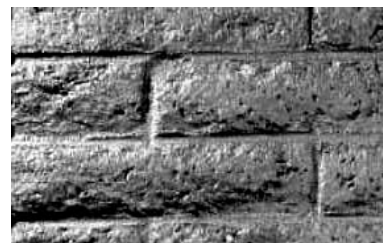
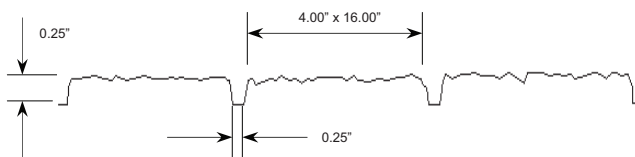
Masonry 1501 - 2-1/4"x7-1/2" English Brick



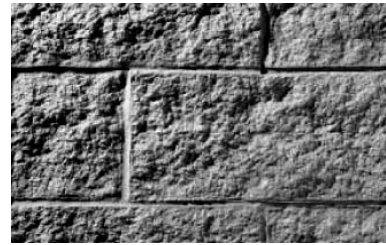
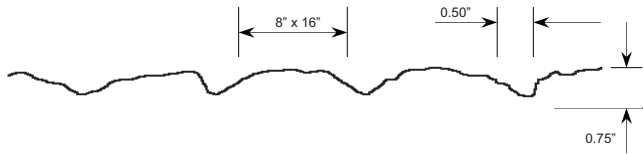
Masonry 1502 - 8"x8" Split Face Block



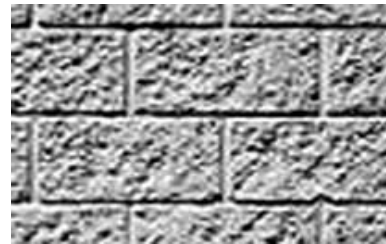
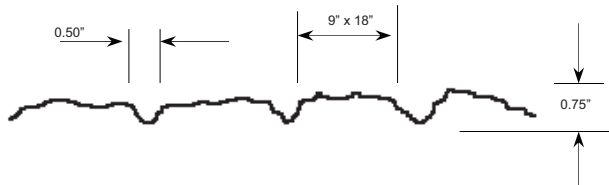
Masonry 1506 - 1/2" Deep, 4"x16" Slump Block



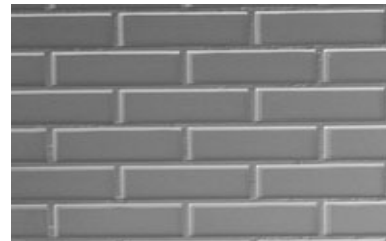
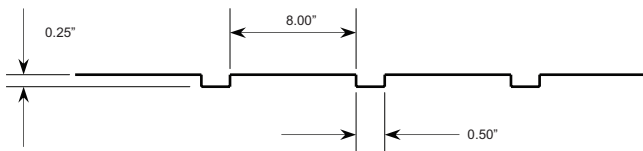
Masonry 1507 - 3/4" Deep, 8"x16" Textured Block



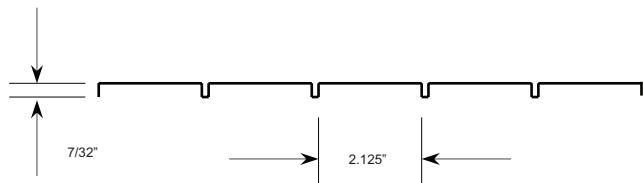
Masonry 1508 - 3/4" Deep, 9"x18" Split Face Block



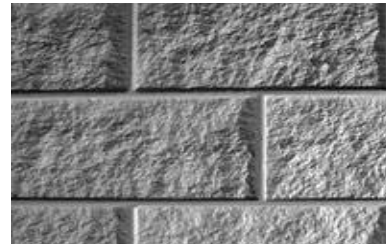
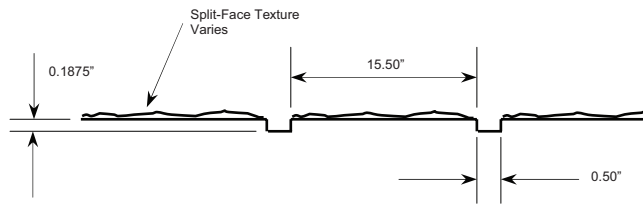
Masonry 1509 - 1/4" Deep, 2-1/2"x8" Smooth Brick



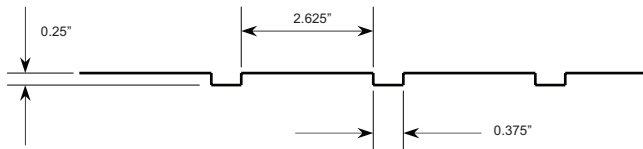
Masonry 1510 - 2-1/8"x7-1/2" Wire Cut Brick



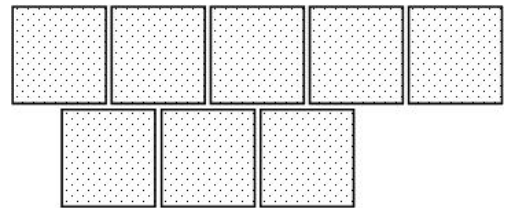
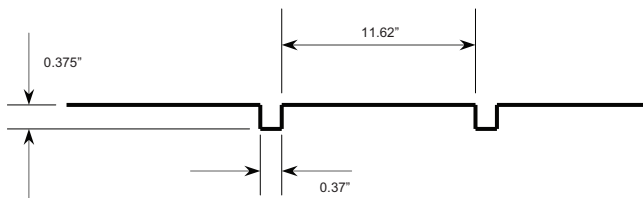
Masonry 1516 - 3/16" Deep, 8"x16" Split Face Block



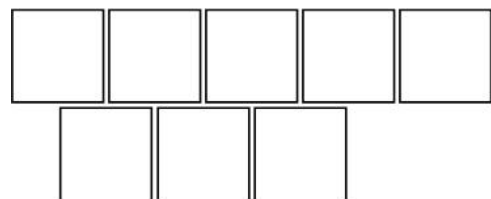
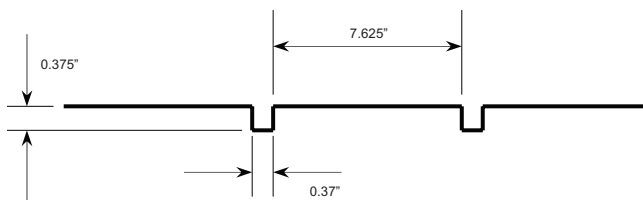
Masonry 1519 - 2-5/8"x7-5/8" Smooth Block Running Bond



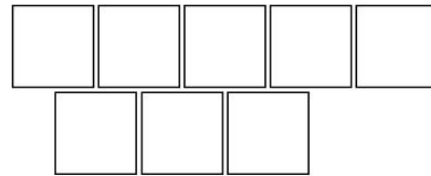
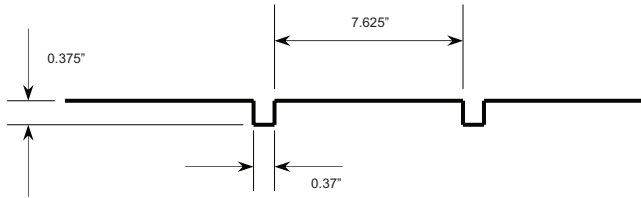
Masonry 1520 - 12"x12" Split Face Granite Block



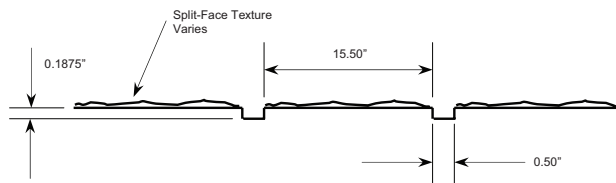
Masonry 1522 - 8"x8" Smooth Face Block



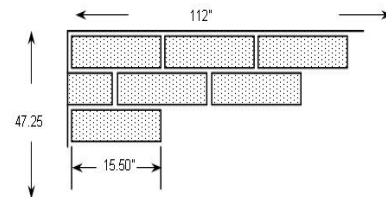
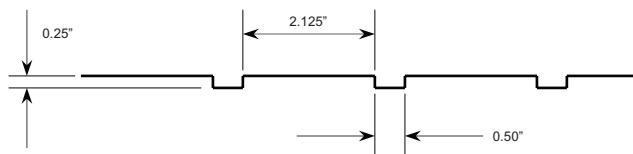
Masonry 1523 - 8"x8" Scored Smooth Face Block



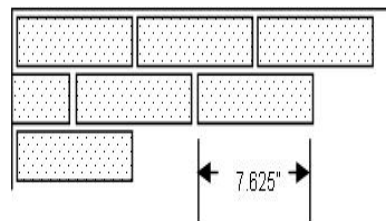
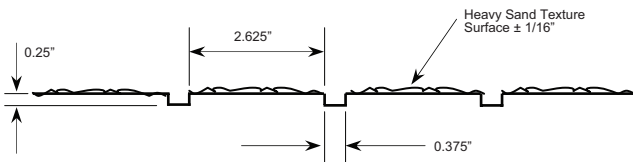
Masonry 1526 - 3/16" Deep, 8"x16" Split Face Block Stacked



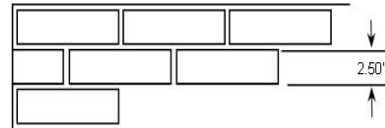
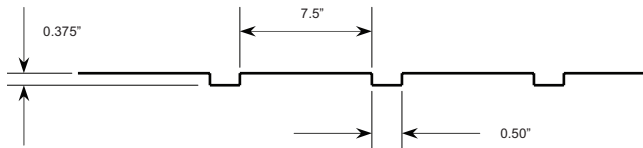
Masonry 1529 - 16"x2-5/8" Split Face Block



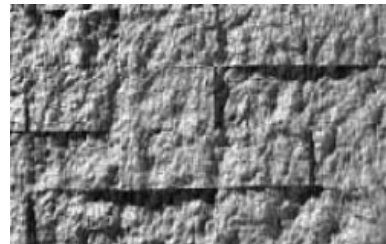
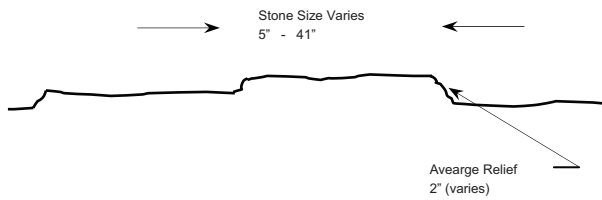
Masonry 1539 - 2-5/8"x7-5/8" Sand Cast Brick



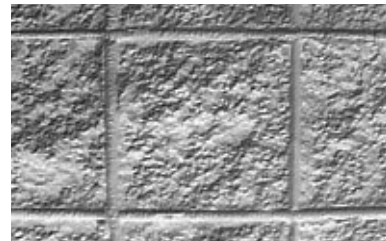
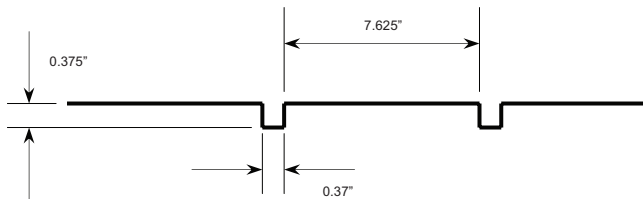
Masonry 1549 - 2-1/2"x7-1/2" Smooth Brick



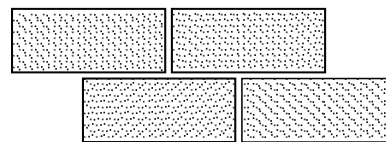
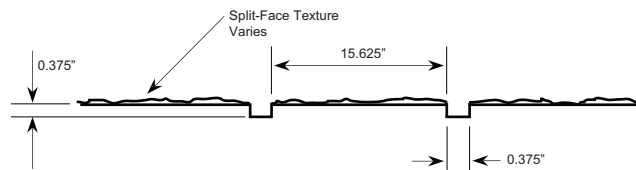
Masonry 1550 - Random Drystack



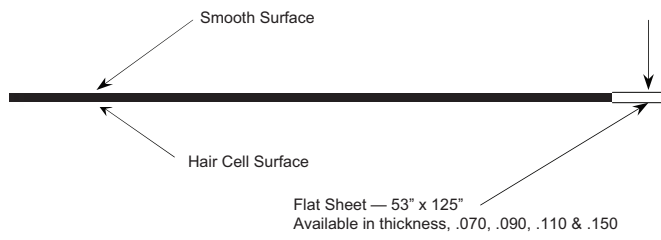
Masonry 1560 - 8"x8" Stacked Bond Block



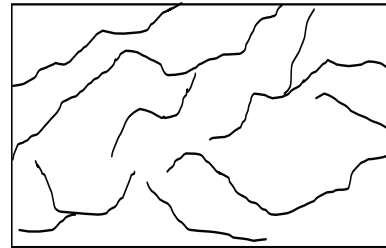
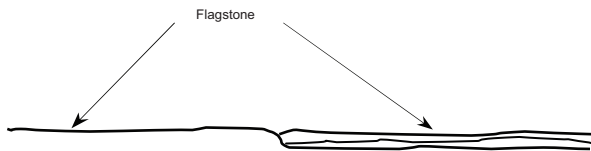
Masonry 1577 - Custom Split-Face Block



Other 1600 - 53"x125" Smooth Face



Other 1603 - 1/2" Maximum Depth Flagstone



Technical Data

Thermofrom

HIPS - High Impact Polystyrene

ABS - Acrylonitrile Butadiene Styrene

Elastomeric

PE - Polyurethane Elastomer

PPE - Premium Polyurethane Elastomer

Standard Formliners

HIPS Formliners can be used to provide a textured concrete surface, in a limited application, at an affordable price. Single use only.

ABS Formliners exhibit impact resistance and UV shielding to reduce the damaging effects of sunlight. Multiple uses up to 10 times.

Premium Multi-Use Formliners

PE Formliners combine great resilience and high-tensile strength into a long-wearing surface. Multiple uses up to 40-50 times.

PPE Formliners provide exceptional reproduction of the most difficult and complex designs for a consistent appearance. Multiple uses up to 100+ times.

HIPS - High Impact Polystyrene (Single use only)		
Properties	Rating	ASTM
IZOD Impact, ft.-lb/in.		
@70°F	2.0	D256
@0°F	1.3	D256
Tensile Strength	3,700 psi	D638
Heat Deflection	188	D695
Vicat Softening	212	D1525
Wt.lb./sq.ft.		
.070 mil	.449	
.090 mil	.577	
.110 mil	.705	
.130 mil	.833	
.150 mil	.966	

ABS - Acrylonitrile-Butadiene Styrene (Multiple uses up to 10 times)		
Properties	Rating	ASTM
IZOD Impact, ft.-lb/in.		
@73°	5.6	D256
@0°	1.9	D256
Tensile Strength	5,300 psi	D638
Heat Deflection		
@264 psi	199	D648
@66 psi	211	D648
Falling Dart Impact, ft.-lb.		
@73°F	23	
@40°F	14	
Specific Gravity	1.05	D792
Wt. lb./sq.ft.		
.070 mil	.451	
.090 mil	.580	
.110 mil	.705	
.130 mil	.833	
.150 mil	.961	

PE - Polyurethane Elastomer (Multiple uses up to 40-50 times)		
Properties	Rating	ASTM
Shore A Hardness	45-50	D2240
Tear Strength, PLI	55	D624
Tensile Strength, psi	500	D638 (D412)
Ultimate Elongation	240%	D638 (D412)

PPE - Premium Polyurethane Elastomer (Multiple uses up to 100+ times)		
Properties	Rating	ASTM
Shore A Hardness	60-65	D2240
Tear Strength, PLI	120	D624
Tensile Strength, psi	1150	D638 (D412)
Ultimate Elongation	1200%	D638 (D412)

Manufacturing Tolerances @ 70F (All patterns, all materials)
Standard size: 4'x10'
Length: +1" to 2", -0" (shipped long for field trimming)
Width: ± 1/4"
Thickness: ± 1/16" at edge (except formliners over 1" thick)
Custom size: At customer request, additional charge.

American Formliners Warranty

American Formliners Inc. (hereafter known as Supplier) warrants that the Supplier of concrete accessory products sold to Purchaser will be free from defects in materials and workmanship for a period of six (6) months from the date of delivery, and the Supplier will repair, or in its sole discretion, replace, any Product or part thereof found to be defective at the time of delivery if such Product or part is returned (at Purchaser's expense and risk) and received by the Supplier within ten (10) days after the applicable warranty period. Descriptions, representations and other information concerning the Supplier contained in the Supplier's catalogs, advertisements or other promotional materials or statements or representations made by the Supplier's sales agents or representatives shall not be binding upon the Supplier and shall not be part of this limited warranty unless expressly identified in writing as PRODUCT SPECIFICATIONS.

This limited warranty does not cover normal maintenance, or items consumed during installation or normal operations, normal wear and tear, use under circumstances exceeding specifications, use for purposes other than the use for which the Products were intended, abuse, unauthorized repair or alteration, improper installation, failure to follow the Supplier's printed instructions, guidelines and recommendations for installation and use, lack of proper maintenance or damage caused by natural causes such as fire, storm, or flood. Purchaser shall determine the suitability of the Product for his intended use and Purchaser assumes all liabilities and risks whatsoever in connection therewith.

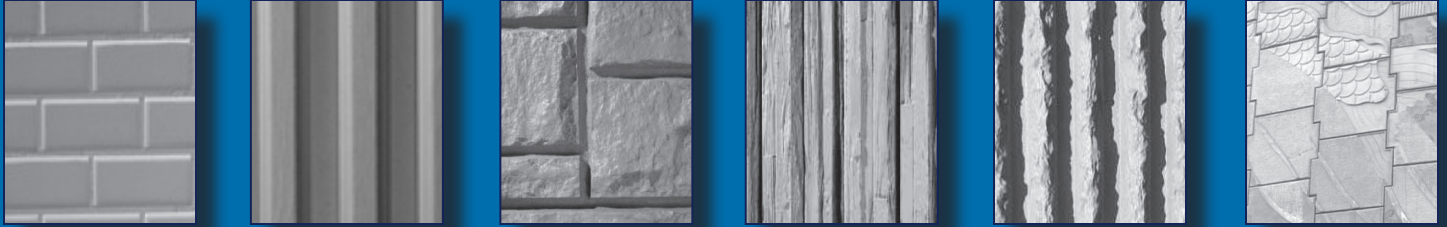
This limited warranty is Purchaser's exclusive remedy. It shall not be deemed to have failed of its essential purpose so long as the Supplier is willing and able to repair or replace defective products or parts thereof in the manner specified. No allowance will be made or repairs made by Purchaser.

Except as herein provided, the Supplier shall not be liable to Purchaser in any manner with respect to the Products. In no event shall the Supplier liability to Purchaser ever exceed the purchase price of the allegedly defective Product. Except as herein provided, the Supplier shall not be liable for transportation, labor or other charges for adjustments, repairs, replacements of parts, installation, or other work, which may be done upon or in connection with the Products sold.

THE SUPPLIER SHALL NOT IN ANY EVENT BE LIABLE FOR INCIDENTAL OR CONSEQUENTIAL DAMAGES OF ANY NATURE WHATSOEVER, INCLUDING LOST PROFITS, whether arising from any defect in the Products, any use of the Products, from Purchaser's inability to use the Products, or otherwise. This limited warranty applies to only products made by the Supplier.

NO OTHER EXPRESS AND NO IMPLIED WARRANTIES OF ANY TYPE, WHETHER FOR MERCHANTABILITY, FITNESS FOR A PARTICULAR USE, OR OTHERWISE, OTHER THAN THOSE EXPRESSLY SET FORTH ABOVE (WHICH ARE MADE EXPRESSLY IN LIEU OF ALL OTHER WARRANTIES) SHALL APPLY TO THE PRODUCTS.

Leave a lasting impression in concrete with American Formliners!



AMERICAN FORMLINERS PROVIDES THESE ADVANTAGES:

- State-of-the-art manufacturing by an industry-trusted name
- Single-use, multi-use and extended-use material options
- Hard-to-find pattern lengths for greater forming versatility
- End-to-end and side-to-side matching for seamless appearance
- Cost-effective material pricing with nationwide availability
- Custom design capability for unique forming applications

**American
Formliners**

645 Airport Road • Centralia, IL 62801 • 877-533-5842 • Fax 618-533-5840

www.americanformliners.com © 04/18