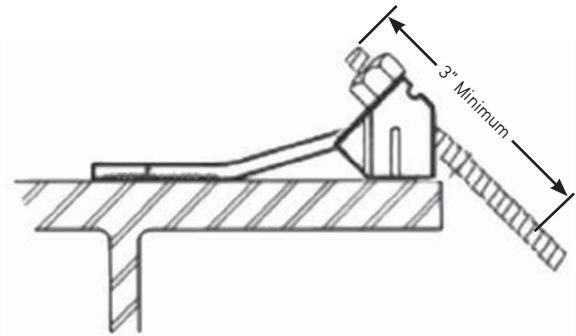


## C24 Pres-Steel Steel Beam Half Hangers

C24 Pres-Steel Steel Beam Half Hangers are produced using a single end clip welded to a formed wire strut and are used where conditions prevent the use of regular exterior hangers.

Type S Half Hangers are designed for use on steel beams. The standard Type S Half Hanger uses a wire strut that measure 6" from the center line of the bolt to the end of the strut.



Typical Steel Beam Application

## C24 Pres-Steel Concrete Beam Half Hanger

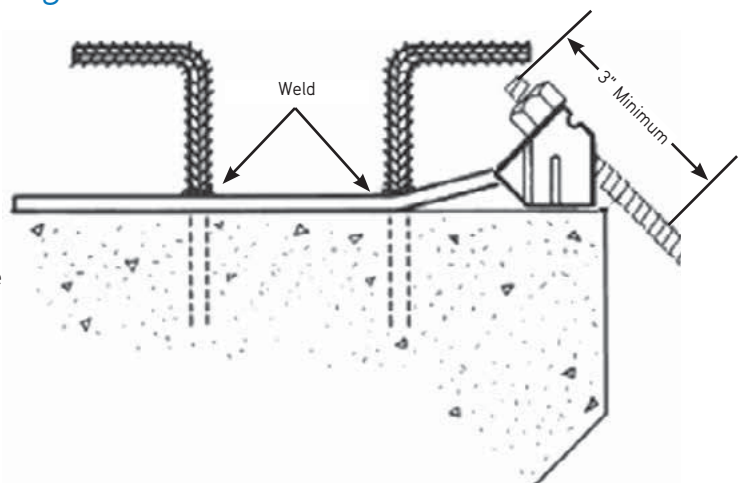
The Type C Pres-Steel Half Hanger used on concrete beams are the same as the above Half Hangers with the exception of the standard wire strut length.

These concrete beam half hangers are designed to be welded to the rebar shear connectors that extend from the top surface of a precast concrete girder.

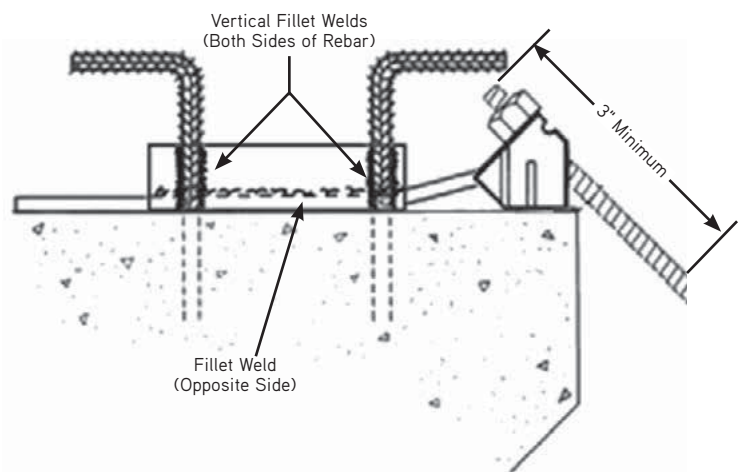
More weld and hanger capacity can be achieved by welding a suitably sized steel plate to the rebar shear connectors, using four vertical fillet welds, to weld the plate to the share connectors. Then weld the strut wire to the steel plate. May be applied to steel beams by welding to the shear connector studs.

This application is shown in the Special Precast Concrete Girder Application to the right.

Please see the General and Technical Section of this handbook for additional information on field welding of half hangers.



Typical Precast Concrete Girder Application



Special Precast Concrete Girder Application