

## TECHNICAL DATA SHEET

### DESCRIPTION

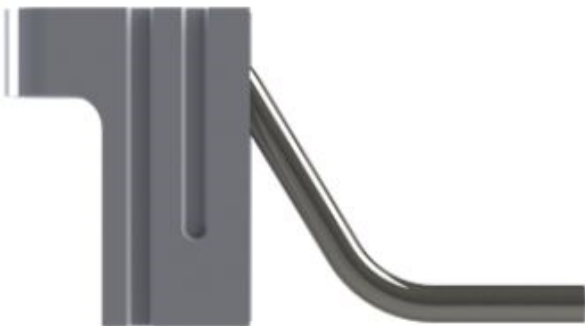
Our C24 Pres-Steel Half Hanger are interior form hangers that consist of a U shape end clip welded to a jogged wire strut

### APPLICATION

C24 are designed to be welded to top of steel beam or by a suitable sized steel plate welded to vertical shear connectors that extend up from the top surface of a precast concrete girder to construct temporary formwork.

### PRODUCT SPECIFICATION

- Concrete (C) and Steel (S) beam
- 2 to 1 safety factor
- 2,375 lb. safe work load
- Available: Epoxy Coated, Hot Dip Galvanize



### FEATURES

- Jogged strut configuration
- 90° end clip position
- Available; standard or custom lengths

### BENEFITS

- Applied for steel or precast concrete beam

### HOW TO SPECIFY

Pres-Steel half hangers shall be supported as manufactured by Dayton Superior Corporation.

### Technical Cata

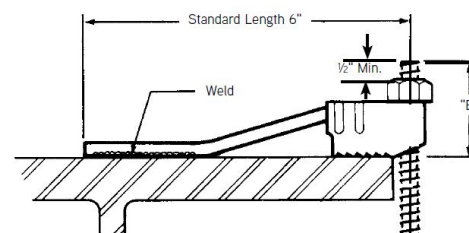
#### Pres-Steel Half Hanger

Type	Strut Config.	Standard Length	SWL (lbs)	B Dimen.	Interior / Exterior
7-C	Jogged	9"	2,375	3-1/2"	Interior
7-S	Jogged	6"	2,375	3-1/2"	Interior

### INSTALLATION

1. It is recommended that the user contact his local welding supply dealer for assistance in determining the required welding procedures.
2. Please see General and Technical Section in our Bridge Deck Handbook for additional information on field welding of half hangers
3. In situations where a bridge contractor does not have a qualified person on staff to calculate hanger and bracket spacing, Dayton Superior's Technical Assistance personnel are trained to provide such service. Additionally, they are able to provide bridge deck accessory take-offs and detailed drawings to the users of Dayton Superior bridge deck products. These services are provided at a nominal charge.
4. For safety, bridge deck accessories must be properly used and maintained. The user is advised that incorrect utilization of bridge deck formwork accessories, insufficient bolt penetration through a coil nut, or altering a product in any way can result in premature failure and expose workers to unsafe conditions. Reusable bridge deck forming accessories such as coil bolts, coil rods, etc., are subject to wear, misuse, overloading, corrosion, deformation, alteration and other factors that may affect safe working loads. It is the responsibility of the user to inspect reusable accessories for wear and/or misuse and to discard them if wear or misuse is detected. Dayton Superior recommends that all users of Dayton Superior reusable bridge deck forming products establish a quality control program to monitor and inspect their bridge deck forming accessories. The frequency of inspections is best determined by the user and is dependent on the type of product use, frequency of use, duration of use and the environmental conditions during use. Do not straighten bent forming accessories – discard them. Discard any reusable forming accessory that has been subjected to 70% or more of its ultimate load. Such items may have exceeded the yield value of the material and may have become brittle and hard. Extreme care must be exercised when field welding half hangers. Incorrectly made field welds may alter the strength and may limit the half hanger to a lower safe working load than its published maximum safe working load. Field tests should be always conducted to verify hangers actual safe working load.

### INSTALLATION



Typical Steel Beam Application

## TECHNICAL DATA SHEET

### RELATED PRODUCTS

- B12 Continuous Coil Threaded Rod
- B13 Coil Nut
- C25 Pres-Steel Adjustable Half Hanger
- C60 Pres-Steel Hanger
- C63 Pres-Steel Hook Half Hanger
- C65 Adjustable Joist Hanger
- C68 Ty-Down Half Hanger

### HOW TO ORDER

- Specify:
  1. Quantity
  2. Name
  3. Strut Length

### ORDERING INFORMATION

#### TYPE S HALF HANGERS FOR STEEL BEAMS

Product Code	Description	Weight
43218	7-S 6" X 90 DEG	0.52 LB

### MANUFACTURER

Dayton Superior Corporation  
 1125 Byers Road  
 Miamisburg, OH 45342  
 Customer Service: 888-977-9600  
 Technical Services: 877-266-7732  
 Website: [www.daytonsuperior.com](http://www.daytonsuperior.com)

### WARRANTY (ACCESSORIES)

Limited Warranty. Dayton warrants, for a period of 60 days from the date of shipment (three years from the date of shipment in the case of formwork, excluding any consumable Products included with such formwork), that Products and any associated application drawings and engineering services provided by Dayton ("Ancillary Services") will be free from defects in material and workmanship and, in the case of custom designed formwork, that the formwork will meet the specifications set forth in the design drawings approved by Dayton and Customer. Any claim under this warranty must be made in writing within such warranty period. If any Product and/or Ancillary Service covered by a timely claim are found to be defective, Dayton will, within a reasonable time, make any necessary repairs or corrections or, at Dayton's option, replace the Product. Unless pre-authorized by Dayton in writing, Dayton will not accept any charges for correcting defects or accept the return of any Product. This warranty will not apply to any Products that have been subjected to misuse, neglect, storage damage, misapplication, accident or any other damage caused by any person other than Dayton, or that have not been maintained in accordance with Dayton's specifications. THIS LIMITED WARRANTY IS IN LIEU OF ALL OTHER WARRANTIES AS TO THE PRODUCTS AND ANCILLARY SERVICES. DAYTON MAKES NO OTHER WARRANTIES OR GUARANTEES, EXPRESS OR IMPLIED, INCLUDING ANY WARRANTY OF MERCHANTABILITY, FITNESS FOR A PARTICULAR PURPOSE OR OTHERWISE. THE REMEDIES SET FORTH IN THIS SECTION ARE CUSTOMER'S EXCLUSIVE REMEDY FOR BREACH OF WARRANTY.