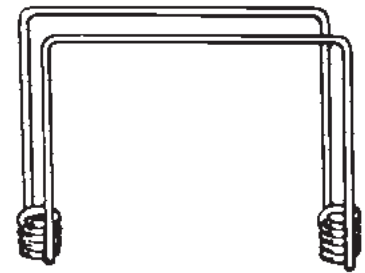


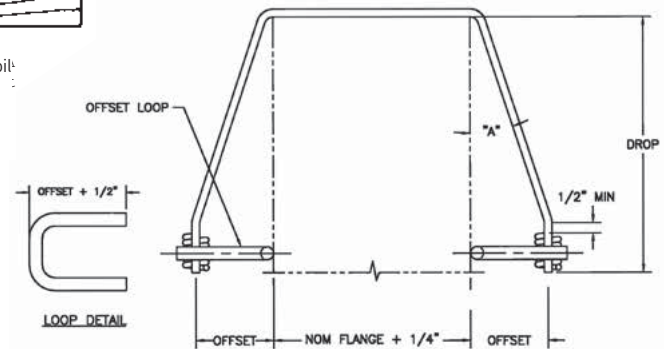
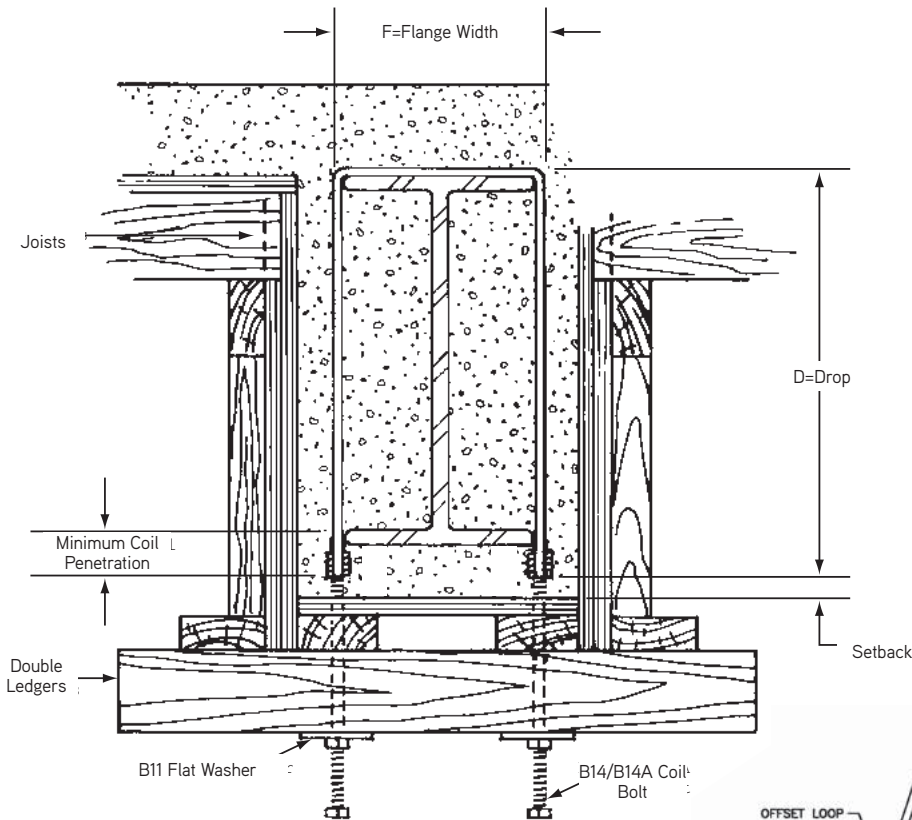
C2 Coil Hanger Saddle Type

Dayton Superior C2 Coil Hanger Saddle Type consists of a two strut coil tie shaped to fit over a structural steel beam to support fireproofing formwork.

Warning: Hanger must be equally loaded, on both sides of the beam, to prevent hanger rotation.



C2 Coil Hanger



Coil Hanger Selection Chart

Coil Bolt Diameter	Safe Working Load
1/2"	2,250 lbs./side
3/4"	5,625 lbs./side
1"	7,500 lbs./side

SWL provides a factor of safety of approximately 2 to 1.

To Order:
Specify: (1) quantity, (2) name,
(3) diameter, (4) flange width, (5) drop,
(6) leg angle if special. (7) leg length D1 if special.

Example:
500 pcs. C2 Coil Hangers, 3/4" diameter,
12" flange width, 38" drop/each side.

