

# C51 & C52 Overhang Brackets

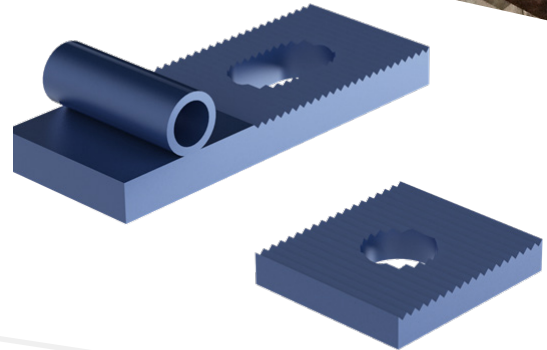
## DESCRIPTION

Dayton Superior offers the bridge contractor a variety of Bridge Overhang Bracket designs to provide maximum adjustability to meet forming requirements on both structural steel and precast/prestressed concrete beams.



## C51 - Wall Plate Assembly

The C51 Wall Plate Assembly is used to mount a C49 Overhang Bracket directly to a 3/4" diameter insert cast in a precast/prestressed concrete box girder.



C-51 Wall Plate Assembly

## C52 - Bridge Overhang Guard Rail Receptacle

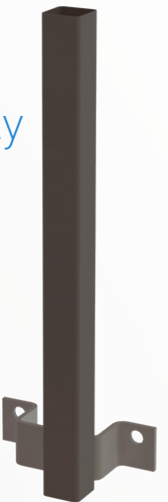
The C52 Guardrail Receptacle is designed to facilitate placement of guardrail posts on the exterior formwork. The C52 receptacle bolts securely to the C54 Bridge Overhang Bracket Extender and accepts 2x4 guardrail posts.



C-52 Bridge Overhang Guard Rail Receptacle

## C52P - Guardrail Speed Bracket Assembly

The C52P Guardrail Speed Bracket Assembly is designed for fast and easy attachment to the C49 Bridge Overhang Bracket. The C52P's Speed Bracket bolts securely to the C49 Bridge Overhang Bracket and provides a base to simply install the Guardrail Post. The Guardrail Post has a nail down feature to prevent uplift. The C52P is compatible with lumber or cable railings.



C-52 Guardrail Speed Bracket Assembly