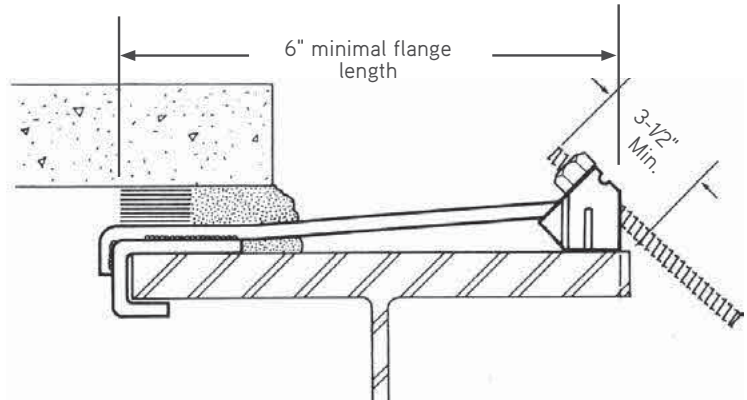


C63 Type 4-AB Pres-Steel Hook Half Hanger

Used when one-sided forming is required and field welding to the beam is prohibited. Can be furnished electroplated or hot dip galvanized after fabrication for corrosion resistance, if specified.

Type 4-AB hanger is designed for use with 1/2" diameter coil bolts. Manufactured using a 45° end clip welded to formed wire strut. The interior end of the wire strut is wrapped-around and welded to a 1/4" thick steel beam clamp. The wrapped-around wire strut reinforces and strengthens the beam clamp which slips over the flange of a steel beam anchoring the hanger.



To Order:

Specify: (1) quantity, (2) name, (3) flange width, (4) flange thickness and (5) finish.

Example:

205 pcs. C63 Type 4-AB Pres-Steel Half Hanger, for 12" wire x 1" thick flange, HDG.

Safe Working Load
5,000 lbs. for 4-AB

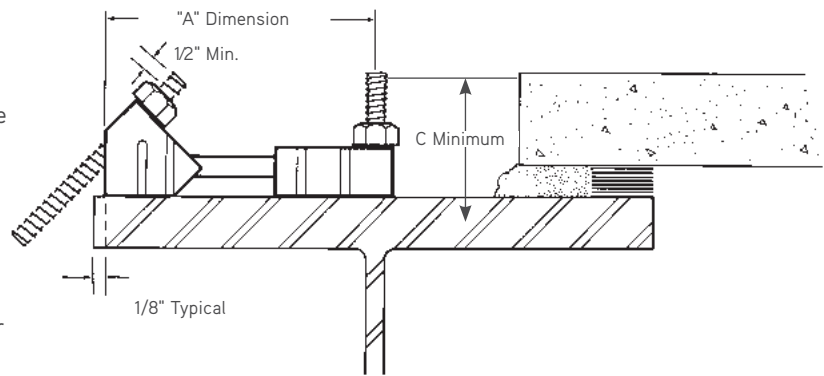
C64 Type 4-A and 4-AN Pres-Steel Half Hanger

This type of hanger works extremely well on bridge rehab projects, bridge widening jobs and other similar projects where only exterior formwork support is required. This hanger can also be used on concrete girders with 6" minimum flange thickness on Type 4-A and 4-AN hangers.

The actual safe working load of these hangers is highly dependent on the size of the headed shear stud, as well as the strength of the weld between the stud and the beam flange. The safe working load is based on the use of a properly welded 3/4" diameter stud with a minimum tensile strength of 55,000 psi.

The Type 4-A and 4-AN use a 1/2" diameter coil bolt. The Type 9-AN is similar with the exception that it uses a 3/4" diameter coil bolt.

C64 type 9-AN comes with 3" x 3" x 1/4" bearing plate beneath the end clip.



To Order:

Specify: (1) quantity, (2) name, (3) "A" dimension.

Example:

100 pcs. C64 Type 4-AN Pres-Steel Half Hanger, "A" = 8".

Type	Maximum Safe Working Load	Bolt Diameter		A Min.	B	C
		45° End	90° End			
4-A	6,000 lbs.	1/2"	1/2"	6"	.440"	2"
4-AN	6,000 lbs.	1/2"	3/4"	6"	.440"	2"

SWL of hanger provides a factor of safety of approximately 2 to 1.

SAFETY NOTE:

The safe working load of the Type 9-A hanger requires 3/4" B13H (Heavy Hex) Coil Nuts.