



EXPAND-Tite® 100 (EXP100) Clay Based Bentonite Hydrophilic Waterstop

Applications:

Cast-In-Place Joints, Foundations, Slabs, Retaining Walls, Storage Tanks, Wall or Floor Penetrations and Precast Concrete Structures of all types. Not intended for use on expansion joints or joints that move. Expand-Tite can be installed within a keyway though a keyway is not required.

Expand-Tite is a flexible concrete construction joint waterstop that is easy to install in non-moving joints. Expand-Tite expands in a controlled fashion when exposed to moisture and will not expand past the point where the hydration process reduces the effectiveness of the waterstop. When installing Expand-Tite the concrete surface needs to be dry and free of contamination. Expand-Tite Primer/Adhesive is recommended for use and is available in one-gallon pails (brush on) or 10.1 oz cartridges.

Note: A minimum of two inches of concrete cover must separate Expand-Tite from the surface of the concrete.

Physical Properties		
Description	Test Method	EXPAND-Tite Waterstop Values
Color:		BLACK
Specific Gravity:	ASTM D71	1.35 ± 5
Hydrocarbon Content:	ASTM D-4	47% min.
Volatile Matter:	ASTM D-6	1% max.
Penetration, cone @ 77°F, 150gm; 5 sec:	ASTM D-217	40 ± 5
Application Temp:		-10°F to 125°F (-22°C to 52°C)
Service Temp. Range:		-30°F to 180°F (-34°C to 82°C)
Hydrostatic Resistance:		100 PSI
Swell Rate		25% in 24 Hours, 100% in 30 Days

EXPAND-Tite 100

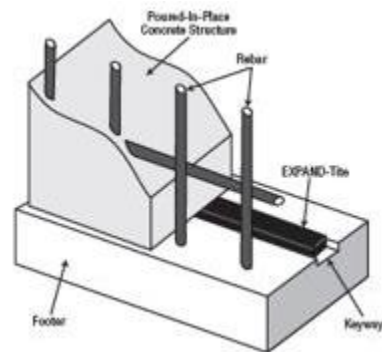
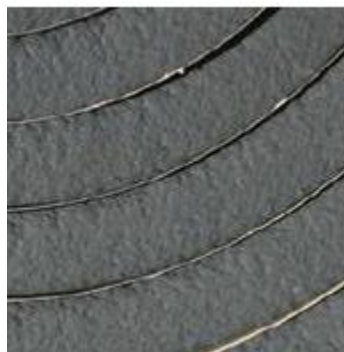
3/4" x 1" x 16'8" (6 rolls/carton)
100 linear ft./carton

EXPAND-Tite Primer

1 Gallon Units

Durajoint® Construction Sealant/Adhesive

10.1 oz. Tube (24 tubes/carton)



American Made Veteran Owned

Waterstop • Forming Accessories • Rebar Supports • Mesh Supports • Prestressed Accessories

DCA CONSTRUCTION PRODUCTS, LLC

10421 Industrial Drive • Garretttsville, OH 44231 • (888) 833-8308 (Toll-Free) or (330) 527-4308 • Fax: (330) 527-2440