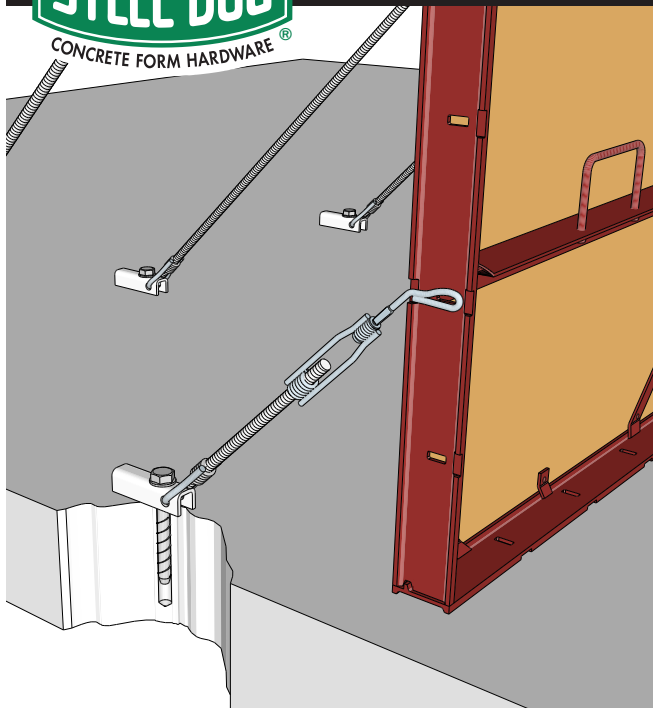


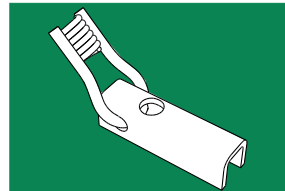


CONCRETE FORM HARDWARE®



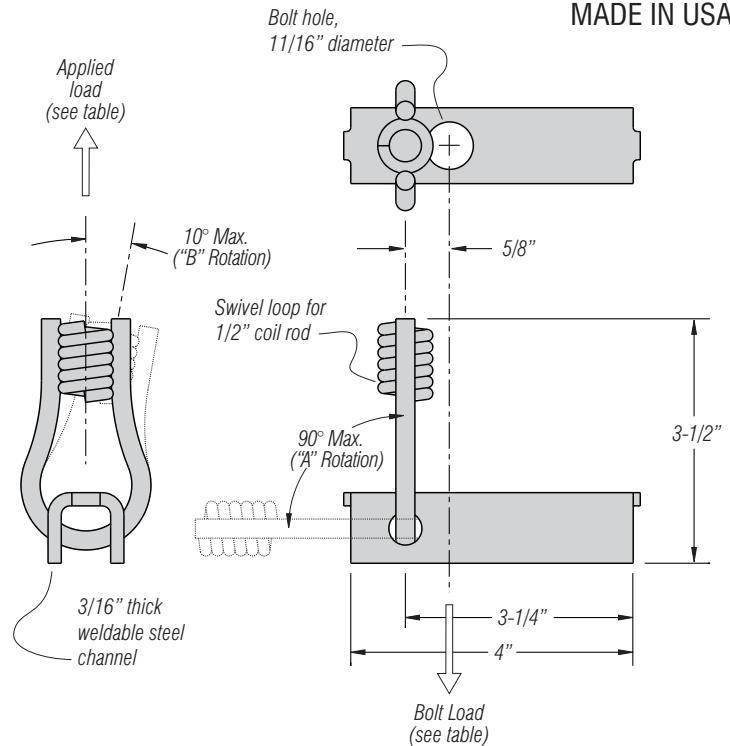
# AnchorBar™

One-Sided Forming Hardware



AB AnchorBar™

MADE IN USA



## Universal, bolt-down attachment bracket

Use the fastener of your choice to anchor formwork to existing structures

The Steel Dog® AnchorBar is a versatile solution for attaching formwork to existing structures.

Use the fastener or mechanical anchor of your choice (up to 5/8" diameter) to connect formwork to existing structures, whether wood, concrete, or steel. Or, weld the body of the AnchorBar to steel structures (sheet piling, H-beams) for an inexpensive weld-on tie point with swivel coil loop.

### APPLICATIONS:

- Brace ties for edge forms on mass pours
- One-sided walls against sheet piling
- One-sided walls against irregular surfaces
- Many other uses

### USE WITH THESE FASTENERS:

- Simpson Titen HD® Screw Anchor
- Powers Wedge-Bolt®
- Drop-in Anchor (with NC or coil thread rod and nut)
- Powers Power-Stud®
- Any fastener up to 5/8" diameter

### MATERIAL:

Body: low carbon steel  
Coil loop: medium carbon steel

### FINISH:

Plain. Other finishes available: contact factory.

Bolt Loading Table Coil Loop in Vertical Position		
Since the swivel coil loop is offset from the bolt hole in the bracket, the load on the bolt will be up to <b>25% higher</b> than the load applied to the coil loop (max. when loop is vertical)	Applied Load	Axial Load on Bolt
	1000	1250
	1500	1875
	2000	2500
	2500	3125
	3000	3750

Product Code	<b>AB-4</b>	<p>*2-to-1 safety factor. Actual SWL in use will depend on means of attachment. For instance, with loop in vertical position with a bolted connection, ultimate pullout strength of bolt would need to be 3000 x 2 x 1.25 = 7500 lbs to meet 3000 SWL applied load.</p>
Description	Bolt-down attachment bracket	
Material	Carbon steel	
Maximum Safe Working Load	3000 lbs*	
Part Weight	0.73 lbs	
Box Quantity	50 pcs	
Box Weight	38 lbs	