

STT-6

Stud Tie

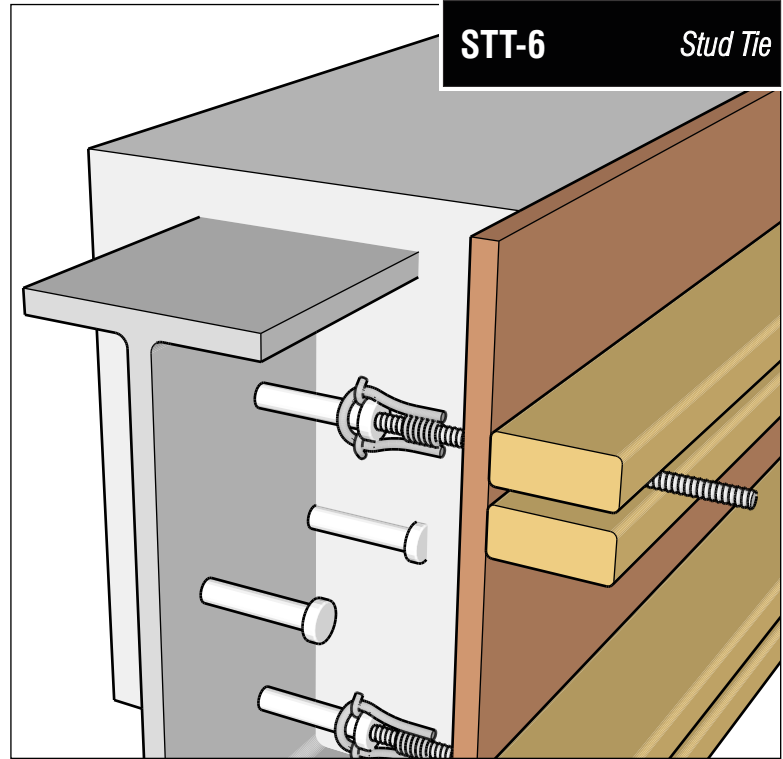
Attach Formwork to Headed Weld Studs

Stud Ties clip on to existing weld studs for connection to 1/2" coil rod

Steel Dog® Stud Ties provide a quick, secure way to attach formwork to existing 3/4" headed weld studs (shear connectors) with 1/2" coil rod. Special coil loop and retainer clip combine to make secure in-line connection of 1/2" coil rod to weld stud.

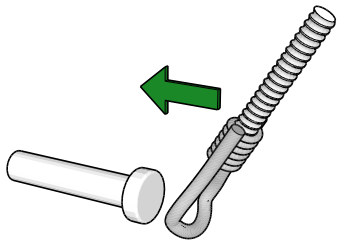
USES:

- Encasing beams, columns
- One-sided forming against sheet piling, H-piles



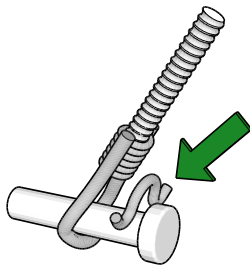
Installation

①



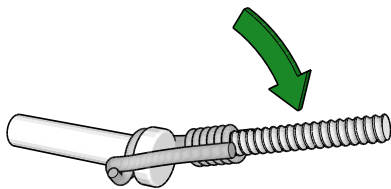
With length of coil rod threaded into coil, slide coil loop over end of stud, with bent end down.

②



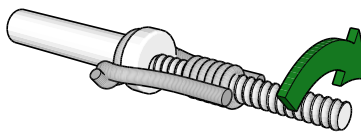
Place retainer clip onto shank of stud, just behind head.

③

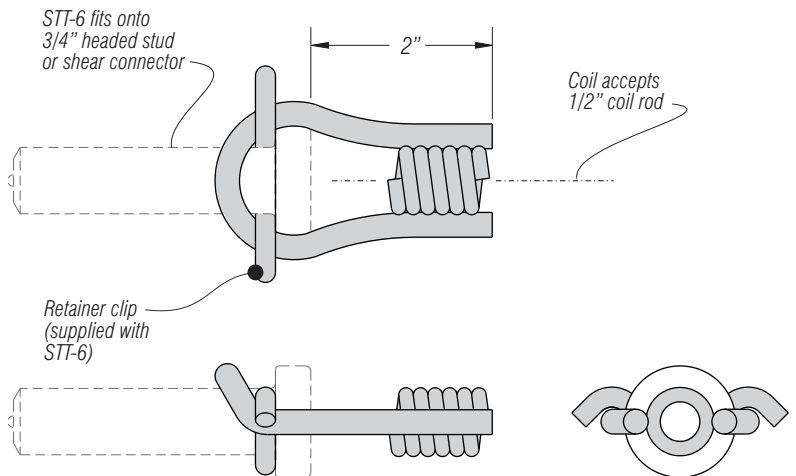


Push down on coil rod until rod is parallel to weld stud shank.

④



Turn coil rod until end bottoms out against head of Stud Tie in place.



Product Code	STT-6	<p>Coil loop</p> <p>Retainer clip</p>
Description	Stud Tie for 3/4" headed studs with retainer clip	
Material	Carbon steel	<p>One STT-6 consists of one bent coil loop and one retainer clip</p> <p>*2-to-1 safety factor.</p>
Maximum Safe Working Load	3000 lbs*	
Mating Threaded Rod	1/2" coil rod	
Fits Headed Weld Stud Size	3/4" shank, 1-1/4" head	
Part Weight	0.27 lbs	
Box Quantity	100 pcs	
Box Weight	28 lbs	